

**Analysis of Mental Health Service Data
For King, Pierce, Spokane, Thurston, Skagit and Kitsap Counties
NW HIDTA/DASA Drug Court Evaluation
Alcohol and Drug Abuse Institute
University of Washington**

December 22, 2000

Issue

In seriously dysfunctional groups, there can be relatively high rates of co-occurrence of substance abuse and mental illness. When it occurs, this combination is likely to represent special treatment problems. The drug courts attempt to screen out offenders with mental illness severe enough that it would interfere with chemical dependency treatment. However, analysis of Mental Health treatment data will give an estimate of the minimum level of relatively serious mental illness in the drug court subgroups, and some indication of the degree to which mental illness may be complicating drug court treatment programs. This is not an evaluation of the *need* for mental health services, but rather of the observed *use* of services.

Conclusions

- Use of Inpatient (IP) mental health services is very low, generally .5% or lower, but higher in some quarters for some groups.
- There are no major differences in IP use across the three larger counties.
- There are no striking differences in IP use rates across drug court outcome groups.
- Outpatient (OP) use rates vary across counties, and are higher than IP, mostly between 2% and 5% across counties, but occasionally in the 8% to 12% range. These rates are still low, but high enough to make mental illness a possible factor in drug court treatment.
- There are no striking differences in OP use rates across drug court outcome groups. This is important, indicating that
 - not all mentally ill offenders are being screened out, and
 - mental illness is not a major factor in determining drug court outcomes.

Methods

Data. Data for these analyses were provided by the Division of Mental Health, DSHS. Data were in the form of total days of IP services provided per quarter in each of state institutions, community hospitals, and Evaluation and Treatment programs (ET), and total hours of services provided in OP community programs per quarter. Institutional and Community Hospital IP days were summed for each quarter, to obtain three types of MH service data: IP days per quarter, ET days per quarter (only offenders in King County were reported to have such services), and OP hours per quarter.

Drug Court Outcome Groups. Subjects are grouped as follows: **Ineligibles** are persons who passed an initial legal screen and were referred to the court, but on closer examination were found to be ineligible on either legal or clinical grounds. **Opt Outs** are persons who met all criteria, and were offered entry to the court, but who personally declined to participate. **Graduates** are

individuals who ever graduated from a drug court. **Did Not Finish (DNF)** are individuals who have ever been admitted to a drug court program and either failed or dropped out. **Actives** are all remaining cases still in the drug court.

Presentation. For each county, two graphs are presented, first for hospital admissions, second for OP services. For King County, a third graph for ET services is provided. In addition, a table of subgroup sample sizes is provided for each subgroup in each county. If there are no subjects in a subgroup for a particular county, that group does not appear in the graph.

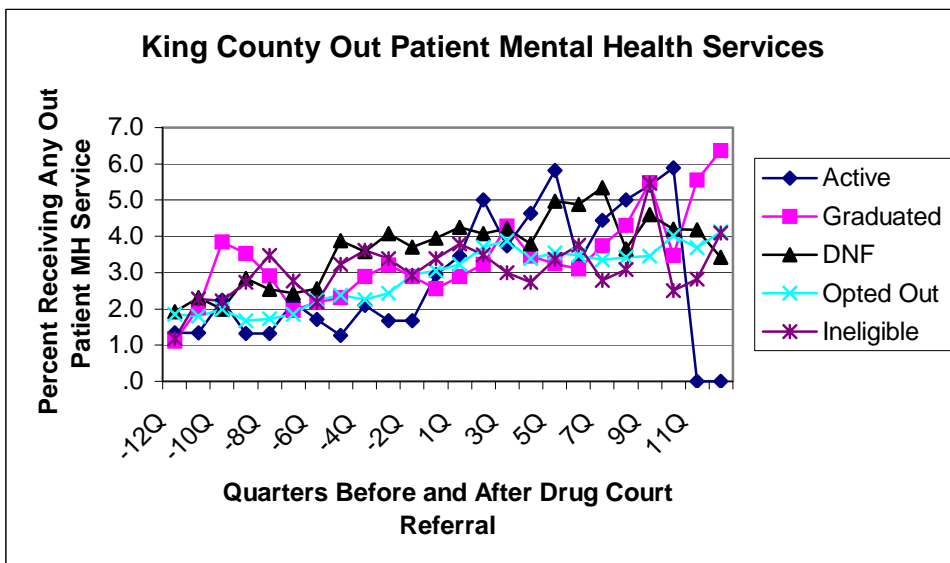
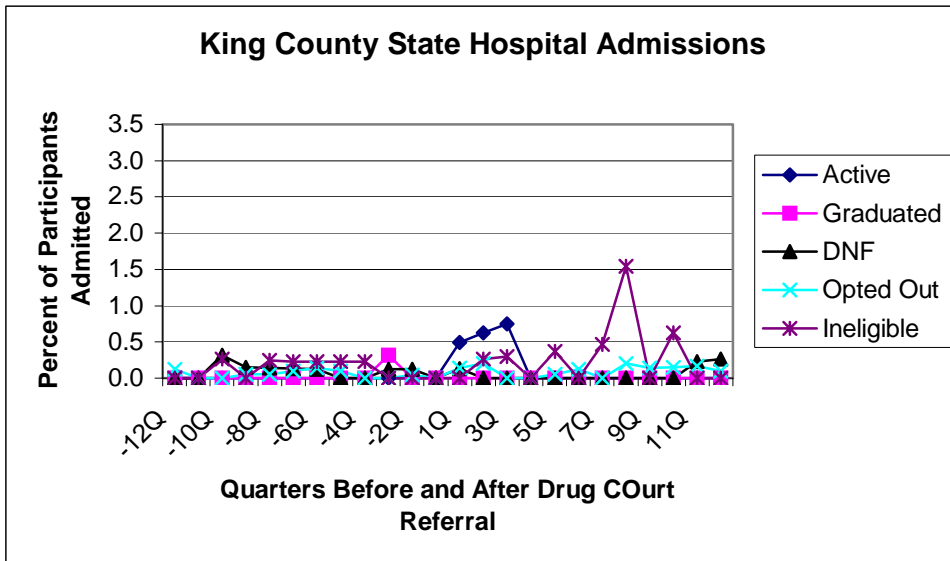
Results

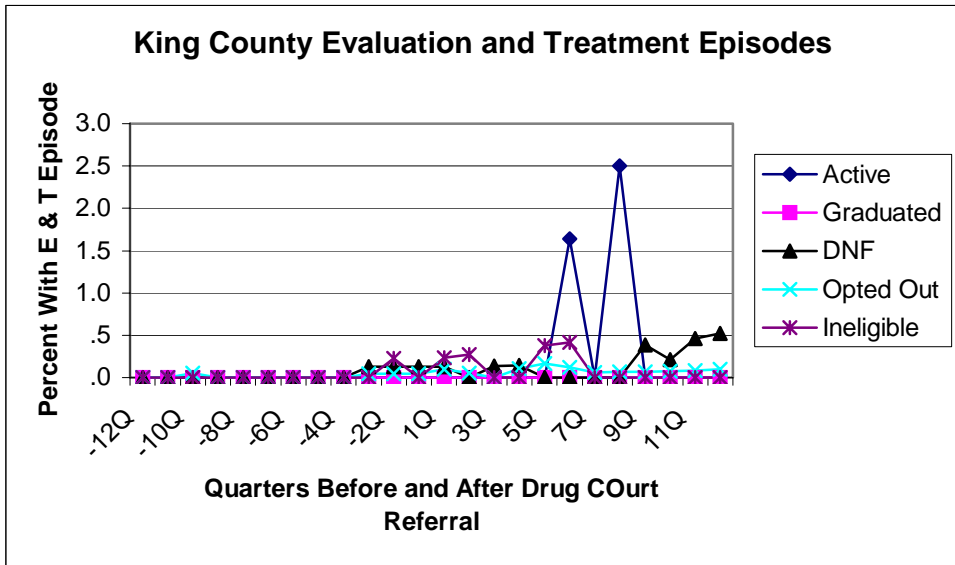
Inpatient (IP) utilization:

- Inpatient utilization rates are very low across all counties, generally between 0 and .5%, although the three smaller counties have zero or nearly zero rates of IP use. In the three larger counties, there are occasional higher rates, but nothing systematic.
- There is little change over time in IP rates, and no clear patterns of differences among drug court outcome groups, except that in two counties (King and Pierce) the Ineligible offenders are on the upper edge of the set of rates.

Outpatient (OP) Utilization:

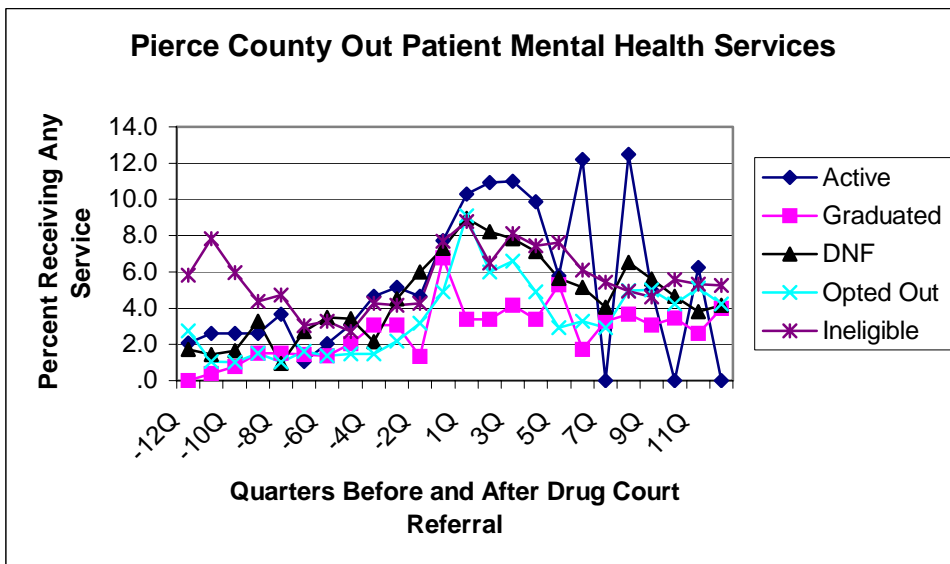
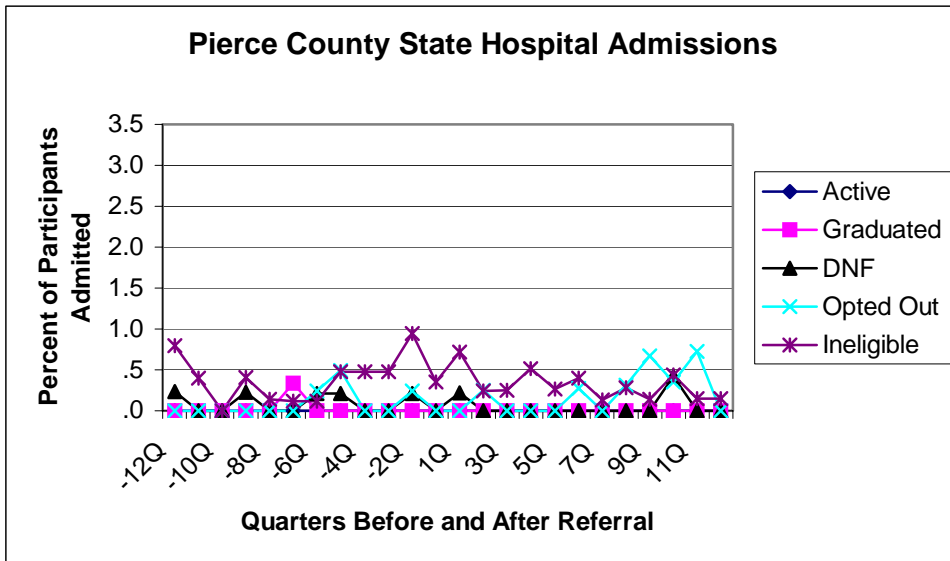
- OP use rates are higher than IP, ranging between 0 and about 12%, but with most values in the large counties falling in the 2 to 5% range. These are not high rates, but they are high enough to indicate that mental illness could be a factor in treatment even in the drug court population.
- Rates vary across counties.
- There are no pronounced patterns across time except in King County, where there is a trend toward higher rates for all groups over time.
- There are no clear patterns for higher or lower rates among the different drug court offender groups. This in itself is interesting, since it suggests (a) that the selection process is not removing all persons with mental illness, and (b) that mental illness is not the major factor in determining successful completion, i.e., even persons with serious mental illness can successfully complete drug court programs. (For example, we do not find the Graduates with the lowest rates of mental health services, nor the ineligibles or DNFs with the highest rates, except for some tendency noted above for Ineligibles to be high on IP use).





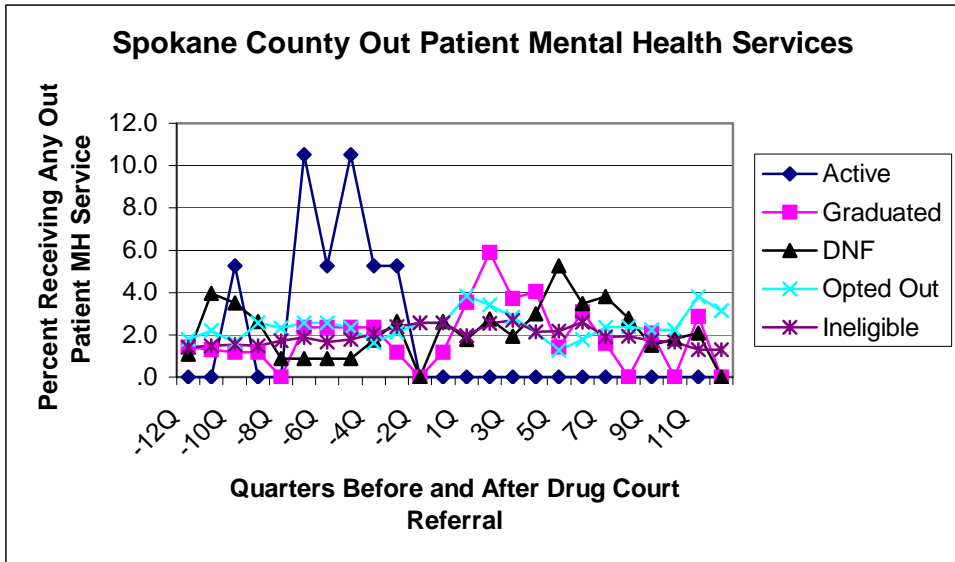
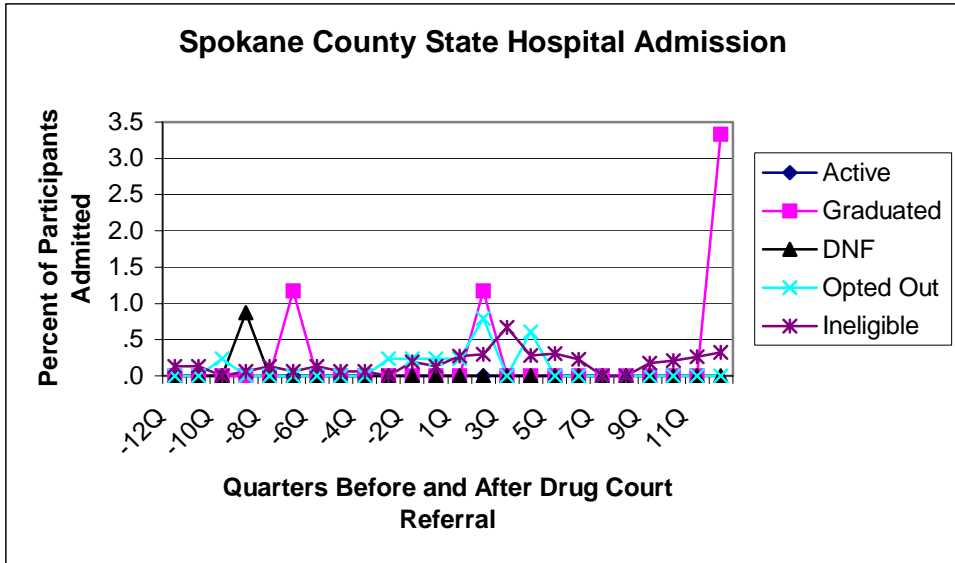
King County
Numbers of Drug Court Study Participants With Data For Each Quarter

	-12Q	-11Q	-10Q	-9Q	-8Q	-7Q	-6Q	-5Q	-4Q	-3Q	-2Q	-1Q	1Q	2Q	3Q	4Q	5Q	6Q	7Q	8Q	9Q	10Q	11Q	12Q
Active	224	228	228	229	233	236	238	238	238	238	238	238	203	160	134	108	86	61	45	40	37	34	26	17
Graduated	208	227	241	256	275	303	312	312	312	312	312	312	312	310	304	290	278	258	241	232	219	202	180	157
DNF	552	598	631	656	706	746	784	784	784	784	784	784	777	760	737	711	685	635	581	548	521	476	431	381
Opted Out	1601	1726	1793	1893	2015	2101	2134	2134	2134	2134	2134	2134	2079	1998	1910	1829	1774	1666	1579	1490	1417	1341	1193	992
Ineligible	359	365	374	397	412	434	443	443	443	443	443	443	422	372	333	293	267	240	216	194	183	160	142	122

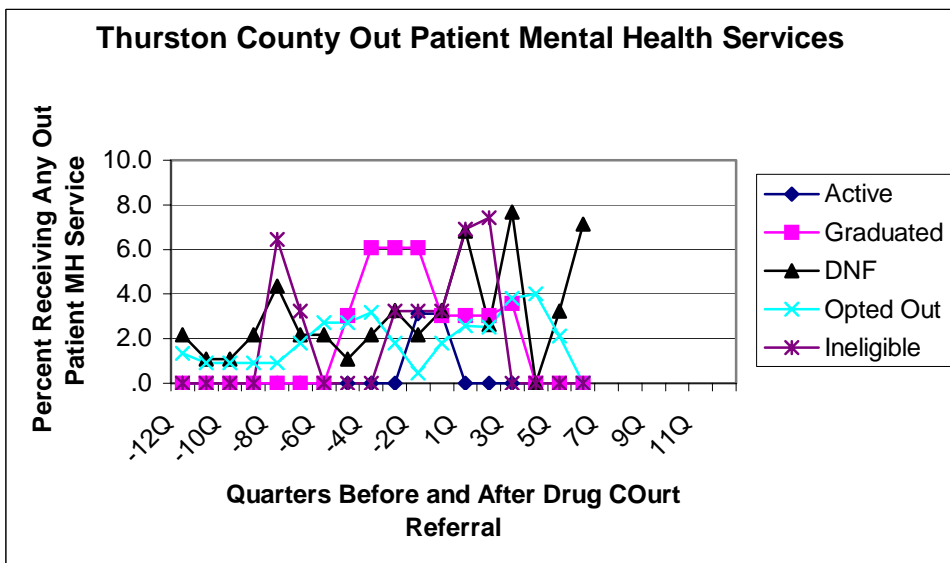
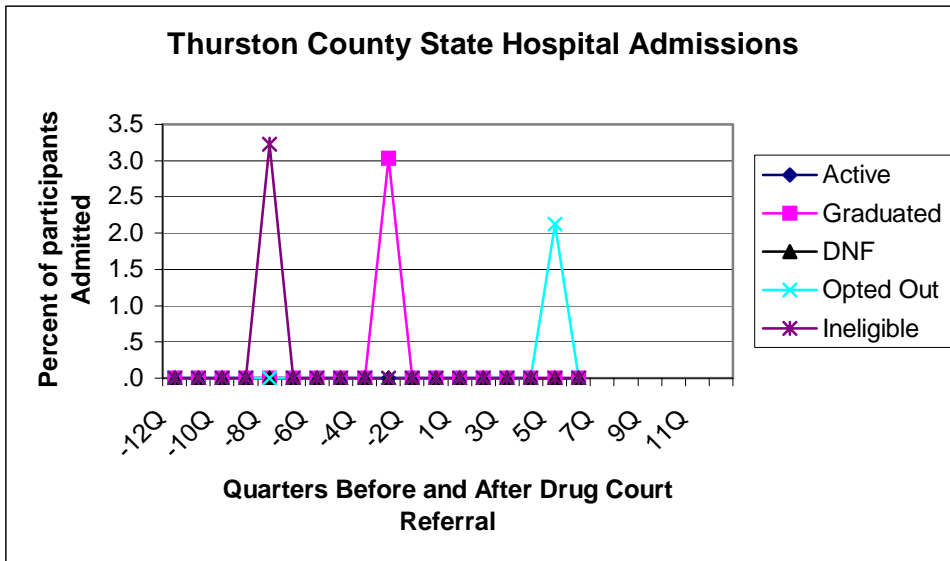


Pierce County
Numbers of Drug Court Study Participants With Data For Each Quarter

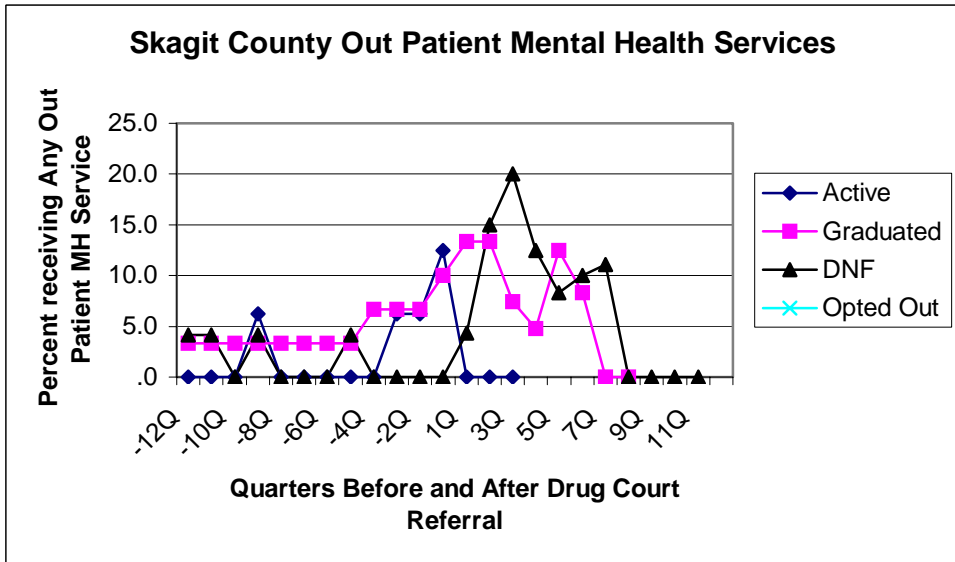
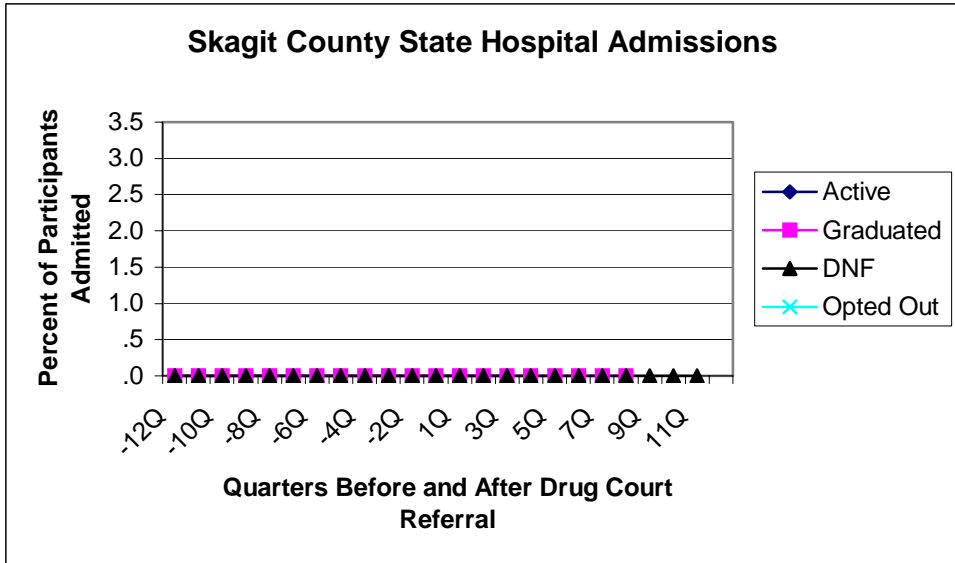
	-12Q	-11Q	-10Q	-9Q	-8Q	-7Q	-6Q	-5Q	-4Q	-3Q	-2Q	-1Q	1Q	2Q	3Q	4Q	5Q	6Q	7Q	8Q	9Q	10Q	11Q	12Q
Active	191	191	191	192	194	194	194	194	194	194	194	194	175	128	100	71	52	41	29	24	20	17	16	9
Graduated	261	262	264	279	291	295	295	295	295	295	295	295	295	295	288	267	246	233	214	190	163	145	115	100
DNF	425	425	426	444	458	466	466	466	466	466	466	466	457	438	422	393	373	349	320	292	268	236	184	144
Opted Out	197	197	198	306	368	409	409	409	409	409	409	409	406	401	395	389	375	364	340	321	299	283	274	259
Ineligible	252	252	254	497	702	844	844	844	844	844	844	844	832	817	800	780	762	752	735	707	692	684	674	665



Spokane County																								
Numbers of Drug Court Study Participants With Data For Each Quarter																								
	-12Q	-11Q	-10Q	-9Q	-8Q	-7Q	-6Q	-5Q	-4Q	-3Q	-2Q	-1Q	1Q	2Q	3Q	4Q	5Q	6Q	7Q	8Q	9Q	10Q	11Q	12Q
Active	19	19	19	19	19	19	19	19	19	19	19	19	19	16	7	3	2	1	1	1	0	0	0	0
Graduated	85	85	85	85	85	85	85	85	85	85	85	85	85	85	81	74	71	65	62	55	48	37	35	30
DNF	114	114	114	114	114	114	114	114	114	114	114	114	112	109	104	100	95	86	79	72	66	55	48	37
Opted Out	428	428	428	428	428	428	428	428	428	428	428	428	416	380	352	329	317	282	256	210	179	135	105	95
Ineligible	1557	1557	1557	1557	1557	1557	1557	1557	1557	1557	1557	1557	1468	1338	1188	1072	968	884	782	672	578	480	382	309

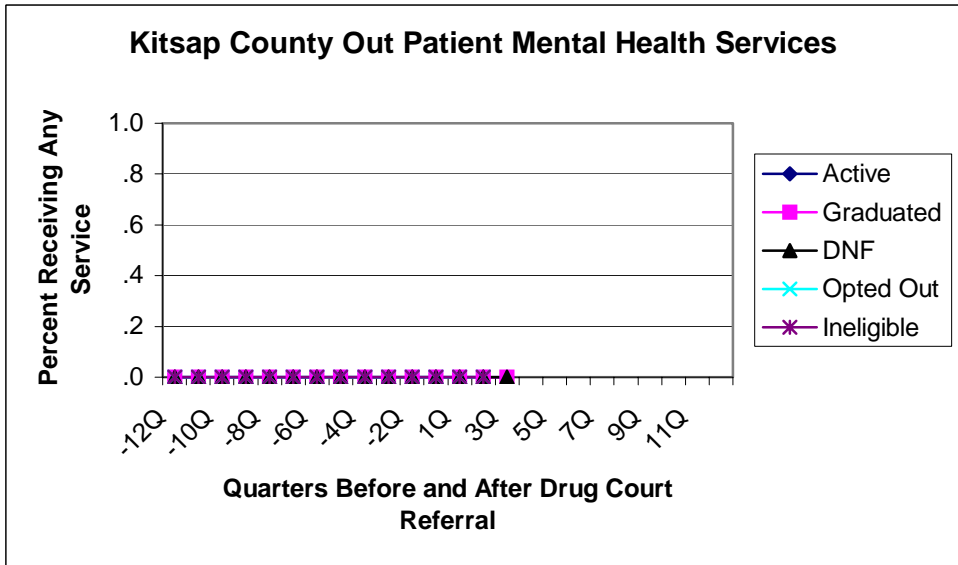
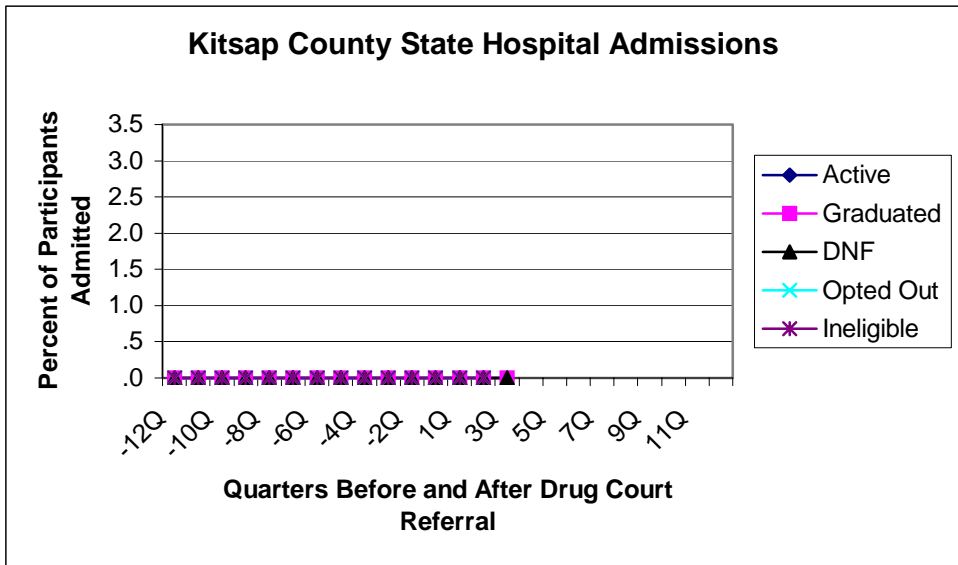


Thurston County Numbers of Drug Court Study Participants With Data For Each Quarter																								
	-12Q	-11Q	-10Q	-9Q	-8Q	-7Q	-6Q	-5Q	-4Q	-3Q	-2Q	-1Q	1Q	2Q	3Q	4Q	5Q	6Q	7Q	8Q	9Q	10Q	11Q	12Q
Active	32	32	32	32	32	32	32	32	32	32	32	32	25	12	6	2	0	0	0	0	0	0	0	0
Graduated	33	33	33	33	33	33	33	33	33	33	33	33	33	33	28	23	13	7	0	0	0	0	0	0
DNF	92	92	92	92	92	92	92	92	92	92	92	92	88	76	65	46	31	14	0	0	0	0	0	0
Opted Out	221	221	221	221	221	221	221	221	221	221	221	221	194	159	105	75	47	17	0	0	0	0	0	0
Ineligible	31	31	31	31	31	31	31	31	31	31	31	31	29	27	24	17	13	10	0	0	0	0	0	0



Skagit County
Numbers of Drug Court Study Participants With Data For Each Quarter

	-12Q	-11Q	-10Q	-9Q	-8Q	-7Q	-6Q	-5Q	-4Q	-3Q	-2Q	-1Q	1Q	2Q	3Q	4Q	5Q	6Q	7Q	8Q	9Q	10Q	11Q	12Q	
Active	16	16	16	16	16	16	16	16	16	16	16	16	12	7	3	0	0	0	0	0	0	0	0	0	0
Graduated	30	30	30	30	30	30	30	30	30	30	30	30	30	30	27	21	16	12	8	5	0	0	0	0	0
DNF	24	24	24	24	24	24	24	24	24	24	24	24	23	20	20	16	12	10	9	5	1	1	1	1	0
Opted Out	0	0	0	0	0	0	0	0	0	0	0	0	0	0	0	0	0	0	0	0	0	0	0	0	0



Kitsap County
Numbers of Drug Court Study Participants With Data For Each Quarter

	-12Q	-11Q	-10Q	-9Q	-8Q	-7Q	-6Q	-5Q	-4Q	-3Q	-2Q	-1Q	1Q	2Q	3Q	4Q	5Q	6Q	7Q	8Q	9Q	10Q	11Q	12Q
Active	18	18	18	18	18	18	18	18	18	18	18	18	14	11	6	0	0	0	0	0	0	0	0	0
Graduated	6	6	6	6	6	6	6	6	6	6	6	6	6	6	3	0	0	0	0	0	0	0	0	0
DNF	11	11	11	11	11	11	11	11	11	11	11	11	9	8	7	0	0	0	0	0	0	0	0	0
Opted Out	1	1	1	1	1	1	1	1	1	1	1	1	1	1	0	0	0	0	0	0	0	0	0	0
Ineligible	1	1	1	1	1	1	1	1	1	1	1	1	1	1	0	0	0	0	0	0	0	0	0	0