

**Report on Medicaid Data Analyses
For King, Pierce, Spokane, Thurston, Skagit and Kitsap Counties
NW HIDTA/DASA Drug Court Evaluation
Alcohol and Drug Abuse Institute
University of Washington**

April 25, 2001

Issue

Medicaid claim data provide a wealth of information about health care utilization patterns and the use of public resources to pay health care costs. Many social programs share an implicit, if not explicit, goal of helping individuals they serve manage their health care to achieve appropriate and cost effective use of public resources. Changes in patterns of Medicaid use have become a common variable in studies of a broad range of intervention programs. While changes in health care utilization are not a stated goal of drug court programs, the examination of utilization patterns is another way to examine the potential broad impacts of participation in DC programs.

Claim data may be considered as process variables that help describe programs, or as outcome variables if changes in utilization patterns are considered as program goals. The choice between process or outcome use of the data is somewhat arbitrary. In this drug court evaluation we might assume that increasing claims for chemical dependency treatment services is a desirable outcome indicating that more people are seeking appropriate treatment, and that Medicaid claims are being used to supplement and therefore extend state and local funding for treatment. Likewise, we might assume that a reduction in claims for emergency room and medical in-patient services is desirable since they are expensive and, in many cases, avoidable, and that there should be a concomitant increase in the regular use of less expensive medical out-patient services. Thus, decreases in ER and in-patient services and increases in out-patient services might be seen as desirable outcome of DC programs.

Conclusions

- The two categories of Medicaid claims that show the highest levels of use are Chemical Dependency Out Patient and general Medical Out Patient treatment. Medical OP has substantially higher use rates than CD OP, suggesting that Medicaid could be used more extensively to support drug court treatment.
- Graduates generally show greater increases in the use of these two categories from pre-referral to post-referral than other groups of subjects.

Methods

Drug Court Outcome Groups. Within each court, subjects are grouped as follows:

- **Ineligibles** are persons who passed an initial legal screen and were referred to the court, but on closer examination were found to be ineligible on either legal or clinical grounds.
- **Opt Outs** are persons who met all criteria, and were offered entry to the court, but who personally declined to participate.
- **Graduates** are individuals who graduated from a drug court.
- **Did Not Finish (DNFs)** are individuals who were admitted to a drug court program and either failed or dropped out.
- **Actives** are all remaining cases still in the drug court. They are not included in these analyses.

Data. Data were provided by the State Medical Aid Administration (MAA), for the period of January, 1993 to November, 2000. Because different subjects entered and left the program at different times, subjects vary on how much time they have pre and post referral (subjects entering late in the study will usually have full data pre, but truncated data post referral, and vice versa for those entering early). We provided MAA with subject names, dates of birth and social security numbers, and the matches were made by MAA. If no match was identified, we assumed this meant that person had not made Medicaid claims. Subjects with no match were assigned zeros as data for the duration of their time in the study, thus all subjects were included for the full time they were in the study.

The reimbursement requests were broken into categories (described below), and for each category and for the total, we derived two scores, one a yes/no for whether a subject made claims in each quarter in which they were in the study, the other a dollar amount of reimbursements made in each quarter. These are the values used in the graphs (pages 13-36). The "percent receiving" graphs show the percent of each group that received that category of reimbursement in each quarter. The "average reimbursement" graphs show the mean amount of reimbursement per group member (all group members included) for each category for each quarter. Tables showing the values used in the graphs are provided on pages 37-48 for percentages, and pages 49-60 for mean reimbursements.

The percentage of subjects in each group that made at least one claim in *any* of the quarters during the pre-referral period and during the post-referral period are reported in the table on page 8.

For the statistical analyses we aggregated these two variables for each subject. For the proportion making claims, the value used for each subject was the proportion of quarters in which a claim was made (the number of quarters in which a claim was made divided by the number of quarters for which the subject had data), calculated separately for the pre and post-referral periods. Similarly, for each person the mean reimbursement per quarter was determined separately for pre and post-referral periods (the mean per quarter was used rather than the total because subjects had different periods of time before and after referral). The mean values for the pre-referral and post-referral periods by Medicaid categories for subjects combined in each county are reported in the table on page 8.

Medicaid reimbursement records were broken into 8 categories of service, plus total reimbursement (the sum of all eight categories). The service categories are:

- Chemical Dependency
- Emergency/Crisis
- Medical In Patient
- Medical Out Patient
- Detoxification
- Mental Health
- Nursing home/Congregate care
- Psychiatric In Patient

The last four categories occurred so infrequently that their statistical analyses were not meaningful, nor are graphs included for them. They are included in the statistical analyses as part of the overall total Medicaid utilization and charges.

The three most recent programs, Thurston, Skagit and Kitsap counties, all had relatively small sample sizes, low Medicaid usage percentages, and/or such short post-referral follow-up periods that their data are generally not analyzable statistically. Tables are provided of the sample sizes by quarters, and the percentages and charges appear in tables and are also graphed. Data from these counties *are* included in those analyses that combine all subjects across the six counties.

In the statistical analyses¹ pre-existing differences among the groups on the variables are controlled by using change scores, that is, the pre-referral value is subtracted from the post-referral value to determine how much change occurred between the two time periods. A positive score means that the post score was higher (larger

¹ Multivariate Analyses of Variance.

percentage of use, or higher mean reimbursements), and negative score that the post score was lower. The means by counties and by offender outcome group for the pre- and post-referral scores and for the difference scores for the four major Medicaid claim categories are reported in the tables on pages 9-12.

Graphical Results

- Chemical Dependency Services. The quarterly percents of offenders receiving Medicaid reimbursement for CD services is generally between 0% - 4% before drug court referral. Post-referral percentages for Graduates and DNFs rise in King to 3% -6%, \pm 4% in Pierce (only Graduates increase), and 6% - 10% in Spokane counties. Pierce and Spokane percentages drop after several quarters to previous levels.
- Mean quarterly reimbursements for CD service pre-referral are between \$0 - \$18. Post-referral the means for Graduates and DNFs (Graduates only in Pierce) increase substantially in King (up to \$15 - \$30) and Spokane (\$30 - \$90) counties, and somewhat less in Pierce (\$10-25). In Pierce and Spokane these amounts decline over time more than in King.
- Emergency/Crisis Services. Initial quarterly utilization percentages for Emergency services are similar for groups and counties, mostly 0% - 4% (4% -8% for DNFs in King), with few major changes pre to post.
- Quarterly mean costs for Emergency services are highly erratic, ranging between \$0 - \$100 (highest in King, lower and similar in Pierce and Spokane) with occasional higher spikes, and not much difference pre vs. post-referral.
- Medical In Patient Services. Quarterly use percentages for Medical IP are low pre and post: 0% - 3% in King and 0% - 2% in Pierce and Spokane. These costs are also erratic, mostly ranging between \$0 and \$100, and similar pre and post-referral and across counties, although somewhat lower in Pierce.
- Medical Out Patient Services. These have the highest utilization percentages of the Medicaid categories. Quarterly percentages across counties are largely in the 10% to 19% range pre court referral. Post quarterly referral percentages for Graduates and DNFs (Graduates only in Pierce) increase in all three counties, rising to the 15% to 26% range. In Pierce County these percentages taper off over time.
- Costs for medical OP are also the highest of any category, ranging between about \$40 to \$100 per person per quarter pre-referral. Post-referral there is a tendency for quarterly means for one or more groups per county to increase. In King, Graduates, DNFs and Opt Outs all increase into the \$80 - \$120 range; in Pierce Graduates increase to \$100 - \$160, and in Spokane Graduates, DNFs and Opt Outs are increase to approximately \$75 to \$175.

Overall Findings.

- In the two areas of greatest use of Medicaid services, CD and Medical OP services, the Graduates tend to be the highest utilizers, with the DNF group generally second.
- DNFs are the highest utilizers of Emergency and Medical IP services.
- In the post period, the utilization percentages for Medical OP are considerably higher than for CD services, suggesting that there is a potential additional resource for supporting drug court CD treatment for a sizable group, up to as many as 20%, of court participants.

Statistical Results.

In the analyses below, all eight categories of Medicaid reimbursement and the totals were analyzed separately for each of the six counties and for all subjects combined. For the reasons outlined above, only results for King, Pierce and Spokane counties and all subjects combined (from all six counties), and for four categories of Medicaid and total Medicaid, are reported. For each category of Medicaid, we analyzed two

scores for each person for the pre-referral and post-referral periods, first, the percent of quarters in which the person received Medicaid benefits, and second, the mean amount of reimbursements made per quarter.

The logic of a statistical analysis is to determine first whether there is an overall statistically significant effect. For example, in King County, among the four outcome groups and for the data from the Medicaid categories, is there a significant difference among two or more groups on some combination of the variables? If overall significance is found, it is legitimate to examine the results in more detail to identify which groups are different from each other, and the variables on which they differ.

The significance levels for the statistical tests are reported in Table 1 for each of three counties and for all the subjects combined from all six counties (the groupings are identified in column 1), for total reimbursement across all 8 categories, and for the four Medicaid categories with sufficient activity to analyze (the headings in columns 4 to 8). Table 1 shows only the levels of statistical significance for the various tests run on these data. Only "statistically significant" results are reported, that is, results where probabilities were smaller than .05². Empty cells represent "non-significant" findings. Column 2 shows that for each group, two separate sets of analyses were run, one for the percent of quarters in which the offender received Medicaid benefits, the other for the mean amount of benefit paid per quarter.

Note that these analyses were performed on *change scores*, that is, the amount of increase or decrease between pre and post-referral.

Question 1: Overall, are there some statistically significant differences among the groups on some combination of the variables?

Yes, there are differences among the groups.

Column 3, headed "Overall Test of Significance" shows the results of the test for whether there were any differences among any of the groups on one or more of the variables being tested. The probabilities for these tests show that there are consistent overall significant differences among the groups, so the answer to the first question is yes.

Question 2: Given that there are some statistically significant differences among groups, on which variables do the groups differ?

The groups are clearly different on changes in CD and Medical OP services. Not surprisingly, total expenditures are also significant in two counties and also overall.

In Table 1, columns 4 through 7 show the significance levels for each of the four Medicaid categories analyzed, and column 8 the significance level for total Medicaid claims combined across all 8 Medicaid categories. These results show that there are fairly consistent significant differences in the amount of change for the Chemical Dependency and Medical OP treatment categories, but few significant results for Emergency and Medical IP treatment. On this basis, then, most of the differences in changes among groups appear to be based on differences on CD treatment and Medical OP treatment

A related question is whether there are differences in results for the two types of measures, changes in percentages of quarters in which reimbursements were received, and mean amounts reimbursed. Here the answer appears to be that percentages are more likely to show group differences than are amounts of reimbursement.

² Two values larger than .05 are listed in parentheses in the table, both for Pierce County. These "trends" toward significance are included because the overall test for Pierce is significant

Table 1
Levels of Significance for Statistical Tests

Counties (1)	Variable being analyzed (2)	Overall Test of Significance (3)	Category of Medicaid Claims				
			CD (4)	Emerg (5)	Med IP (6)	Med OP (7)	Total (8)
King	Percent	.000	.008			.000	.000
	Amount						
Pierce	Percent	.008	(.06)			(.07)	
	Amount	.027				.010	
Spokane	Percent	.000	.000		.025	.013	.009
	Amount	.000	.000				
Counties Combined	Percent	.000	.000	.016		.000	.000
	Amount	.000	.000		.030	.000	

Question 3: Given that there are differences among groups, which groups are different from each other in the amount of change?

There are three patterns of significant differences among groups.

- First, as would be expected because of their involvement in treatment during drug court, Graduates show significantly larger increases in percent reimbursed for CD services in King and Pierce counties and for all subjects combined. In Spokane County the Graduates and DNFs both show more increase than the other groups for both the percentage with reimbursements and the mean reimbursement. When all subjects are combined, the Graduates also have a larger increase than the other groups on mean reimbursement.
- Second, in Emergency services the only significant difference among groups is that there is a greater increase in the percent of DNFs receiving reimbursement when all subjects are combined. Similarly in Spokane for Medical IP, the DNFs have significantly higher increase in the percentage receiving reimbursement than the Graduates. While not expected, these findings are consistent with the idea that DNFs experience some difficulties possibly related to their leaving the drug court programs.
- Third, for Medical OP services, the Graduates have a pattern of larger increases in percentages and/or amounts of reimbursement than some of the other groups. In King County and for all subjects combined, the increase in percentage is significantly larger than for any other group, and in Spokane it is higher than the Opt Out group. The increase in mean amount of reimbursement is higher for Graduates than for DNFs and Opt Outs in Pierce County and higher than Opt Outs and Ineligibles for all subjects combined.
- The findings by counties for total Medicaid reimbursement parallel those above: In percentages with reimbursement, but not in amounts, the Graduates increase more than the other groups in King County and for all subjects combined. In both these cases the DNFs also have significantly larger increases than the Ineligibles. In Spokane County the Graduates are significantly higher than the Opt Outs.

Overall, in the two areas of greatest use of Medicaid services, the Graduates tend to be the highest utilizers, with the DNFs generally second.

Conclusions

- Percentages with claims and reimbursement amounts are highest for Medical OP services. *Percentages* are next highest for CD services, but mean *amounts* of reimbursement are second highest for Emergency services.
- Use percentages for Medical OP are substantially higher than for CD, suggesting a possible underused source of drug court treatment dollars.
- Pre-referral to drug court the quarterly percentages of utilization of Medicaid reimbursements tend to be between 0% and 2% for most categories. Use rates for CD and Emergency services are generally higher, up to 4%, and rates for Medical OP higher yet, ranging between about 10% and 19%.
- Post drug court referral quarterly percentages show little change from pre rates, except Graduates and DNFs show increased percentages of CD service reimbursements (3% - 6% in King and Pierce, and 6% - 10% in Spokane) and Medical OP reimbursement percentages (between 15% and 26%).
- Mean quarterly reimbursements vary widely across counties and especially across Medicaid categories.
 - Pre-referral CD reimbursements range between \$0 to \$20, post-referral \$15 - \$30 in King and Pierce, and \$30 - \$90 in Spokane.
 - Reimbursement for Emergency and Medical IP services are highly variable in all three counties, tending to range between \$0 and \$100, with some higher values, in all three counties, pre and post-referral.
 - Medical OP pre-referral reimbursement group means are largely between \$40 and \$100, while post-referral levels are between \$50 - \$150.
- Graduates and sometimes DNFs show the largest pre to post-referral increases in CD and Medical OP. DNFs tend to be highest post-referral on Emergency and Medical IP.

List of Tables and Graphs

Percents of Subjects Making Medicaid Claims

And Mean Amounts of Reimbursement 8-12

 Groups Combined within Counties.....8

 Chemical Dependency Treatment.....9

 Emergency/Crisis Treatment..... 10

 Medical In Patient Treatment 11

 Medical Out Patient Treatment..... 12

Graphs of Mean Reimbursement Amounts by Quarter

And the Percentages of Subjects Making Claims by Quarter

Chemical Dependency Treatment for Six Counties 13-18

Emergency/Crisis Treatment for Six Counties 19-24

Medical In Patient Treatment for Six Counties.....25-30

Medical Out Patient Treatment for Six Counties.....31-36

Tables of Quarterly Data Values Used in the Graphs

Quarterly Group Percentages Making Claims for Six Counties37-48

Quarterly Group Mean Reimbursements for Six Counties.....49-60

Quarterly Group Total Reimbursements for Six Counties.....61-72

Numbers of Subjects in Each Subject Group for Each Quarter

For Six Counties73-74

For all Offenders in Each County
Percent of Subjects with One or More Medicaid Claim
And Mean Amount Reimbursed Per Quarter
By Categories of Medicaid Reimbursement

Counties	All Offenders Combined	Per Cent of All Offenders with Any Reimbursement in Average Quarter			Mean Dollar Amounts Reimbursed Per Person per Quarter		
		Pre Referral	Post Referral	Difference	Pre Referral	Post Referral	Difference
King	Any Charge	13.6%	16.1%	2.5%	170	246	76
	CD OP Tx	1.6%	2.4%	0.8%	7	11	4
	Emergency	4.0%	4.7%	0.7%	52	64	12
	Medical IP	1.6%	2.0%	0.4%	28	39	11
	Medical OP	12.9%	15.3% ³	2.3%	61	97	35
Pierce	Any Charge	10.9%	13.7%	2.8%	111	199	88
	CD OP Tx	1.3%	2.0%	0.7%	5	9	4
	Emergency	2.5%	3.3%	0.8%	29	52	22
	Medical IP	0.7%	1.0%	0.3%	15	38	24
	Medical OP	10.4%	13.1%	2.6%		49	34
Spokane	Any Charge	14.1%	12.9%	-1.2%	114	173	59
	CD OP Tx	1.1%	1.3%	0.2%	4	7	3
	Emergency	2.3%	2.8%	0.5%	22	58	36
	Medical IP	0.6%	0.7%	0.1%	14	20	7
	Medical OP	13.6%	12.2%	-1.5%	66	76	10
Thurston	Any Charge	14.4%	13.0%	-1.3%	124	143	18
	CD OP Tx	1.5%	1.4%	-0.1%	5	4	-1
	Emergency	2.1%	2.7%	0.6%	12	46	35
	Medical IP	0.4%	0.8%	0.4%	26	19	-8
	Medical OP	13.8%	12.4%	-1.4%	66	66	1
Skagit	Any Charge	25.3%	32.6%	7.3%	338	375	37
	CD OP Tx	5.8%	13.6%	7.9%	24	101	77
	Emergency	7.1%	8.7%	1.5%	83	61	-22
	Medical IP	2.1%	1.9%	-0.2%	24	34	10
	Medical OP	24.1%	30.8%	6.7%	171	176	6
Kitsap	Any Charge	17.0%	19.5%	2.6%	152	99	-53
	CD OP Tx	3.7%	2.5%	-1.2%	23	8	-15
	Emergency	0.3%	2.6%	2.3%	1	4	3
	Medical IP	0.3%	0.5%	0.2%	23	1	-23
	Medical OP	17.0%	19.0%	2.0%	105	84	-21

Chemical Dependency Treatment:
 For Each Subgroup in Each County
 Mean Percent Receiving Any Reimbursement
 And Mean Amount of Reimbursement
 Per Person Per Quarter, Pre- and Post-Referral

Counties	All Medicaid Categories Combined	Out Patient Chemical Dependency Treatment Reimbursement					
		Average Per Cent of Offender Group with Any Reimbursement in Quarter			Mean Dollar Amounts Reimbursed Per Person per Quarter		
		Pre Referral	Post Referral	Difference	Pre Referral	Post Referral	Difference
King	All Offenders	1.6%	2.4%	0.8%	7	11	4
	Graduates	1.9%	4.6%	2.7%	10	24	15
	Did Not Finish	3.1%	3.8%	0.7%	14	18	4
	Opt Out	1.1%	1.7%	0.6%	5	8	3
	Ineligible	1.3%	1.8%	0.5%	5	10	5
Pierce	All Offenders	1.3%	2.0%	0.7%	5	9	4
	Graduates	1.2%	3.0%	1.8%	6	12	6
	Did Not Finish	1.9%	1.7%	-0.2%	8	7	-1
	Opt Out	1.3%	1.9%	0.5%	5	9	5
	Ineligible	1.0%	2.0%	1.0%	4	9	5
Spokane	All Offenders	1.1%	1.3%	0.2%	4	7	3
	Graduates	2.5%	5.7%	3.2%	8	38	31
	Did Not Finish	1.6%	6.6%	5.0%	4	44	40
	Opt Out	1.7%	1.2%	-0.5%	7	5	-3
	Ineligible	0.8%	0.8%	0.0%	3	4	1
Thurston	All Offenders	1.5%	1.4%	-0.1%	5	4	-1
	Graduates	0.8%	0.0%	-0.8%	1	0	-1
	Did Not Finish	1.5%	1.1%	-0.4%	5	4	0
	Opt Out	1.7%	1.7%	-0.1%	7	5	-1
	Ineligible	0.7%	1.6%	0.9%	1	2	1
Skagit	All Offenders	5.8%	13.6%	7.9%	24	101	77
	Graduates	4.4%	17.7%	13.2%	12	129	117
	Did Not Finish	7.6%	9.2%	1.6%	39	70	31
	Opt Out	0.0%	0.0%	0.0%	0	0	0
	Ineligible						
Kitsap	All Offenders	3.7%	2.5%	-1.2%	23	8	-15
	Graduates	0.0%	0.0%	0.0%	0	0	0
	Did Not Finish	6.3%	4.2%	-2.0%	39	13	-26
	Opt Out	0.0%	0.0%	0.0%	0	0	0
	Ineligible	0.0%	0.0%	0.0%	0	0	0

Emergency/Crisis Treatment:
 For Each Subgroup in Each County
 Mean Percent Receiving Any Reimbursement
 And Mean Amount of Reimbursement
 Per Person Per Quarter, Pre- and Post-Referral

Counties	All Medicaid Categories Combined	Emergency/Crisis Treatment Reimbursement					
		Average Per Cent of Offender Group with Any Reimbursement in Quarter			Mean Dollar Amounts Reimbursed Per Person per Quarter		
		Pre Referral	Post Referral	Difference	Pre Referral	Post Referral	Difference
King	All Offenders	4.0%	4.7%	0.7%	52	64	12
	Graduates	3.2%	3.1%	-0.1%	56	59	3
	Did Not Finish	5.8%	6.7%	0.9%	70	81	10
	Opt Out	3.4%	4.3%	0.9%	41	59	18
	Ineligible	4.2%	4.2%	0.1%	72	68	-4
Pierce	All Offenders	2.5%	3.3%	0.8%	29	52	22
	Graduates	1.8%	2.0%	0.2%	19	18	-1
	Did Not Finish	1.9%	3.5%	1.6%	28	58	29
	Opt Out	2.4%	3.4%	1.0%	25	44	19
	Ineligible	3.1%	3.5%	0.4%	35	63	28
Spokane	All Offenders	2.3%	2.8%	0.5%	22	58	36
	Graduates	2.5%	1.7%	-0.8%	43	11	-32
	Did Not Finish	2.0%	2.9%	0.8%	19	22	2
	Opt Out	2.9%	3.2%	0.3%	21	48	27
	Ineligible	2.2%	2.8%	0.6%	22	65	43
Thurston	All Offenders	2.1%	2.7%	0.6%	12	46	35
	Graduates	1.3%	0.0%	-1.3%	4	0	-4
	Did Not Finish	3.2%	4.8%	1.6%	14	33	19
	Opt Out	1.5%	2.5%	0.9%	9	62	53
	Ineligible	4.3%	1.7%	-2.6%	29	2	-27
Skagit	All Offenders	7.1%	8.7%	1.5%	83	61	-22
	Graduates	6.9%	8.5%	1.5%	108	12	-96
	Did Not Finish	7.6%	9.3%	1.6%	56	126	70
	Opt Out	0.0%	0.0%	0.0%	0	0	0
	Ineligible						
Kitsap	All Offenders	0.3%	2.6%	2.3%	1	4	3
	Graduates	0.0%	2.4%	2.4%	0	2	2
	Did Not Finish	0.5%	3.6%	3.1%	1	6	5
	Opt Out	0.0%	0.0%	0.0%	0	0	0
	Ineligible	0.0%	0.0%	0.0%	0	0	0

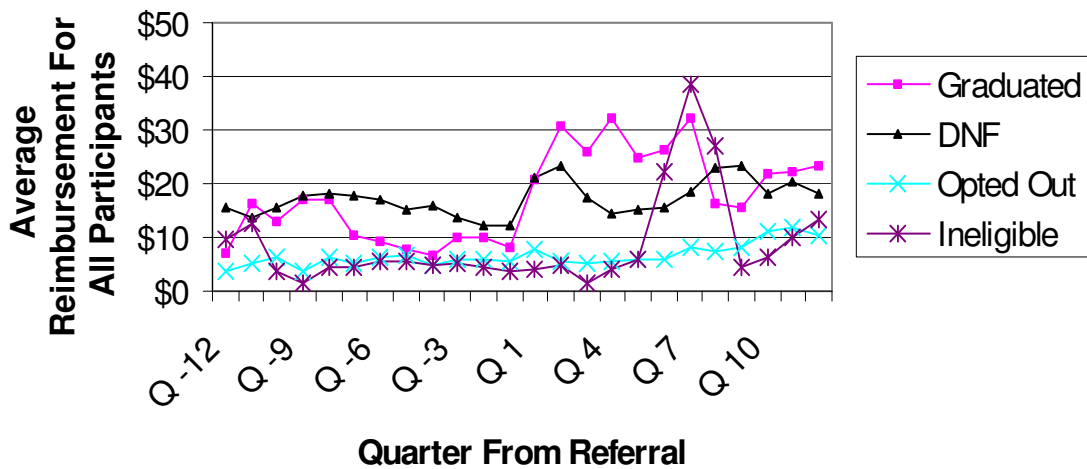
General Medical In Patient Treatment:
 For Each Subgroup in Each County
 Mean Percent Receiving Any Reimbursement
 And Mean Amount of Reimbursement
 Per Person Per Quarter, Pre- and Post-Referral

Counties	All Medicaid Categories Combined	General Medical In Patient Treatment Reimbursement					
		Average Per Cent of Offender Group with Any Reimbursement in Quarter			Mean Dollar Amounts Reimbursed Per Person per Quarter		
		Pre Referral	Post Referral	Difference	Pre Referral	Post Referral	Difference
King	All Offenders	1.6%	2.0%	0.4%	28	39	11
	Graduates	1.3%	1.7%	0.4%	28	20	-8
	Did Not Finish	2.2%	2.8%	0.6%	27	69	42
	Opt Out	1.4%	1.8%	0.4%	28	31	3
	Ineligible	1.7%	1.7%	0.0%	33	42	9
Pierce	All Offenders	0.7%	1.0%	0.3%	15	38	24
	Graduates	0.7%	0.7%	0.0%	14	7	-6
	Did Not Finish	0.7%	0.7%	0.0%	11	19	8
	Opt Out	0.6%	1.1%	0.5%	12	18	6
	Ineligible	0.7%	1.2%	0.4%	18	69	51
Spokane	All Offenders	0.6%	0.7%	0.1%	14	20	7
	Graduates	1.0%	0.2%	-0.8%	29	4	-25
	Did Not Finish	0.6%	1.5%	0.9%	14	30	16
	Opt Out	0.8%	0.9%	0.1%	28	39	11
	Ineligible	0.5%	0.6%	0.1%	9	16	7
Thurston	All Offenders	0.4%	0.8%	0.4%	26	19	-8
	Graduates	0.0%	0.4%	0.4%	0	11	11
	Did Not Finish	0.4%	0.9%	0.4%	6	40	34
	Opt Out	0.4%	0.9%	0.5%	40	14	-25
	Ineligible	1.4%	0.5%	-0.9%	6	3	-3
Skagit	All Offenders	2.1%	1.9%	-0.2%	24	34	10
	Graduates	2.8%	1.8%	-1.0%	43	29	-14
	Did Not Finish	1.4%	2.2%	0.8%	2	42	40
	Opt Out	0.0%	0.0%	0.0%	0	0	0
	Ineligible						
Kitsap	All Offenders	0.3%	0.5%	0.2%	23	1	-23
	Graduates	0.0%	0.0%	0.0%	0	0	0
	Did Not Finish	0.5%	0.9%	0.4%	39	1	-38
	Opt Out	0.0%	0.0%	0.0%	0	0	0
	Ineligible	0.0%	0.0%	0.0%	0	0	0

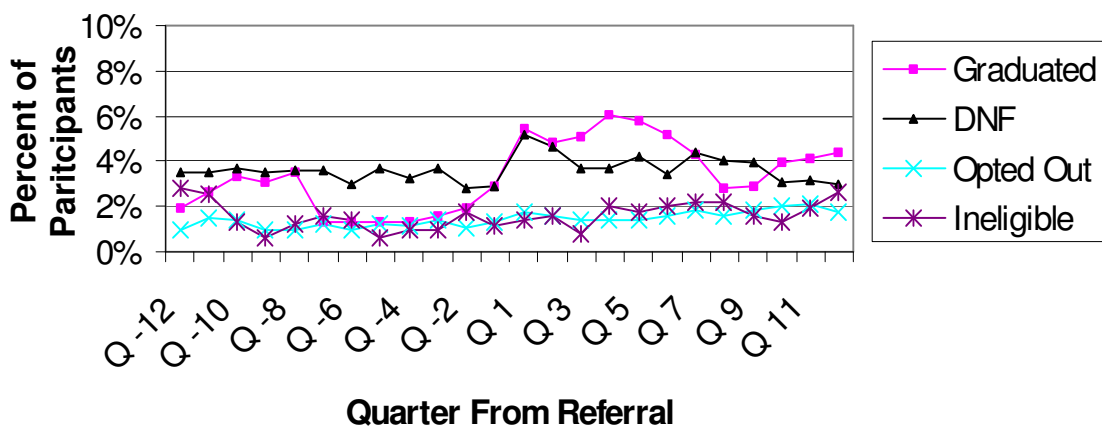
General Medical Out Patient Treatment:
 For Each Subgroup in Each County
 Mean Percent Receiving Any Reimbursement
 And Mean Amount of Reimbursement
 Per Person Per Quarter, Pre- and Post-Referral

Counties	All Medicaid Categories Combined	General Medical Out Patient Treatment Reimbursement					
		Average Per Cent of Offender Group with Any Reimbursement in Quarter			Mean Dollar Amounts Reimbursed Per Person per Quarter		
		Pre Referral	Post Referral	Difference	Pre Referral	Post Referral	Difference
King	All Offenders	12.9%	15.3%	2.3%	61	97	35
	Graduates	11.6%	19.8%	8.3%	51	105	54
	Did Not Finish	15.9%	18.7%	2.8%	71	115	44
	Opt Out	12.3%	14.3%	2.0%	60	95	35
	Ineligible	11.8%	11.3%	-0.5%	59	71	12
Pierce	All Offenders	10.4%	13.1%	2.6%		49	34
	Graduates	14.2%	19.3%	5.1%	59	135	76
	Did Not Finish	11.4%	12.4%	0.9%	47	66	19
	Opt Out	10.6%	12.7%	2.1%	49	66	17
	Ineligible	8.6%	11.5%	3.0%	46	82	36
Spokane	All Offenders	13.6%	12.2%	-1.5%	66	76	10
	Graduates	14.3%	18.9%	4.6%	58	116	58
	Did Not Finish	14.8%	17.4%	2.6%	63	99	36
	Opt Out	17.0%	14.4%	-2.6%	97	110	14
	Ineligible	12.7%	11.0%	-1.7%	59	64	5
Thurston	All Offenders	13.8%	12.4%	-1.4%	66	66	1
	Graduates	13.4%	11.0%	-2.4%	67	52	-16
	Did Not Finish	15.1%	14.5%	-0.6%	68	88	20
	Opt Out	13.0%	11.2%	-1.8%	63	61	-1
	Ineligible	16.2%	16.2%	0.0%	78	61	-17
Skagit	All Offenders	24.1%	30.8%	6.7%	171	176	6
	Graduates	22.8%	35.4%	12.6%	195	205	11
	Did Not Finish	26.7%	26.4%	-0.3%	148	147	-1
	Opt Out	0.0%	0.0%	0.0%	0	0	0
	Ineligible						
Kitsap	All Offenders	17.0%	19.0%	2.0%	105	84	-21
	Graduates	0.0%	7.5%	7.5%	0	62	62
	Did Not Finish	27.1%	25.1%	-2.0%	169	100	-69
	Opt Out	0.0%	0.0%	0.0%	0	0	0
	Ineligible	8.3%	22.2%	13.9%	44	102	58

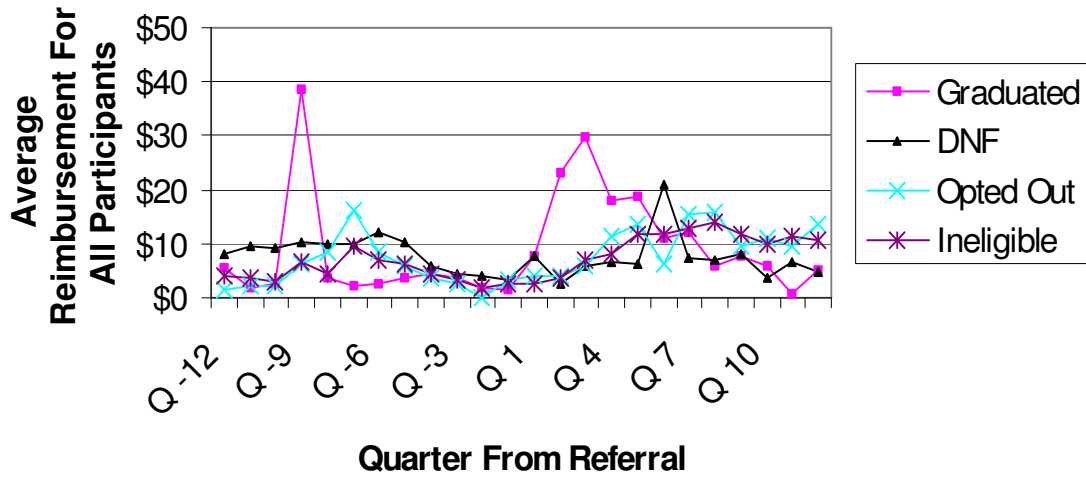
King County Medicaid Reimbursement Amounts Chemical Dependency Treatment



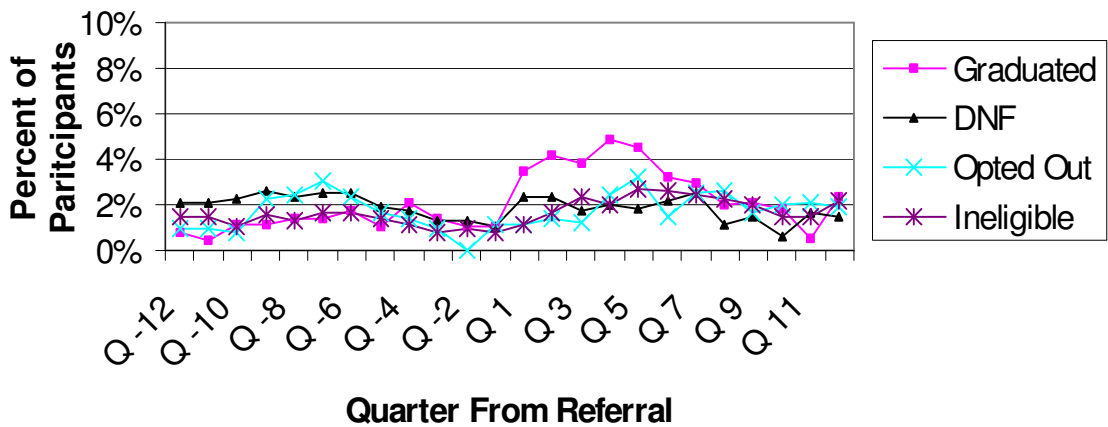
King County Percent Receiving Medicaid Reimbursements For Chemical Dependency Treatment



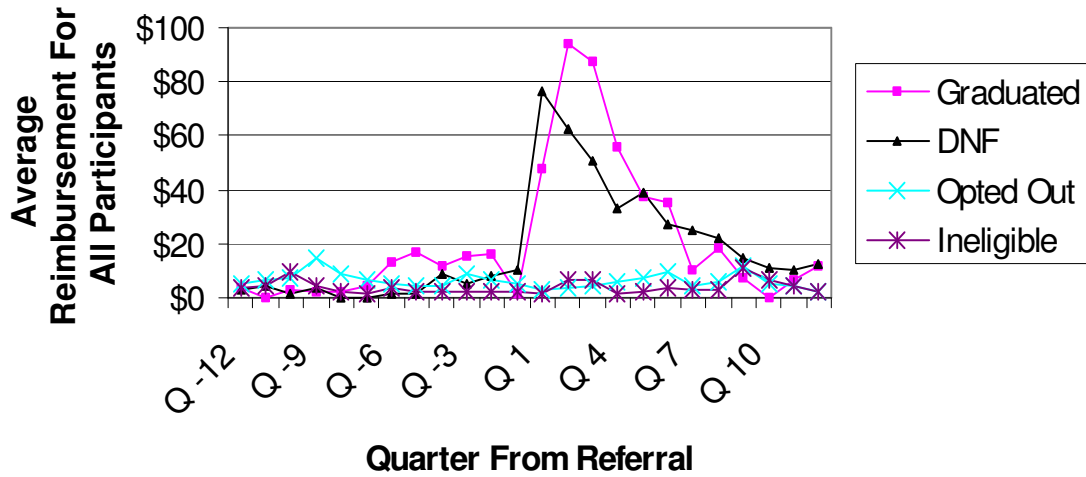
Pierce County Medicaid Reimbursement Amounts Chemical Dependency Treatment



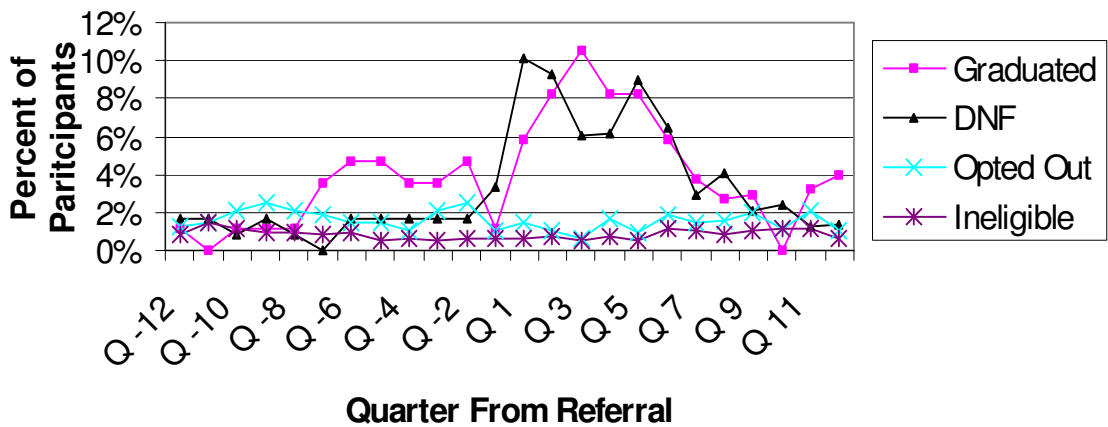
Pierce County Percent Receiving Medicaid Reimbursements For Chemical Dependency Treatment



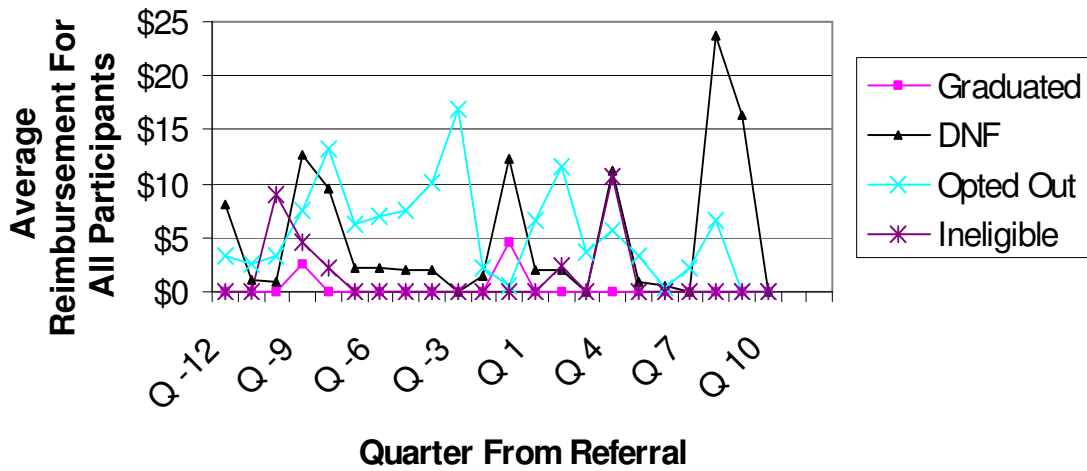
Spokane County Medicaid Reimbursement Amounts Chemical Dependency Treatment



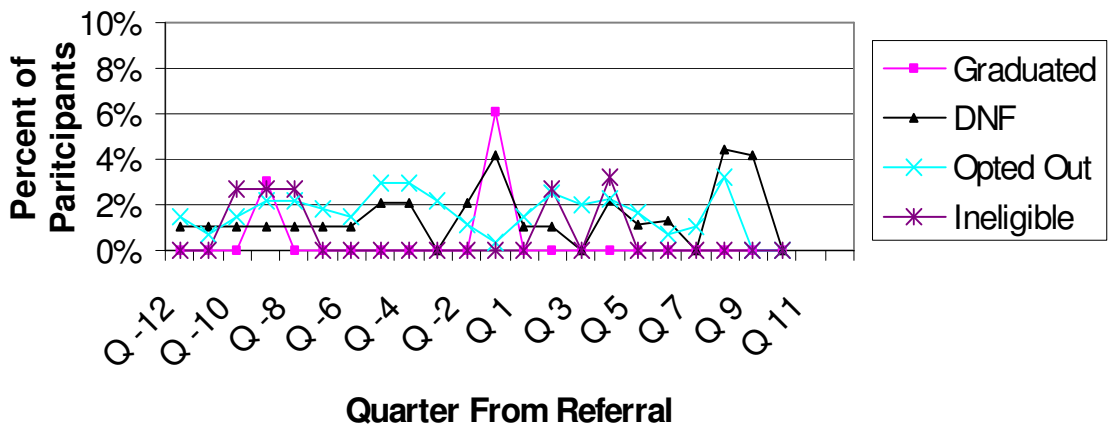
Spokane County Percent Receiving Medicaid Reimbursements For Chemical Dependency Treatment



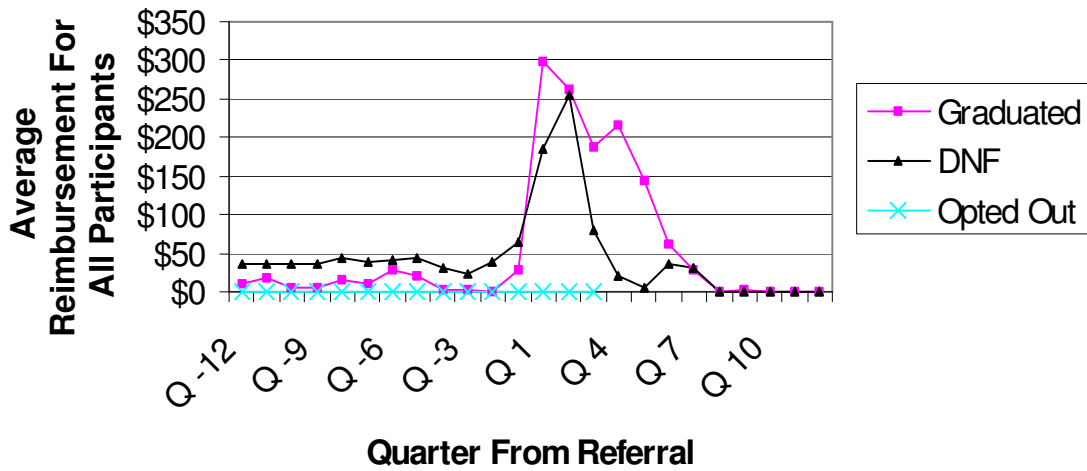
Thurston County Medicaid Reimbursement Amounts Chemical Dependency Treatment



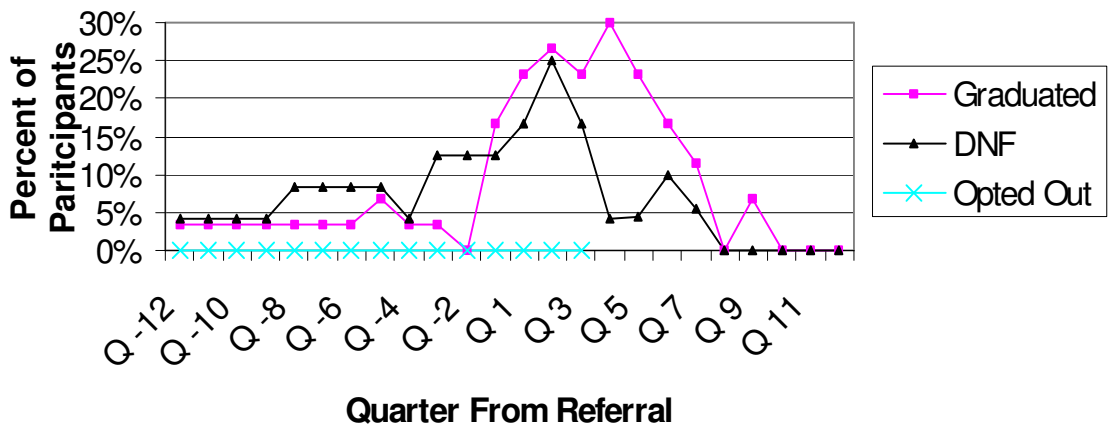
Thurston County Percent Receiving Medicaid Reimbursements For Chemical Dependency Treatment



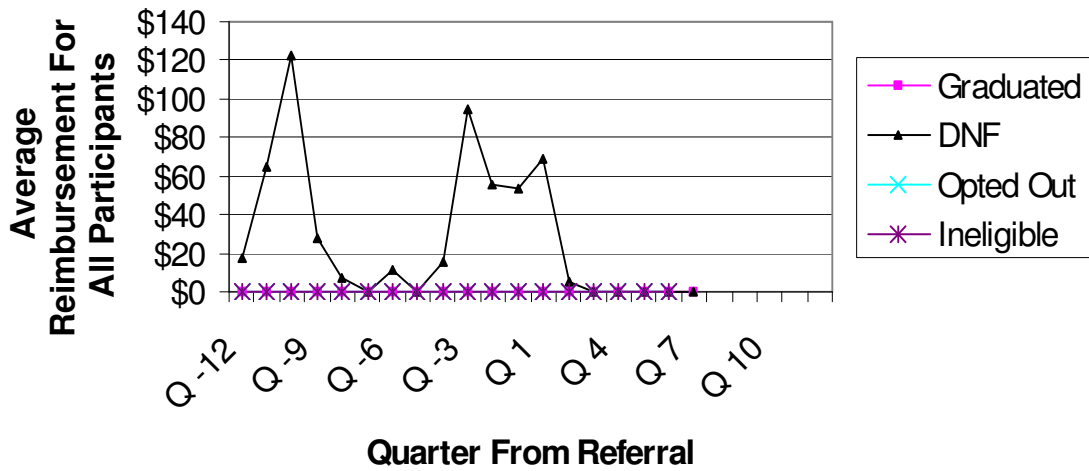
Skagit County Medicaid Reimbursement Amounts Chemical Dependency Treatment



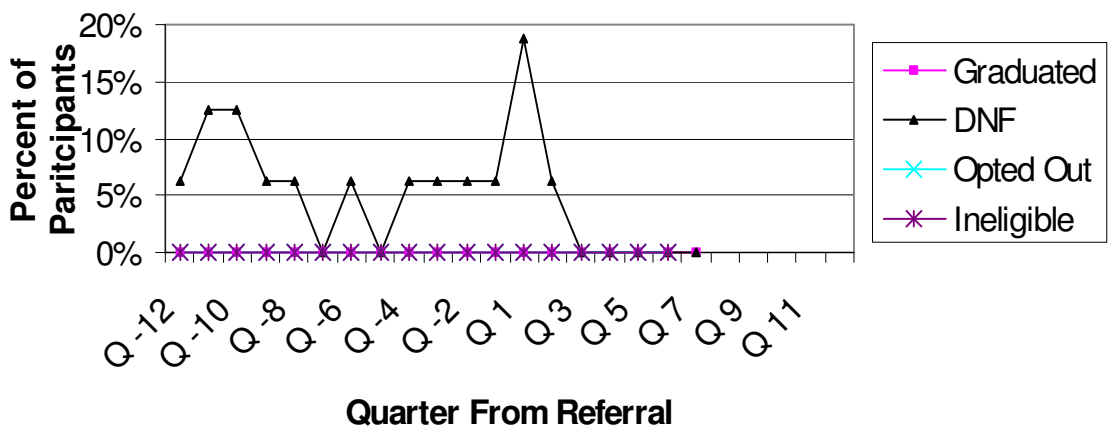
Skagit County Percent Receiving Medicaid Reimbursements For Chemical Dependency Treatment



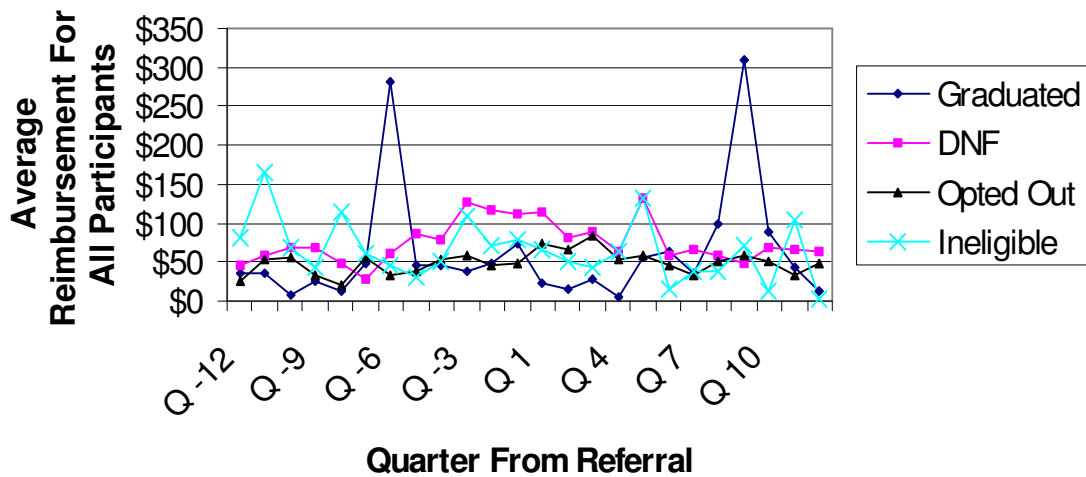
Kitsap County Medicaid Reimbursement Amounts Chemical Dependency Treatment



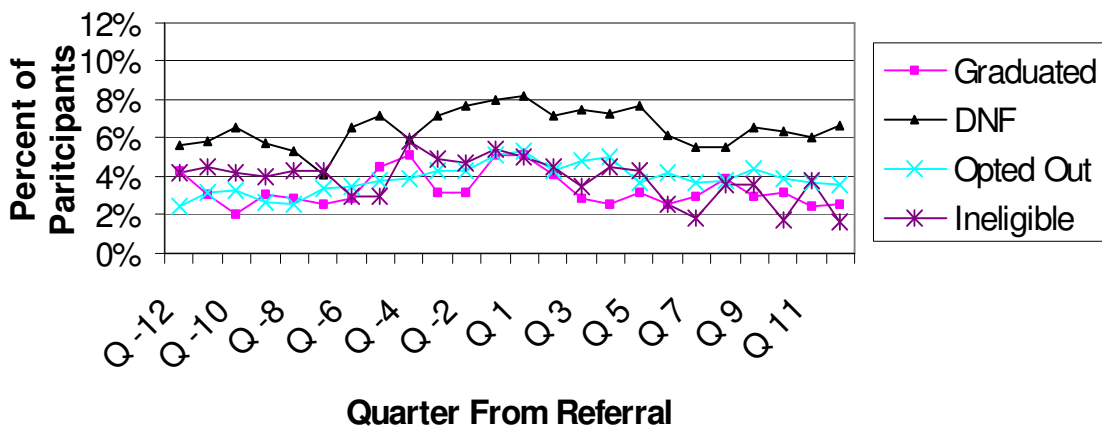
Kitsap County Percent Receiving Medicaid Reimbursements For Chemical Dependency Treatment



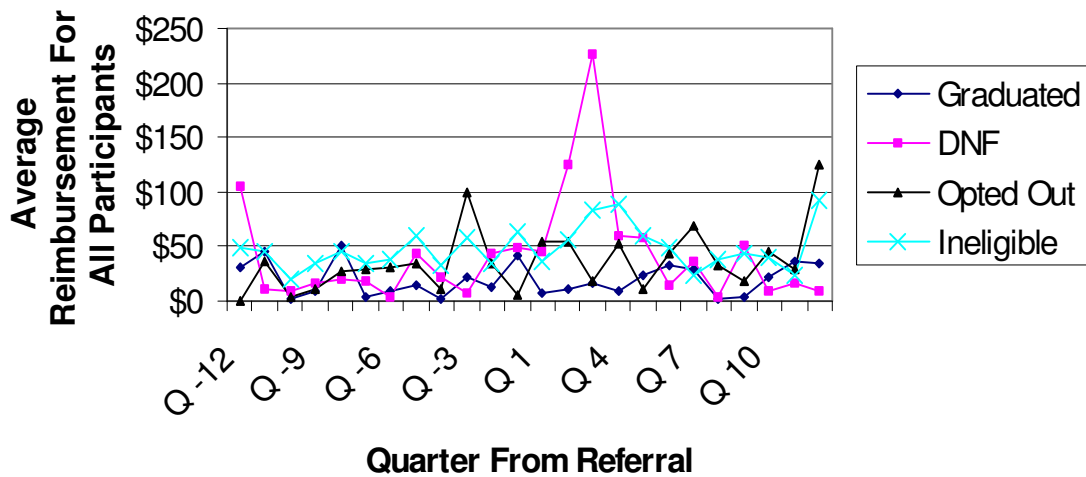
King County Medicaid Reimbursement Amounts Emergency Room Treatment



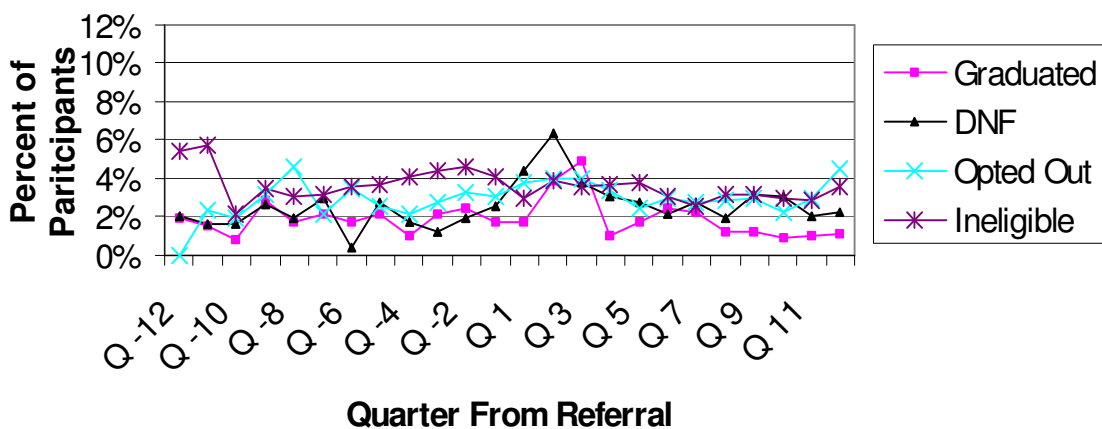
King County Percent Receiving Medicaid Reimbursements For Emergency Room Treatment



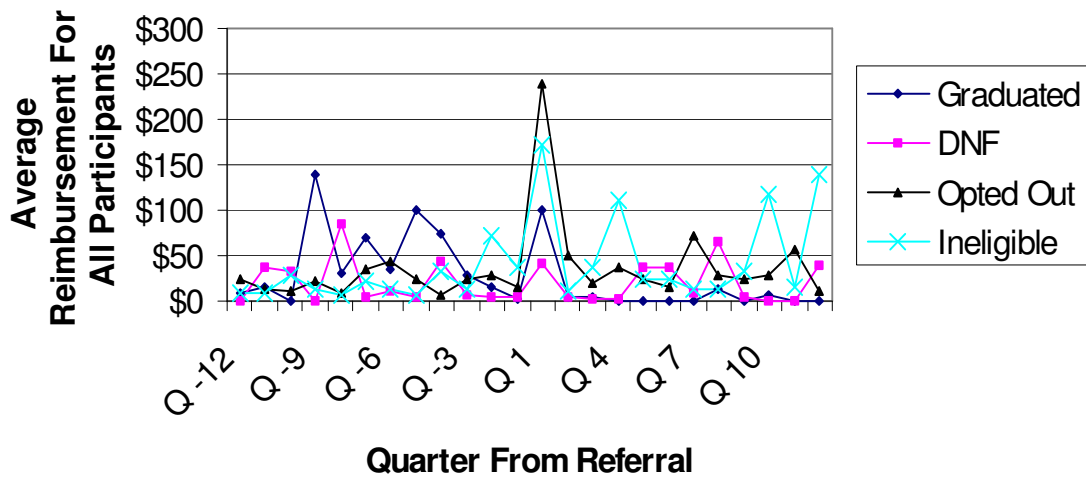
Pierce County Medicaid Reimbursement Amounts Emergency Room Treatment



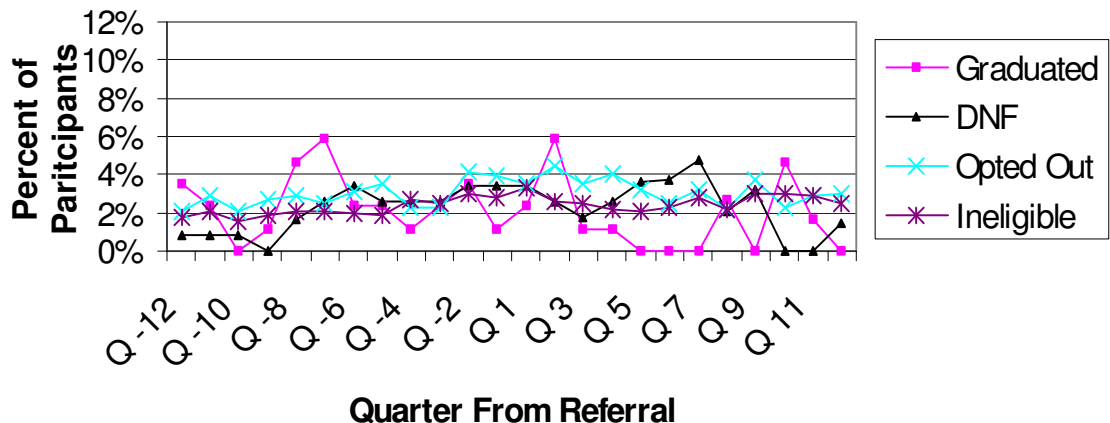
Pierce County Percent Receiving Medicaid Reimbursements For Emergency Room Treatment



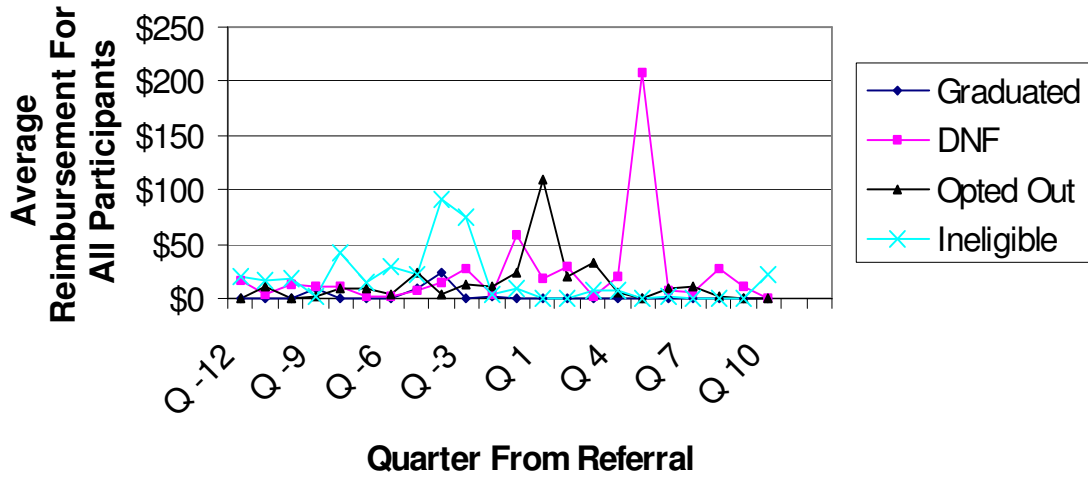
Spokane County Medicaid Reimbursement Amounts Emergency Room Treatment



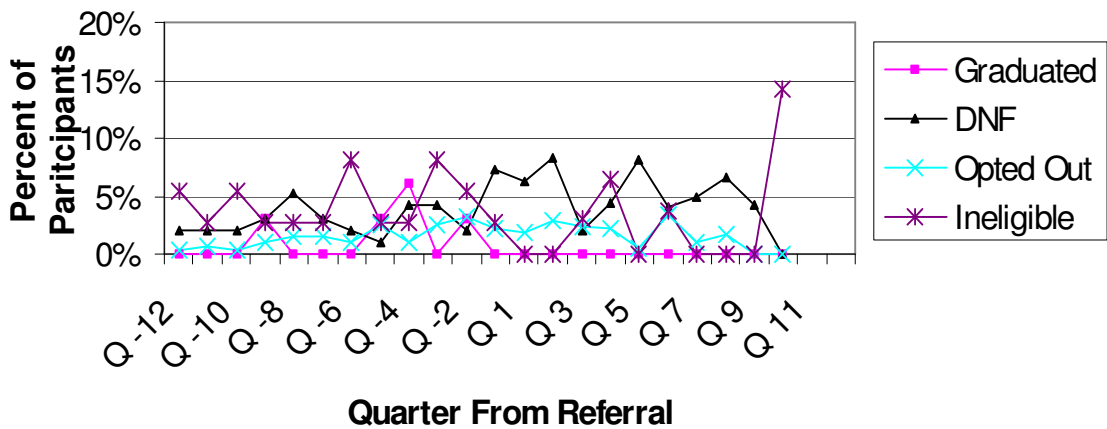
Spokane County Percent Receiving Medicaid Reimbursements For Emergency Room Treatment



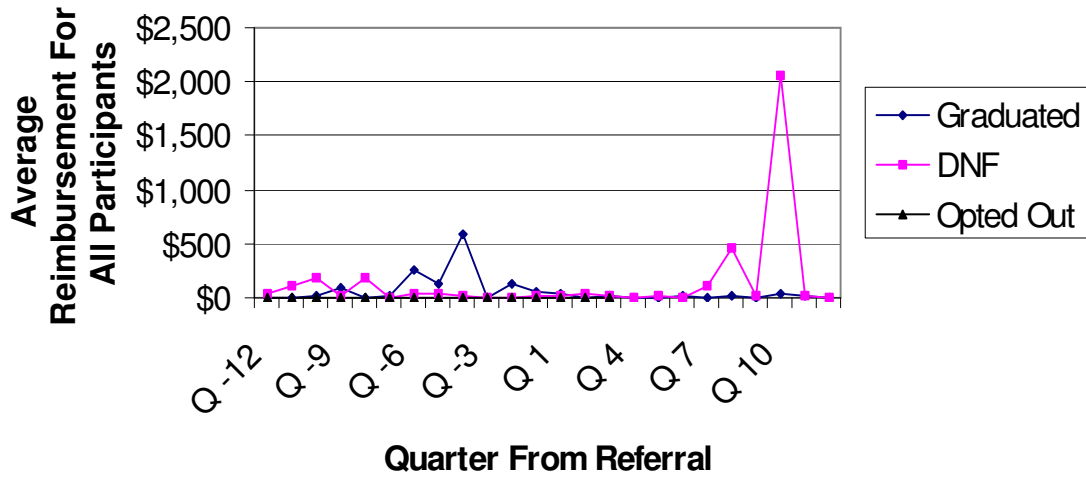
Thurston County Medicaid Reimbursement Amounts Emergency Room Treatment



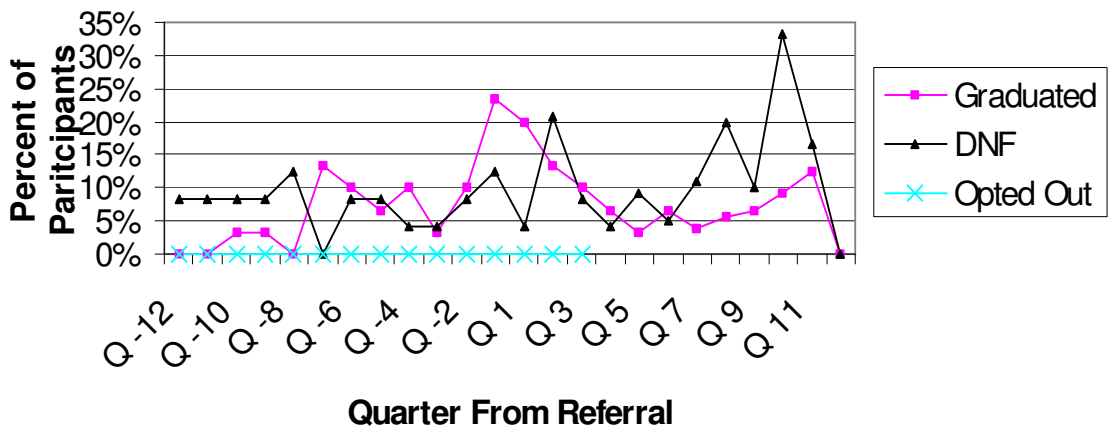
Thurston County Percent Receiving Medicaid Reimbursements For Emergency Room Treatment



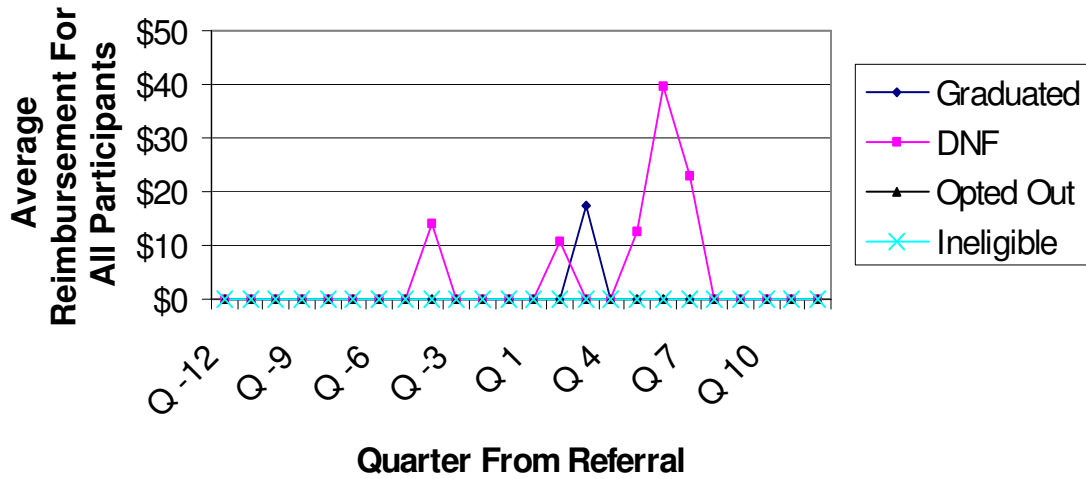
Skagit County Medicaid Reimbursement Amounts Emergency Room Treatment



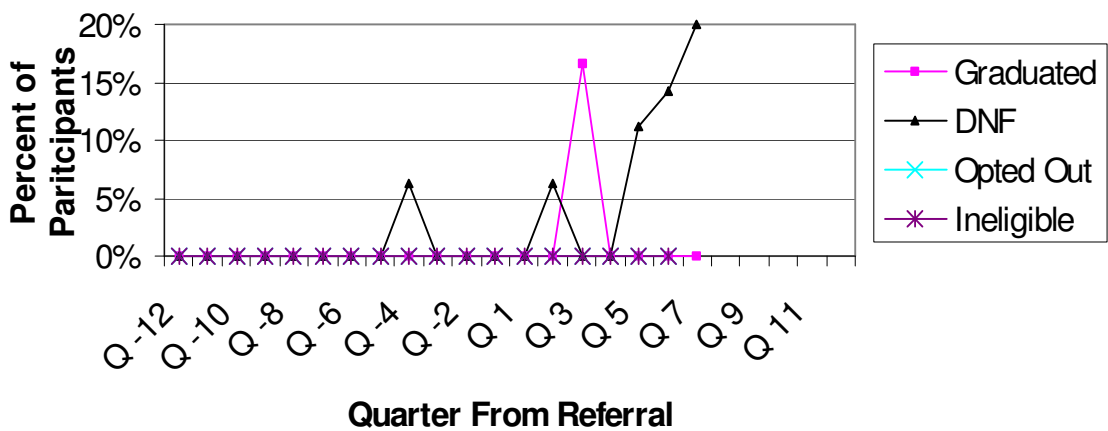
Skagit County Percent Receiving Medicaid Reimbursements For Emergency Room Treatment



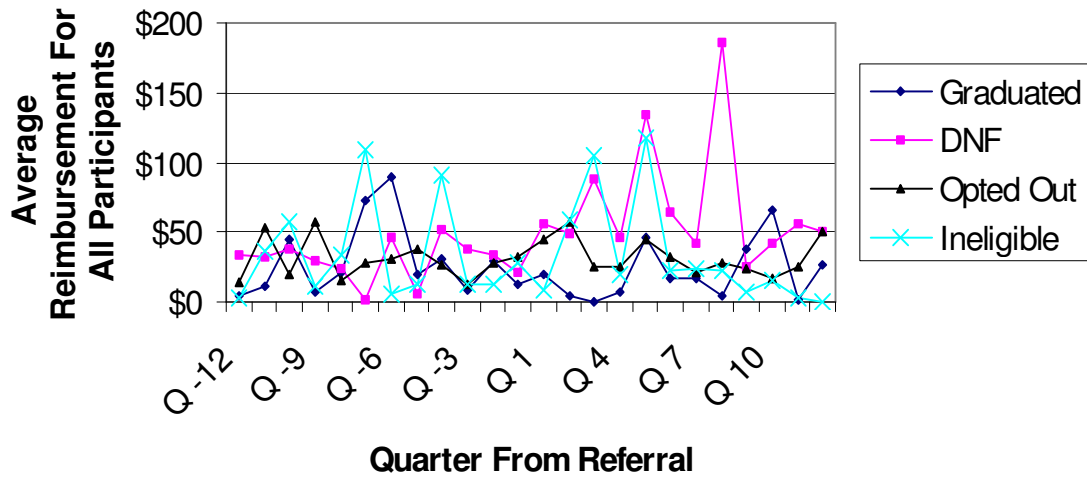
Kitsap County Medicaid Reimbursement Amounts Emergency Room Treatment



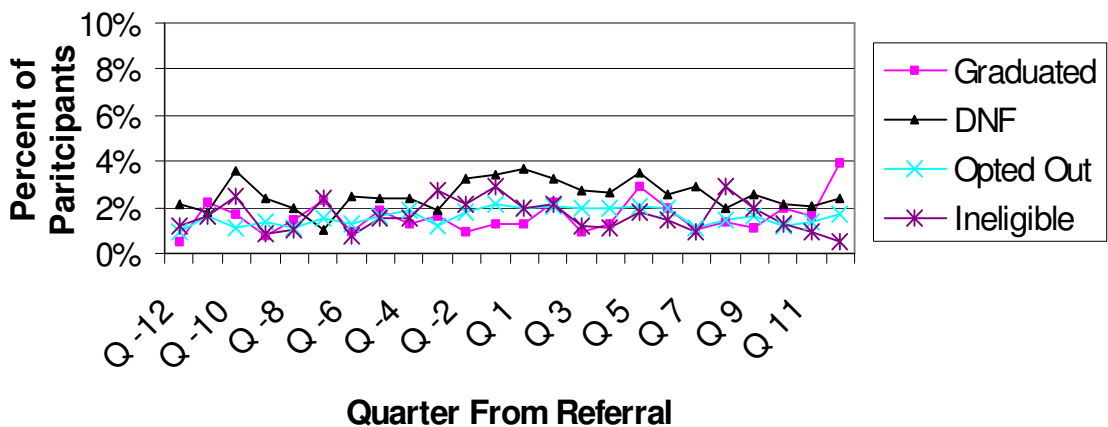
Kitsap County Percent Receiving Medicaid Reimbursements For Emergency Room Treatment



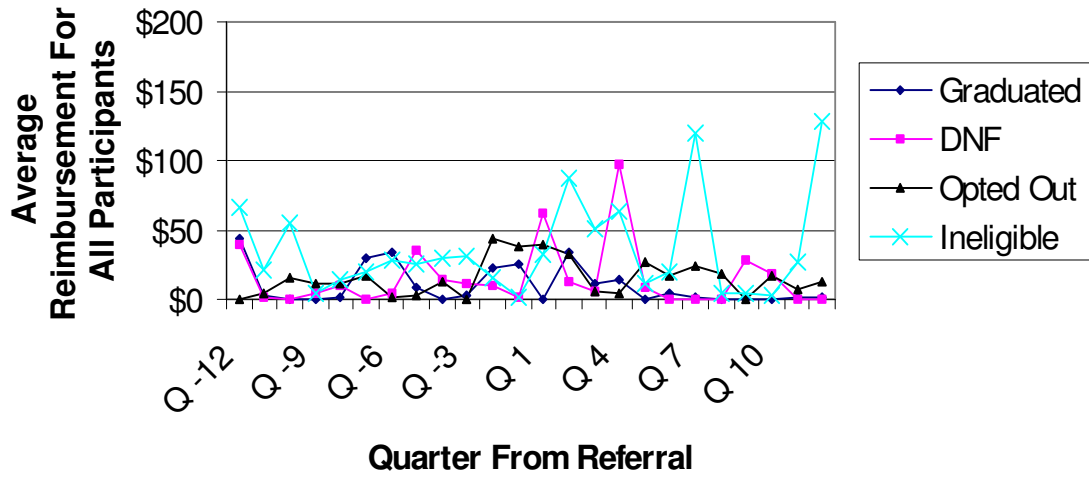
King County Medicaid Reimbursement Amounts Medical Inpatient Treatment



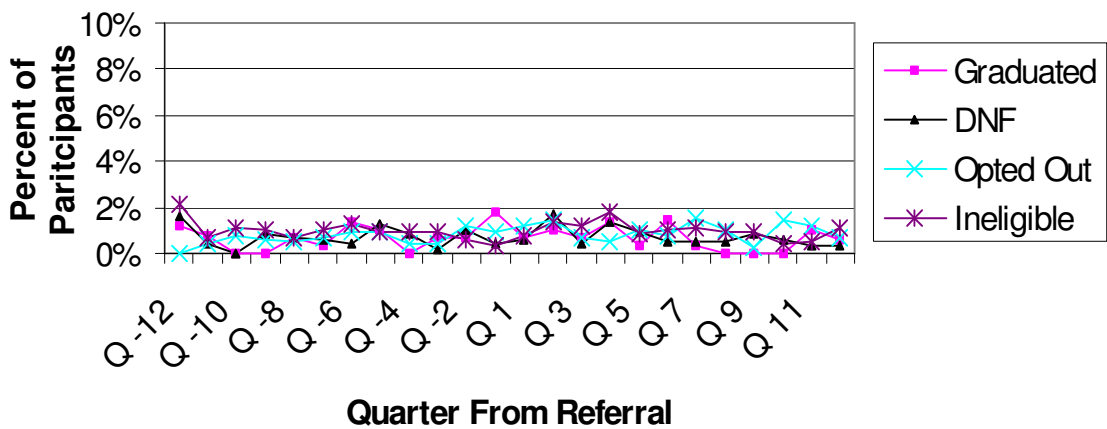
King County Percent Receiving Medicaid Reimbursements For Medical Inpatient Treatment



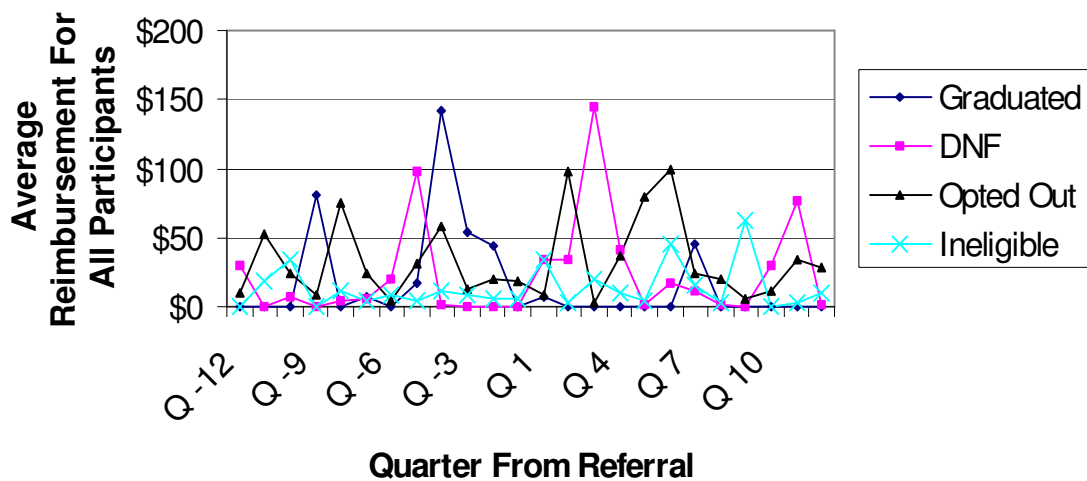
Pierce County Medicaid Reimbursement Amounts Medical Inpatient Treatment



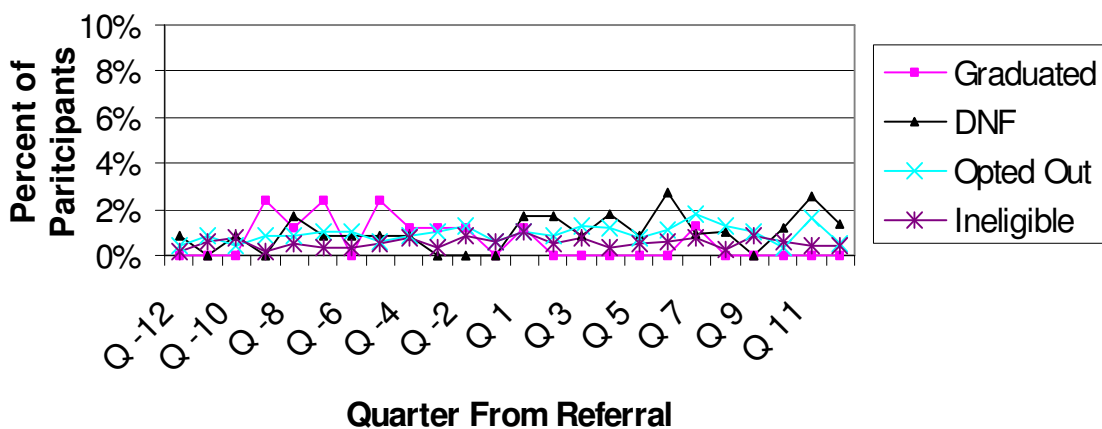
Pierce County Percent Receiving Medicaid Reimbursements For Medical Inpatient Treatment



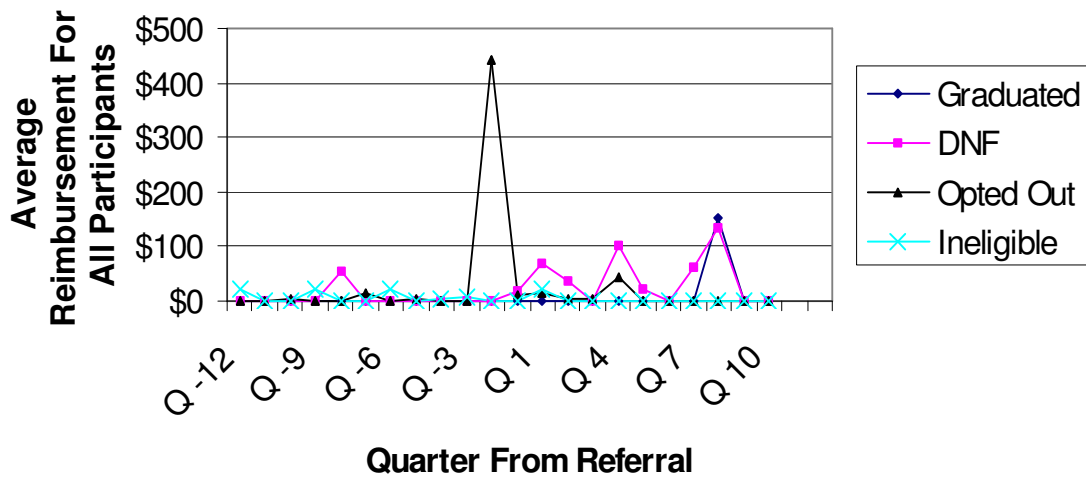
Spokane County Medicaid Reimbursement Amounts Medical Inpatient Treatment



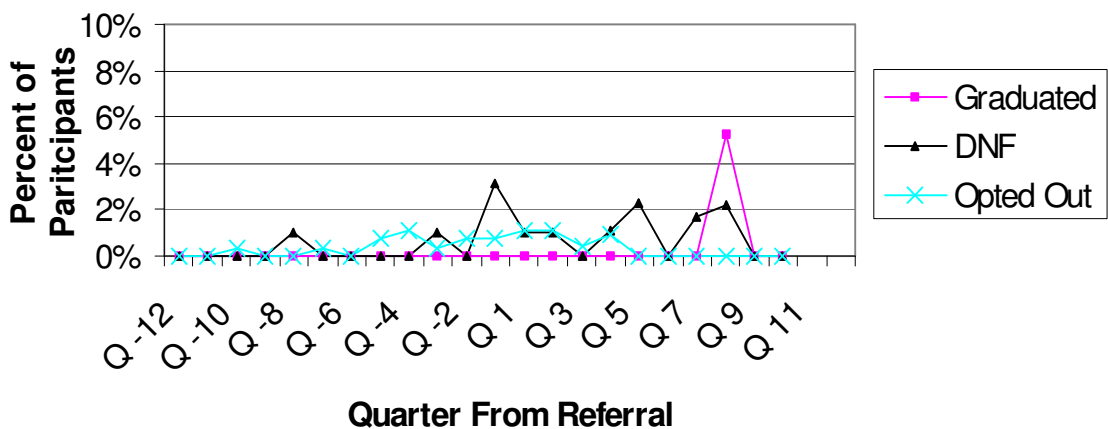
Spokane County Percent Receiving Medicaid Reimbursements For Medical Inpatient Treatment



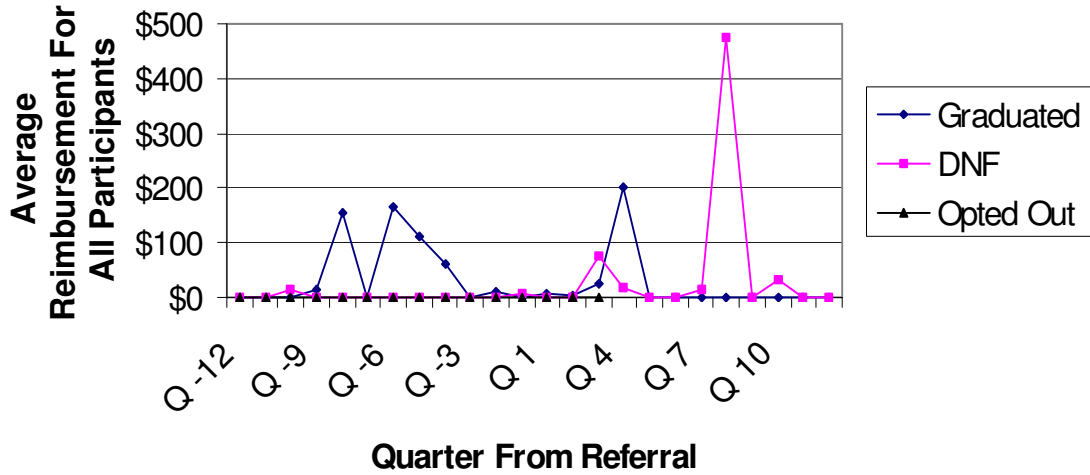
Thurston County Medicaid Reimbursement Amounts Medical Inpatient Treatment



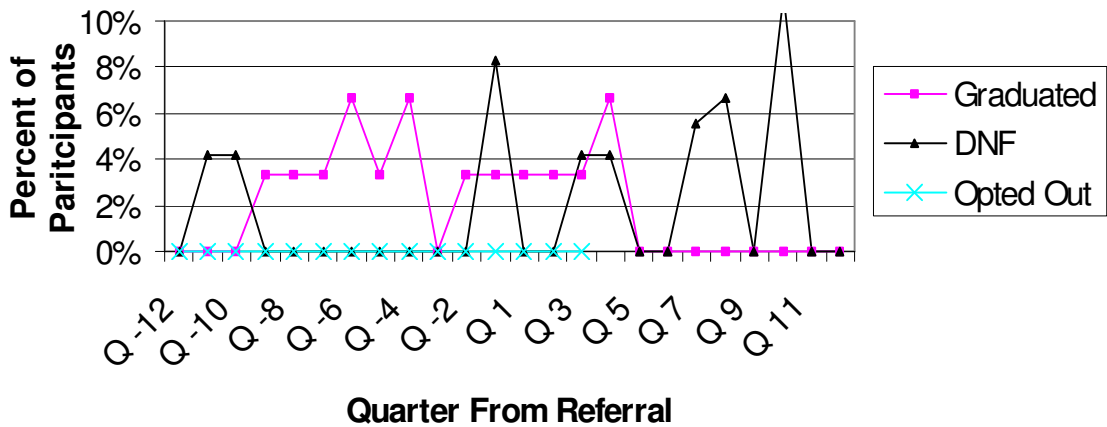
Thurston County Percent Receiving Medicaid Reimbursements For Medical Inpatient Treatment

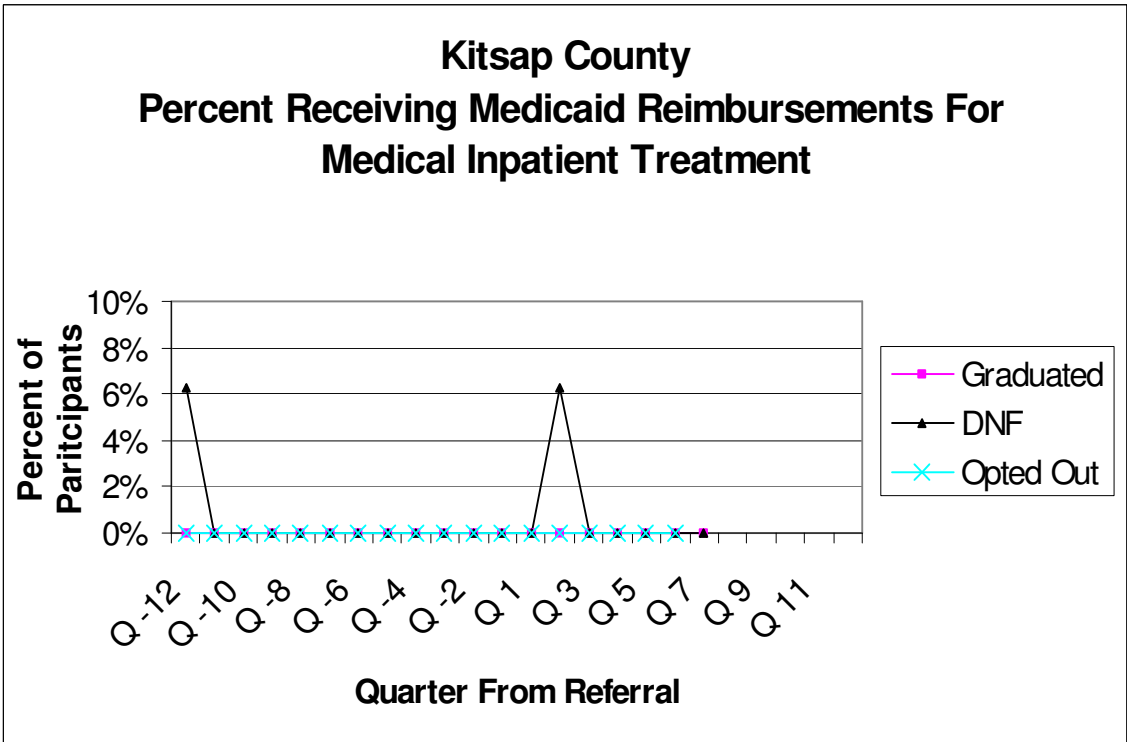
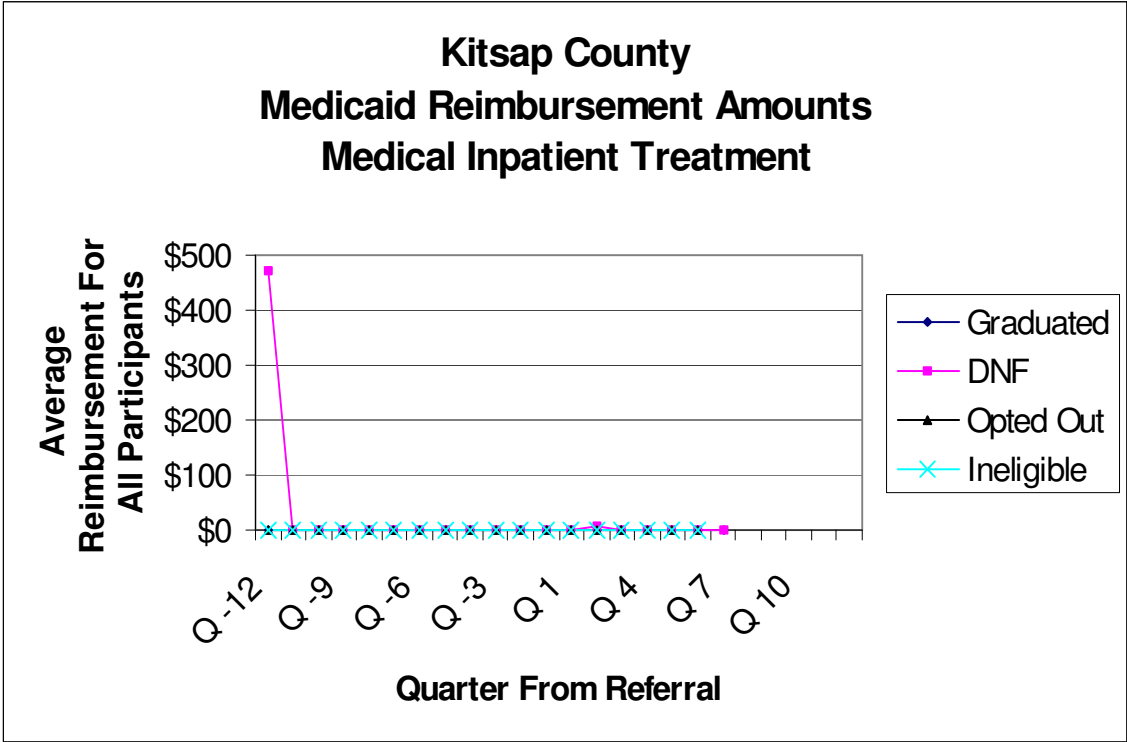


Skagit County Medicaid Reimbursement Amounts Medical Inpatient Treatment

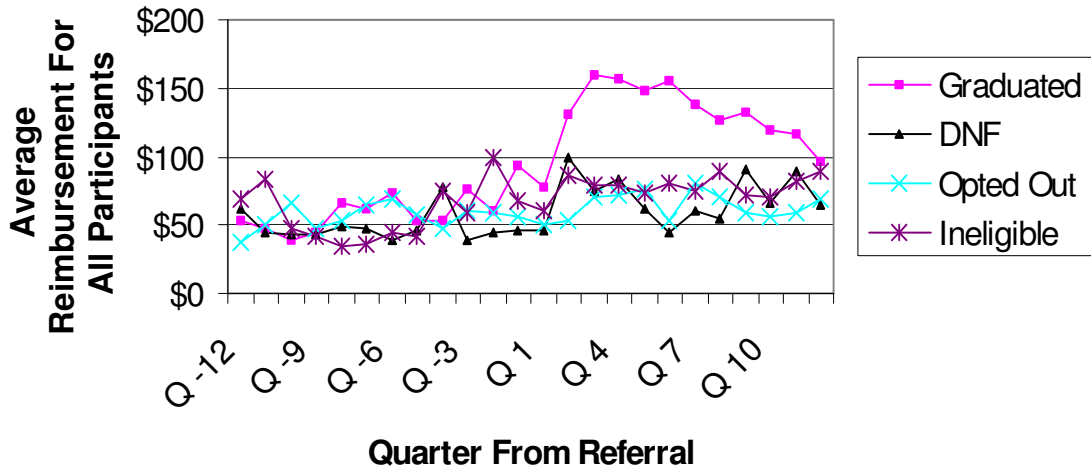


Skagit County Percent Receiving Medicaid Reimbursements For Medical Inpatient Treatment

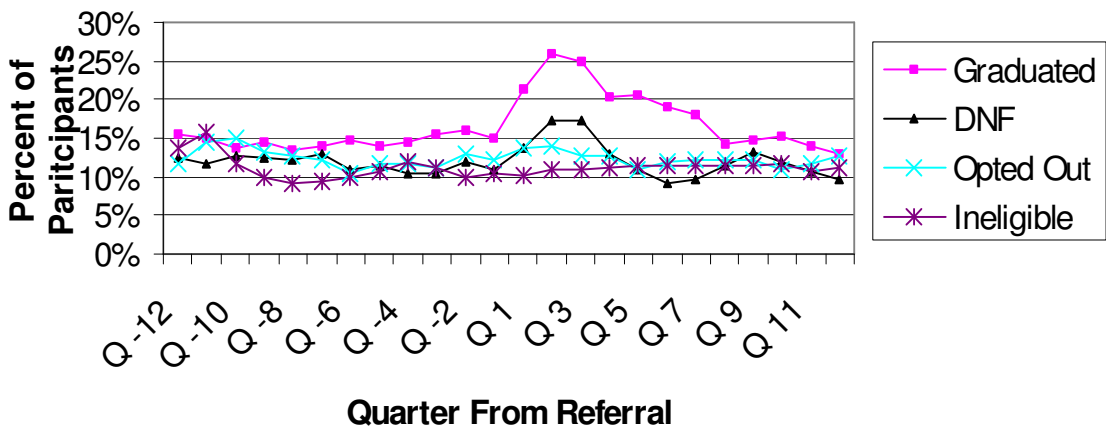




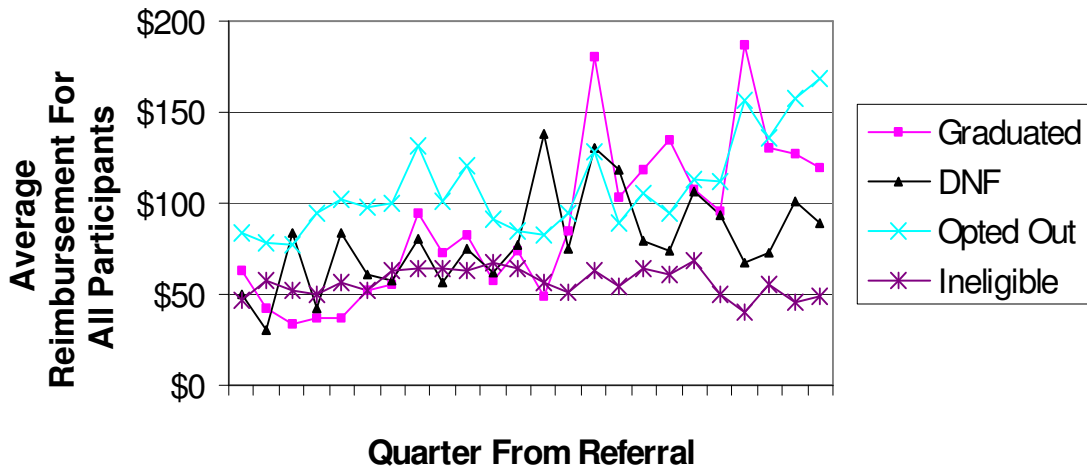
Pierce County Medicaid Reimbursement Amounts Medical Outpatient Treatment



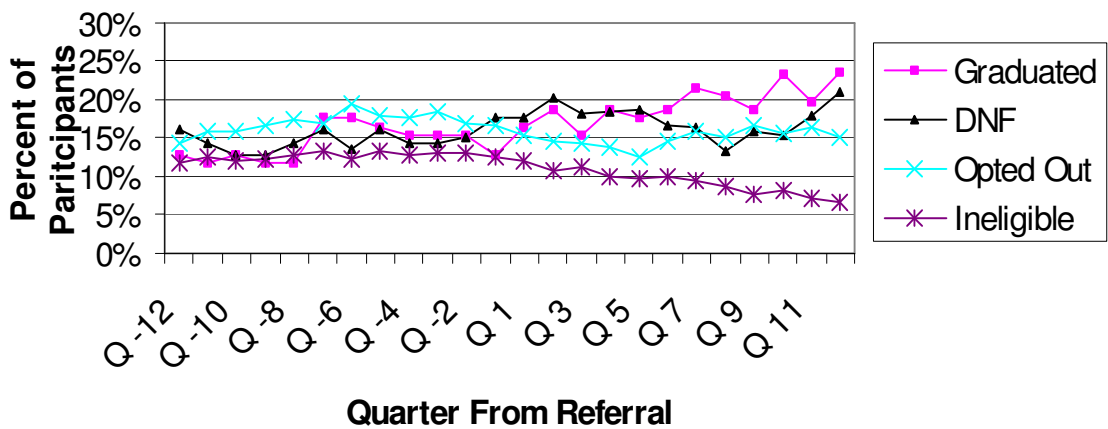
Pierce County Percent Receiving Medicaid Reimbursements For Medical Outpatient Treatment



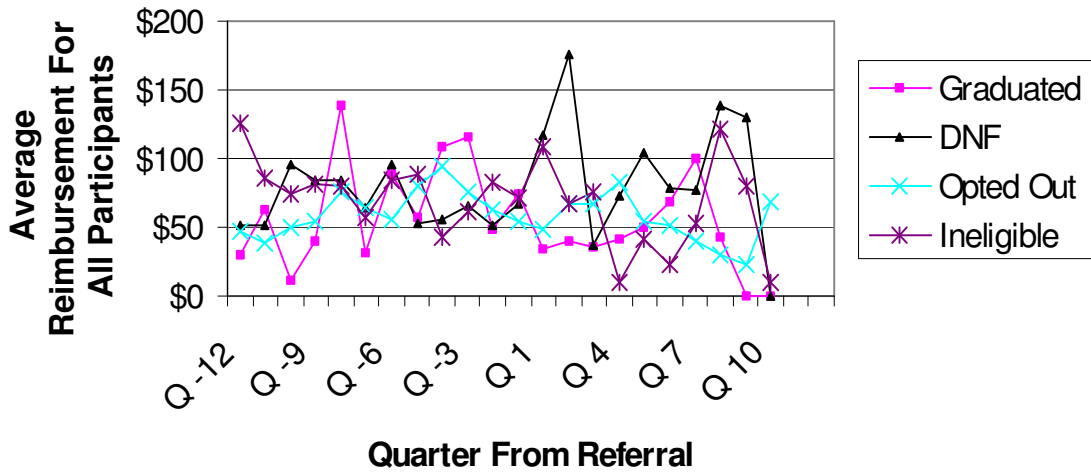
Spokane County Medicaid Reimbursement Amounts Medical Outpatient Treatment



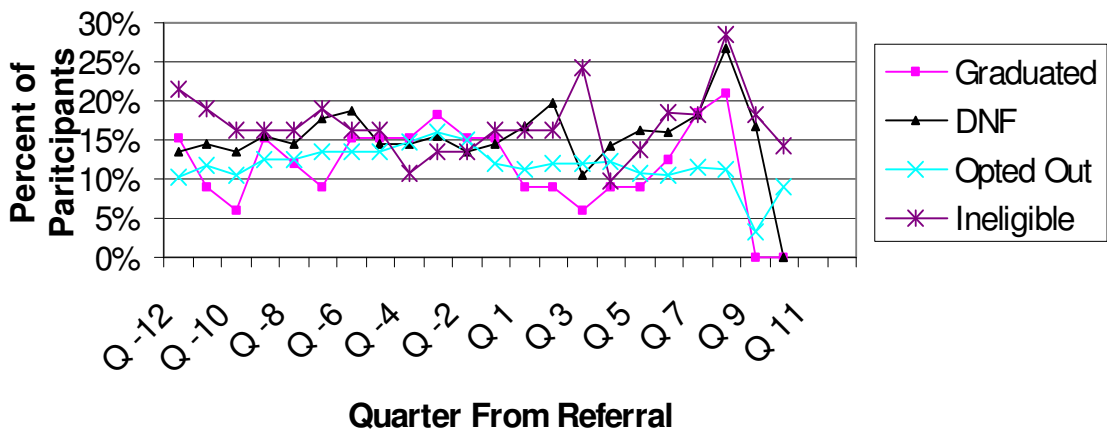
Spokane County Percent Receiving Medicaid Reimbursements For Medical Outpatient Treatment

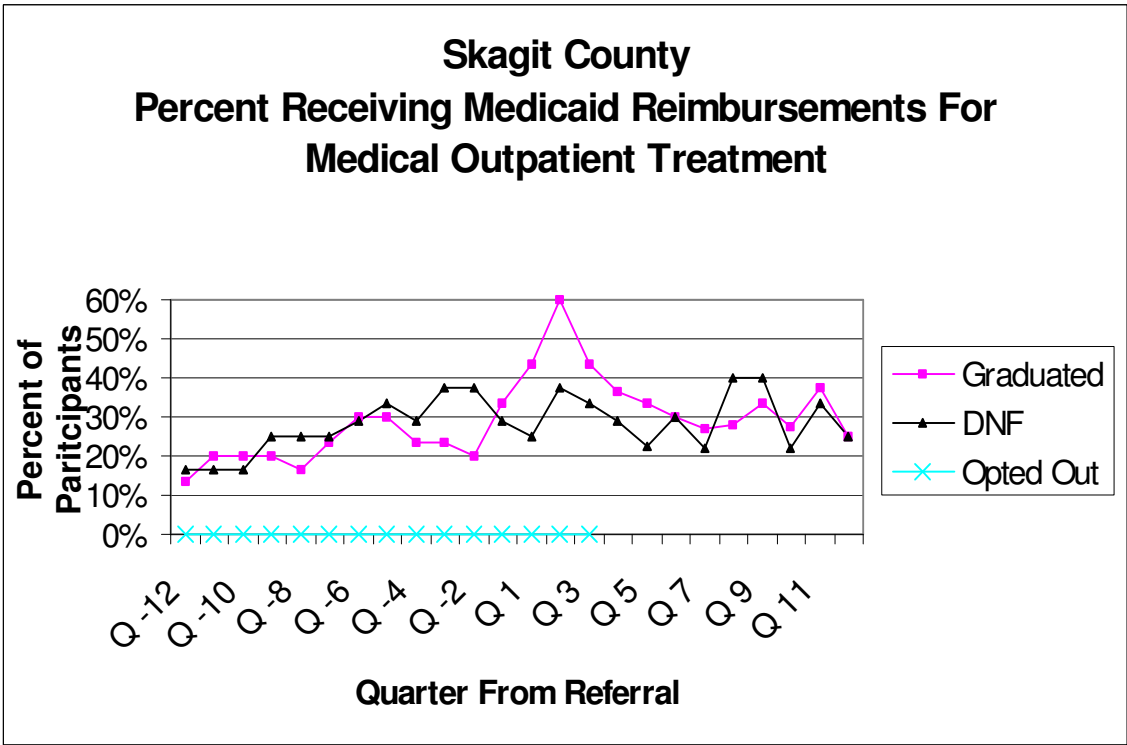
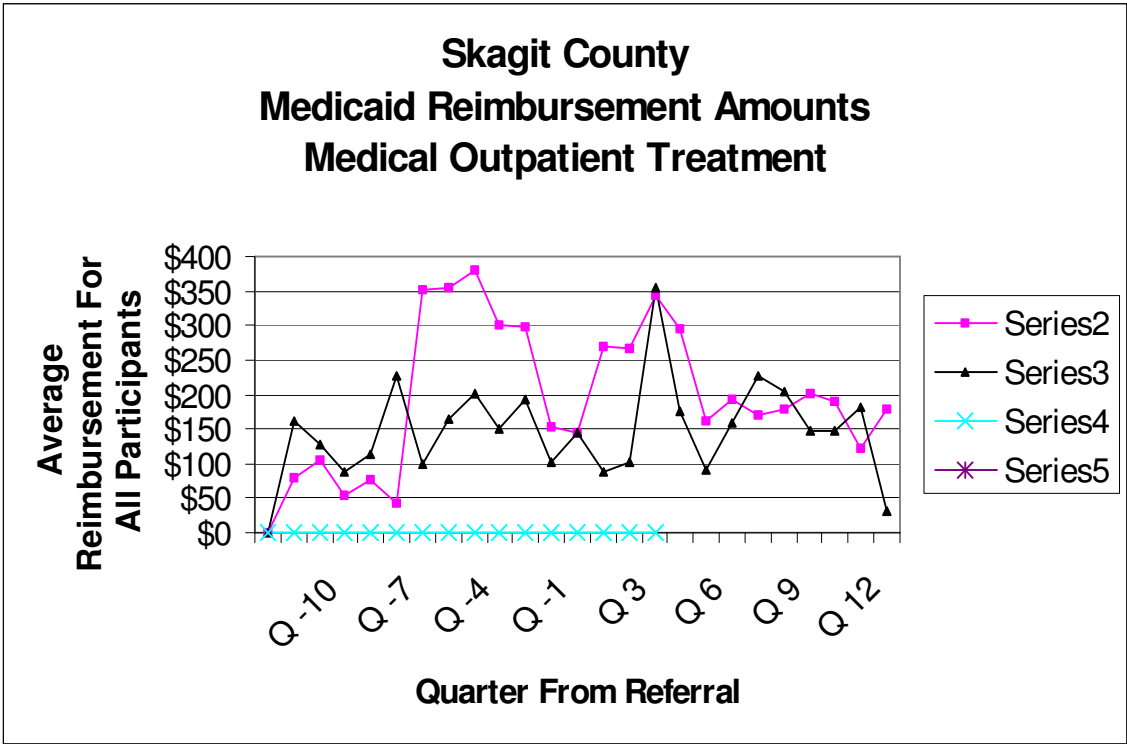


Thurston County Medicaid Reimbursement Amounts Medical Outpatient Treatment

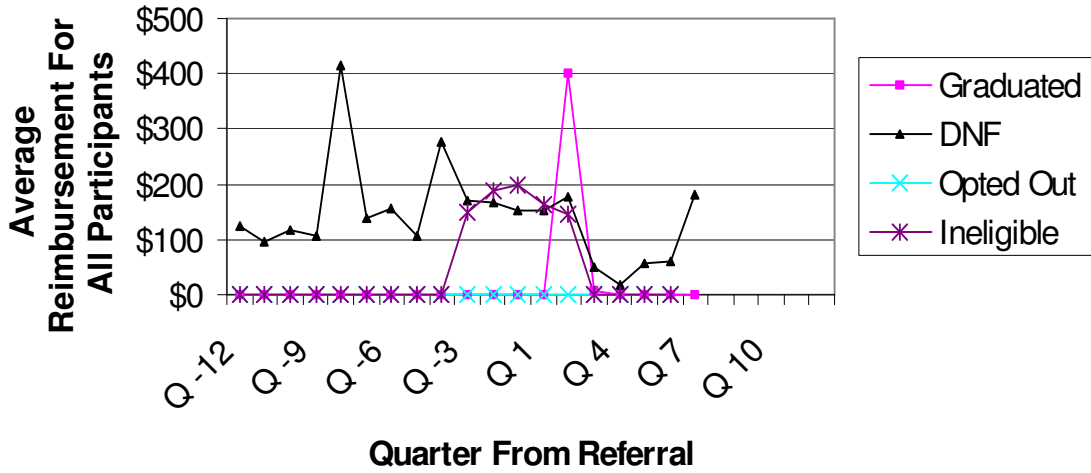


Thurston County Percent Receiving Medicaid Reimbursements For Medical Outpatient Treatment

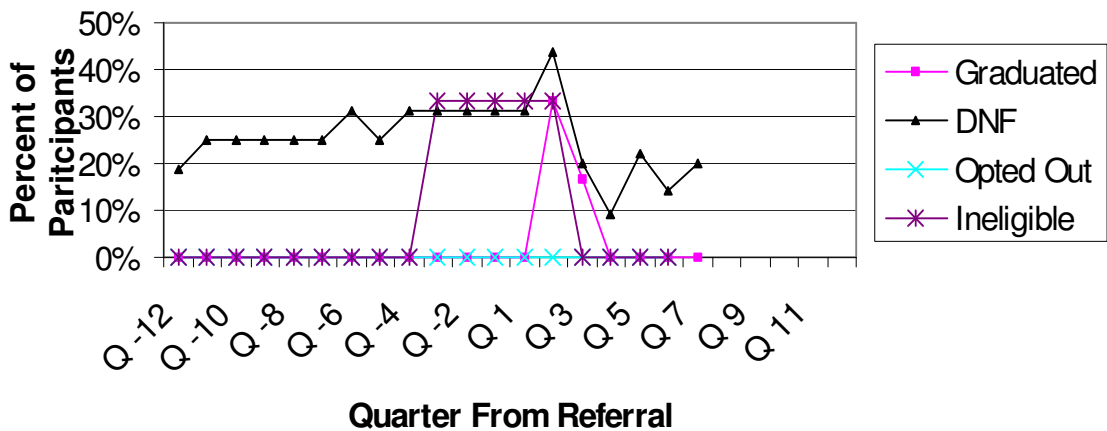




Kitsap County Medicaid Reimbursement Amounts Medical Outpatient Treatment



Kitsap County Percent Receiving Medicaid Reimbursements For Medical Outpatient Treatment



King County
 Percent of Each Drug Court Group Receiving Some Medicaid Reimbursement in Each Medicaid Category
 For Each Quarter Pre- and Post-Drug Court Referral

King County: Percent Receiving Medicaid Reimbursement By Reimbursement Category and Offender Group																									
Quarters From Referral to Drug Court																									
		-12	-11	-10	-9	-8	-7	-6	-5	-4	-3	-2	-1	1	2	3	4	5	6	7	8	9	10	11	12
Chemical Dependency Outpatient Treatment																									
Graduated		2%	3%	3%	3%	4%	1%	1%	1%	1%	2%	2%	3%	5%	5%	5%	6%	6%	5%	4%	3%	3%	4%	4%	4%
DNF		4%	4%	4%	4%	4%	4%	3%	4%	3%	4%	3%	3%	5%	5%	4%	4%	4%	3%	4%	4%	4%	3%	3%	3%
Opted Out		1%	1%	1%	1%	1%	1%	1%	1%	1%	1%	1%	1%	2%	2%	1%	1%	1%	2%	2%	2%	2%	2%	2%	2%
Ineligible		3%	3%	1%	1%	1%	2%	1%	1%	1%	1%	2%	1%	1%	2%	1%	2%	2%	2%	2%	2%	2%	1%	2%	3%
Detoxification																									
Graduated		0%	0%	0%	0%	0%	0%	0%	0%	0%	0%	0%	0%	0%	0%	0%	0%	0%	0%	0%	0%	0%	0%	0%	0%
DNF		0%	0%	0%	0%	0%	0%	0%	0%	0%	0%	0%	0%	0%	0%	0%	0%	0%	0%	0%	0%	0%	0%	0%	0%
Opted Out		0%	0%	0%	0%	0%	0%	0%	0%	0%	0%	0%	0%	0%	0%	0%	0%	0%	0%	0%	0%	0%	0%	0%	0%
Ineligible		0%	0%	0%	0%	0%	0%	0%	0%	0%	0%	0%	0%	0%	0%	0%	0%	0%	0%	0%	0%	0%	0%	0%	0%
Emergency Room Services																									
Graduated		4%	3%	2%	3%	3%	3%	3%	4%	5%	3%	3%	5%	5%	4%	3%	3%	3%	3%	3%	4%	3%	3%	3%	3%
DNF		6%	6%	7%	6%	5%	4%	7%	7%	6%	7%	8%	8%	8%	7%	7%	7%	8%	6%	6%	6%	7%	6%	6%	7%
Opted Out		2%	3%	3%	3%	3%	3%	3%	4%	4%	4%	4%	5%	5%	4%	5%	5%	4%	4%	4%	4%	4%	4%	4%	4%
Ineligible		4%	5%	4%	4%	4%	4%	3%	3%	6%	5%	5%	5%	5%	5%	3%	5%	4%	3%	2%	4%	4%	2%	4%	2%
Medical Inpatient Treatment																									
Graduated		0%	2%	2%	1%	1%	2%	1%	2%	1%	2%	1%	1%	1%	2%	1%	1%	3%	2%	1%	1%	1%	2%	2%	4%
DNF		2%	2%	4%	2%	2%	1%	3%	2%	2%	2%	3%	3%	4%	3%	3%	3%	4%	3%	3%	2%	3%	2%	2%	2%
Opted Out		1%	2%	1%	1%	1%	2%	1%	2%	2%	1%	2%	2%	2%	2%	2%	2%	2%	2%	1%	1%	2%	1%	1%	2%
Ineligible		1%	2%	2%	1%	1%	2%	1%	2%	2%	3%	2%	3%	2%	2%	1%	1%	2%	1%	1%	3%	2%	1%	1%	1%

King County (cont.)		Quarters From Referral to Drug Court																							
		-12	-11	-10	-9	-8	-7	-6	-5	-4	-3	-2	-1	1	2	3	4	5	6	7	8	9	10	11	12
Mental Health Outpatient Treatment																									
Graduated	1%	1%	2%	2%	1%	1%	1%	1%	2%	1%	1%	0%	1%	1%	0%	1%	1%	2%	2%	1%	2%	2%	1%	1%	
DNF	1%	1%	1%	1%	1%	2%	2%	1%	1%	1%	1%	2%	2%	2%	2%	2%	1%	1%	1%	1%	2%	2%	2%	2%	
Opted Out	1%	1%	1%	1%	1%	1%	1%	1%	1%	1%	1%	1%	1%	1%	1%	1%	1%	1%	1%	1%	1%	1%	1%	1%	
Ineligible	1%	1%	2%	1%	1%	1%	1%	2%	1%	1%	0%	1%	2%	1%	1%	0%	1%	0%	1%	1%	0%	0%	0%	0%	
Nursing Home and Congregate Care Services																									
Graduated	0%	0%	0%	0%	0%	0%	0%	0%	0%	0%	0%	0%	0%	0%	0%	0%	0%	0%	0%	0%	0%	0%	0%	0%	
DNF	0%	0%	0%	0%	0%	0%	0%	0%	0%	0%	0%	0%	0%	0%	0%	0%	0%	0%	0%	0%	0%	0%	0%	1%	
Opted Out	0%	0%	0%	0%	0%	0%	0%	0%	0%	0%	0%	0%	0%	0%	1%	0%	0%	0%	0%	0%	1%	0%	0%	0%	
Ineligible	0%	0%	0%	0%	0%	0%	0%	0%	0%	0%	0%	0%	0%	0%	0%	0%	1%	0%	0%	1%	1%	0%	0%	0%	
Medical Outpatient Treatment																									
Graduated	12%	13%	11%	12%	13%	13%	12%	13%	16%	12%	12%	14%	19%	22%	24%	21%	19%	20%	20%	18%	18%	17%	18%	21%	
DNF	18%	18%	17%	16%	16%	14%	16%	18%	17%	18%	19%	21%	22%	21%	20%	19%	18%	17%	17%	17%	17%	18%	16%	16%	
Opted Out	11%	12%	11%	12%	12%	12%	13%	14%	14%	15%	15%	15%	15%	15%	15%	14%	13%	14%	13%	14%	13%	14%	14%	14%	
Ineligible	13%	13%	15%	13%	12%	12%	12%	11%	11%	12%	13%	13%	14%	10%	10%	12%	10%	9%	10%	10%	9%	9%	11%	11%	
Psychiatric Inpatient Treatment																									
Graduated	0%	0%	0%	0%	0%	0%	1%	0%	0%	1%	0%	1%	0%	0%	1%	0%	1%	0%	0%	0%	0%	0%	0%	0%	
DNF	0%	0%	0%	1%	0%	1%	1%	1%	1%	1%	1%	1%	1%	1%	1%	0%	1%	1%	1%	0%	0%	0%	1%	0%	
Opted Out	0%	0%	0%	0%	0%	0%	0%	0%	0%	0%	0%	1%	0%	0%	1%	1%	0%	0%	0%	0%	0%	0%	0%	0%	
Ineligible	0%	1%	1%	0%	0%	1%	1%	1%	1%	0%	0%	1%	1%	0%	1%	0%	1%	0%	0%	0%	0%	0%	1%	1%	

Pierce County
 Percent of Each Drug Court Group Receiving Some Medicaid Reimbursement in Each Medicaid Category
 For Each Quarter Pre- and Post-Drug Court Referral

Pierce County: Percent Receiving Medicaid Reimbursement By Reimbursement Category and Offender Group																								
Quarters From Referral to Drug Court																								
	-12	-11	-10	-9	-8	-7	-6	-5	-4	-3	-2	-1	1	2	3	4	5	6	7	8	9	10	11	12
Chemical Dependency Outpatient Treatment																								
Graduated	1%	0%	1%	1%	1%	1%	2%	1%	2%	1%	1%	1%	4%	4%	4%	5%	5%	3%	3%	2%	2%	2%	0%	2%
DNF	2%	2%	2%	3%	2%	3%	3%	2%	2%	1%	1%	1%	2%	2%	2%	2%	2%	2%	2%	1%	1%	1%	2%	1%
Opted Out	1%	1%	1%	2%	2%	3%	2%	2%	1%	1%	0%	1%	1%	1%	1%	2%	3%	2%	3%	3%	2%	2%	2%	2%
Ineligible	1%	1%	1%	2%	1%	2%	2%	1%	1%	1%	1%	1%	1%	2%	2%	2%	3%	3%	2%	2%	2%	1%	2%	2%
Detoxification																								
Graduated	0%	0%	0%	0%	0%	0%	0%	0%	0%	0%	0%	0%	0%	0%	0%	0%	0%	0%	0%	0%	0%	0%	0%	0%
DNF	0%	0%	0%	0%	0%	0%	0%	0%	0%	0%	0%	0%	0%	0%	0%	0%	0%	0%	0%	0%	0%	0%	0%	0%
Opted Out	0%	0%	0%	0%	0%	0%	0%	0%	0%	0%	0%	0%	0%	0%	0%	0%	0%	0%	0%	0%	0%	0%	0%	0%
Ineligible	0%	0%	0%	0%	0%	0%	0%	0%	0%	0%	0%	0%	0%	0%	0%	0%	0%	0%	0%	0%	0%	0%	0%	0%
Emergency Room Services																								
Graduated	2%	2%	1%	3%	2%	2%	2%	2%	1%	2%	2%	2%	2%	4%	5%	1%	2%	2%	2%	1%	1%	1%	1%	1%
DNF	2%	2%	2%	3%	2%	3%	0%	3%	2%	1%	2%	3%	4%	6%	4%	3%	3%	2%	3%	2%	3%	3%	2%	2%
Opted Out	0%	2%	2%	3%	5%	2%	4%	3%	2%	3%	3%	3%	4%	4%	4%	3%	2%	3%	3%	3%	3%	2%	3%	5%
Ineligible	5%	6%	2%	3%	3%	3%	4%	4%	4%	4%	5%	4%	3%	4%	4%	4%	4%	3%	3%	3%	3%	3%	3%	4%
Medical Inpatient Treatment																								
Graduated	1%	1%	0%	0%	1%	0%	1%	1%	0%	1%	1%	2%	1%	1%	1%	1%	0%	1%	0%	0%	0%	0%	1%	1%
DNF	2%	0%	0%	1%	1%	1%	0%	1%	1%	0%	1%	0%	1%	2%	0%	1%	1%	0%	0%	1%	1%	1%	0%	0%
Opted Out	0%	0%	1%	1%	0%	1%	1%	1%	0%	0%	1%	1%	1%	1%	1%	0%	1%	1%	2%	1%	0%	1%	1%	1%
Ineligible	2%	1%	1%	1%	1%	1%	1%	1%	1%	1%	1%	0%	1%	1%	1%	2%	1%	1%	1%	1%	1%	0%	1%	1%

Pierce County (cont.)		Quarters From Referral to Drug Court																						
		-12	-11	-10	-9	-8	-7	-6	-5	-4	-3	-2	-1	1	2	3	4	5	6	7	8	9	10	11
Mental Health Outpatient Treatment																								
Graduated	0%	0%	0%	0%	0%	0%	0%	0%	0%	0%	0%	0%	0%	0%	0%	0%	0%	0%	0%	0%	0%	0%	0%	1%
DNF	1%	0%	0%	0%	0%	0%	0%	0%	0%	0%	0%	0%	0%	0%	0%	0%	0%	0%	1%	0%	1%	0%	0%	0%
Opted Out	1%	1%	1%	1%	1%	0%	0%	0%	0%	0%	0%	0%	0%	1%	0%	0%	0%	1%	0%	0%	0%	0%	0%	0%
Ineligible	1%	1%	1%	1%	1%	1%	0%	1%	1%	1%	1%	1%	1%	1%	1%	1%	1%	0%	1%	0%	0%	0%	1%	0%
Nursing Home and Congregate Care Services																								
Graduated	0%	0%	0%	0%	0%	0%	0%	0%	0%	0%	0%	0%	0%	1%	0%	0%	0%	0%	0%	0%	0%	0%	0%	0%
DNF	0%	0%	0%	0%	0%	0%	0%	0%	0%	0%	0%	0%	0%	1%	1%	1%	0%	0%	0%	0%	0%	0%	0%	0%
Opted Out	0%	0%	0%	0%	0%	0%	0%	0%	0%	0%	0%	0%	0%	0%	0%	0%	0%	0%	0%	0%	0%	0%	0%	0%
Ineligible	0%	0%	0%	0%	0%	0%	0%	0%	0%	0%	0%	0%	0%	0%	0%	0%	0%	0%	0%	0%	0%	0%	0%	0%
Medical Outpatient Treatment																								
Graduated	16%	15%	14%	15%	13%	14%	15%	14%	14%	15%	16%	15%	21%	26%	25%	20%	21%	19%	18%	14%	15%	15%	14%	13%
DNF	12%	12%	13%	13%	12%	13%	11%	11%	10%	10%	12%	11%	14%	17%	17%	13%	11%	9%	10%	11%	13%	12%	11%	10%
Opted Out	12%	14%	15%	13%	13%	12%	10%	12%	12%	11%	13%	12%	14%	14%	13%	13%	11%	12%	12%	12%	12%	11%	12%	13%
Ineligible	14%	16%	12%	10%	9%	9%	10%	11%	12%	11%	10%	10%	10%	11%	11%	11%	11%	11%	11%	11%	11%	12%	11%	11%
Psychiatric Inpatient Treatment																								
Graduated	0%	0%	0%	0%	0%	0%	0%	0%	0%	1%	0%	0%	0%	0%	0%	0%	0%	0%	0%	0%	0%	0%	0%	0%
DNF	0%	0%	0%	0%	0%	0%	0%	0%	0%	0%	0%	0%	0%	0%	0%	0%	0%	0%	0%	1%	0%	0%	0%	1%
Opted Out	0%	0%	0%	0%	0%	0%	1%	0%	0%	0%	0%	0%	1%	0%	0%	0%	0%	0%	1%	1%	0%	0%	1%	1%
Ineligible	1%	1%	0%	0%	1%	1%	0%	0%	0%	0%	0%	1%	1%	1%	1%	1%	0%	1%	0%	0%	0%	0%	0%	1%

Spokane County
Percent of Each Drug Court Group Receiving Some Medicaid Reimbursement in Each Medicaid Category
For Each Quarter Pre- and Post-Drug Court Referral

Spokane County: Percent Receiving Medicaid Reimbursement By Reimbursement Category and Offender Group																									
Quarters From Referral to Drug Court																									
		-12	-11	-10	-9	-8	-7	-6	-5	-4	-3	-2	-1	1	2	3	4	5	6	7	8	9	10	11	12
Chemical Dependency Outpatient Treatment																									
Graduated		1%	0%	1%	1%	1%	4%	5%	5%	4%	4%	5%	1%	6%	8%	11%	8%	8%	6%	4%	3%	3%	0%	3%	4%
DNF		2%	2%	1%	2%	1%	0%	2%	2%	2%	2%	2%	3%	10%	9%	6%	6%	9%	6%	3%	4%	2%	2%	1%	1%
Opted Out		1%	1%	2%	2%	2%	2%	1%	1%	1%	2%	2%	1%	1%	1%	1%	2%	1%	2%	1%	2%	2%	1%	2%	1%
Ineligible		1%	1%	1%	1%	1%	1%	1%	1%	1%	1%	1%	1%	1%	1%	0%	1%	1%	1%	1%	1%	1%	1%	1%	1%
Detoxification																									
Graduated		0%	0%	0%	0%	0%	0%	0%	0%	0%	0%	0%	0%	0%	0%	0%	0%	0%	0%	0%	0%	0%	0%	0%	0%
DNF		0%	0%	0%	0%	0%	0%	0%	0%	0%	0%	0%	0%	0%	0%	0%	0%	0%	0%	0%	0%	0%	0%	0%	0%
Opted Out		0%	0%	0%	0%	0%	0%	0%	0%	0%	0%	0%	0%	0%	0%	0%	0%	0%	0%	0%	0%	0%	0%	0%	0%
Ineligible		0%	0%	0%	0%	0%	0%	0%	0%	0%	0%	0%	0%	0%	0%	0%	0%	0%	0%	0%	0%	0%	0%	0%	0%
Emergency Room Services																									
Graduated		4%	2%	0%	1%	5%	6%	2%	2%	1%	2%	4%	1%	2%	6%	1%	1%	0%	0%	0%	3%	0%	5%	2%	0%
DNF		1%	1%	1%	0%	2%	3%	3%	3%	3%	3%	3%	3%	3%	3%	2%	3%	4%	4%	5%	2%	3%	0%	0%	1%
Opted Out		2%	3%	2%	3%	3%	2%	3%	4%	2%	2%	4%	4%	4%	4%	3%	4%	3%	2%	3%	2%	4%	2%	3%	3%
Ineligible		2%	2%	2%	2%	2%	2%	2%	2%	3%	2%	3%	3%	3%	3%	2%	2%	2%	2%	3%	2%	3%	3%	3%	2%
Medical Inpatient Treatment																									
Graduated		0%	0%	0%	2%	1%	2%	0%	2%	1%	1%	1%	0%	1%	0%	0%	0%	0%	0%	1%	0%	0%	0%	0%	0%
DNF		1%	0%	1%	0%	2%	1%	1%	1%	1%	0%	0%	0%	2%	2%	1%	2%	1%	3%	1%	1%	0%	1%	3%	1%
Opted Out		0%	1%	0%	1%	1%	1%	1%	1%	1%	1%	1%	1%	1%	1%	1%	1%	1%	1%	2%	1%	1%	0%	2%	1%
Ineligible		0%	1%	1%	0%	0%	0%	0%	0%	1%	0%	1%	1%	1%	0%	1%	0%	0%	1%	1%	0%	1%	1%	0%	0%

Spokane County (cont.)		Quarters From Referral to Drug Court																						
		-12	-11	-10	-9	-8	-7	-6	-5	-4	-3	-2	-1	1	2	3	4	5	6	7	8	9	10	11
Mental Health Outpatient Treatment																								
Graduated	1%	1%	1%	0%	0%	0%	1%	1%	1%	1%	0%	0%	1%	1%	1%	0%	0%	0%	1%	0%	1%	2%	0%	0%
DNF	2%	2%	2%	0%	0%	0%	0%	1%	2%	1%	1%	1%	1%	0%	0%	0%	0%	0%	0%	0%	0%	0%	0%	0%
Opted Out	1%	0%	1%	1%	1%	1%	0%	0%	0%	0%	0%	0%	0%	0%	0%	0%	0%	1%	1%	0%	0%	0%	0%	0%
Ineligible	0%	0%	0%	0%	0%	0%	0%	0%	0%	0%	0%	0%	0%	0%	0%	0%	0%	0%	0%	0%	0%	0%	0%	0%
Nursing Home and Congregate Care Services																								
Graduated	0%	0%	0%	0%	0%	0%	0%	0%	0%	0%	0%	0%	0%	0%	0%	0%	0%	0%	0%	0%	0%	0%	0%	0%
DNF	0%	0%	0%	0%	1%	1%	0%	1%	1%	0%	0%	0%	0%	0%	0%	0%	0%	0%	0%	0%	0%	0%	0%	0%
Opted Out	0%	0%	0%	0%	0%	0%	0%	0%	0%	0%	0%	0%	0%	0%	0%	0%	0%	0%	0%	0%	0%	0%	0%	0%
Ineligible	0%	0%	0%	0%	0%	0%	0%	0%	0%	0%	0%	0%	0%	0%	0%	0%	0%	0%	0%	0%	0%	0%	0%	0%
Medical Outpatient Treatment																								
Graduated	13%	12%	13%	12%	12%	18%	18%	16%	15%	15%	15%	13%	16%	19%	15%	19%	18%	19%	22%	21%	19%	23%	20%	24%
DNF	16%	14%	13%	13%	14%	16%	14%	16%	14%	14%	15%	18%	18%	20%	18%	18%	19%	17%	16%	13%	16%	15%	18%	21%
Opted Out	14%	16%	16%	17%	17%	17%	20%	18%	18%	18%	17%	17%	15%	15%	14%	14%	13%	15%	16%	15%	17%	16%	17%	15%
Ineligible	12%	12%	12%	12%	13%	13%	12%	13%	13%	13%	13%	13%	12%	11%	11%	10%	10%	10%	9%	9%	8%	8%	7%	7%
Psychiatric Inpatient Treatment																								
Graduated	0%	0%	0%	0%	1%	0%	1%	1%	1%	1%	0%	0%	0%	0%	0%	0%	0%	0%	0%	0%	0%	0%	0%	0%
DNF	0%	1%	0%	0%	0%	0%	1%	0%	0%	0%	0%	1%	1%	0%	0%	0%	0%	0%	0%	0%	0%	0%	0%	0%
Opted Out	0%	0%	0%	0%	0%	0%	0%	0%	0%	0%	0%	0%	0%	0%	0%	0%	0%	0%	0%	0%	0%	0%	0%	0%
Ineligible	0%	0%	0%	0%	0%	0%	0%	0%	0%	0%	0%	0%	0%	0%	0%	0%	0%	0%	0%	0%	0%	0%	0%	0%

Thurston County
Percent of Each Drug Court Group Receiving Some Medicaid Reimbursement in Each Medicaid Category
For Each Quarter Pre- and Post-Drug Court Referral

Thurston County: Percent Receiving Medicaid Reimbursement By Reimbursement Category and Offender Group																								
Quarters From Referral to Drug Court																								
	-12	-11	-10	-9	-8	-7	-6	-5	-4	-3	-2	-1	1	2	3	4	5	6	7	8	9	10	11	12
Chemical Dependency Outpatient Treatment																								
Graduated	0%	0%	0%	3%	0%	0%	0%	0%	0%	0%	0%	6%	0%	0%	0%	0%	0%	0%	0%	0%	0%	0%	0%	
DNF	1%	1%	1%	1%	1%	1%	1%	2%	2%	0%	2%	4%	1%	1%	0%	2%	1%	1%	0%	4%	4%	0%	0%	
Opted Out	1%	1%	1%	2%	2%	2%	1%	3%	3%	2%	1%	0%	1%	3%	2%	2%	2%	1%	1%	3%	0%	0%	0%	
Ineligible	0%	0%	3%	3%	3%	0%	0%	0%	0%	0%	0%	0%	0%	3%	0%	3%	0%	0%	0%	0%	0%	0%	0%	
Detoxification																								
Graduated	0%	0%	0%	0%	0%	0%	0%	0%	0%	0%	0%	0%	0%	0%	0%	0%	0%	0%	0%	0%	0%	0%	0%	
DNF	0%	0%	0%	0%	0%	0%	0%	0%	0%	0%	0%	0%	0%	0%	0%	1%	0%	0%	0%	0%	0%	0%	0%	
Opted Out	0%	0%	0%	0%	0%	0%	0%	0%	0%	0%	0%	0%	0%	0%	0%	0%	0%	0%	0%	0%	0%	0%	0%	
Ineligible	0%	0%	0%	0%	0%	0%	0%	0%	0%	0%	0%	0%	0%	0%	0%	0%	0%	0%	0%	0%	0%	0%	0%	
Emergency Room Services																								
Graduated	0%	0%	0%	3%	0%	0%	0%	3%	6%	0%	3%	0%	0%	0%	0%	0%	0%	0%	0%	0%	0%	0%	0%	
DNF	2%	2%	2%	3%	5%	3%	2%	1%	4%	4%	2%	7%	6%	8%	2%	4%	8%	4%	5%	7%	4%	0%	0%	
Opted Out	0%	1%	0%	1%	1%	1%	1%	3%	1%	3%	3%	2%	2%	3%	2%	2%	1%	3%	1%	2%	0%	0%	0%	
Ineligible	5%	3%	5%	3%	3%	3%	8%	3%	3%	8%	5%	3%	0%	0%	3%	6%	0%	4%	0%	0%	0%	0%	14%	
Medical Inpatient Treatment																								
Graduated	0%	0%	0%	0%	0%	0%	0%	0%	0%	0%	0%	0%	0%	0%	0%	0%	0%	0%	0%	5%	0%	0%	0%	
DNF	0%	0%	0%	0%	1%	0%	0%	0%	0%	1%	0%	3%	1%	1%	0%	1%	2%	0%	2%	2%	0%	0%	0%	
Opted Out	0%	0%	0%	0%	0%	0%	0%	1%	1%	0%	1%	1%	1%	1%	0%	1%	0%	0%	0%	0%	0%	0%	0%	
Ineligible	3%	0%	0%	3%	0%	3%	3%	0%	3%	3%	0%	0%	3%	0%	0%	0%	0%	0%	0%	0%	0%	0%	0%	

Thurston County (cont.)		Quarters From Referral to Drug Court																					
		-12	-11	-10	-9	-8	-7	-6	-5	-4	-3	-2	-1	1	2	3	4	5	6	7	8	9	10
Mental Health Outpatient Treatment																							
Graduated	0%	0%	0%	0%	0%	0%	0%	0%	0%	0%	0%	0%	0%	0%	0%	0%	0%	0%	0%	4%	0%	0%	0%
DNF	1%	0%	0%	0%	0%	0%	0%	0%	0%	1%	1%	2%	1%	0%	0%	0%	0%	0%	0%	0%	0%	0%	0%
Opted Out	0%	0%	0%	0%	0%	0%	1%	1%	1%	0%	0%	0%	0%	0%	0%	0%	0%	0%	0%	0%	0%	0%	0%
Ineligible	0%	0%	0%	0%	0%	0%	0%	0%	0%	0%	0%	0%	0%	3%	3%	0%	0%	0%	0%	0%	0%	0%	0%
Nursing Home and Congregate Care Services																							
Graduated	0%	0%	0%	0%	0%	0%	0%	0%	0%	0%	0%	0%	0%	0%	0%	0%	0%	0%	0%	0%	0%	0%	0%
DNF	0%	0%	0%	0%	0%	0%	0%	0%	1%	0%	1%	0%	1%	2%	0%	1%	1%	1%	0%	0%	0%	0%	0%
Opted Out	0%	0%	0%	0%	0%	0%	0%	0%	0%	0%	0%	1%	0%	0%	0%	0%	0%	0%	0%	0%	0%	0%	0%
Ineligible	0%	0%	0%	0%	0%	0%	0%	0%	0%	0%	0%	0%	0%	0%	3%	0%	0%	4%	0%	0%	0%	0%	0%
Medical Outpatient Treatment																							
Graduated	15%	9%	6%	15%	12%	9%	15%	15%	15%	18%	15%	15%	9%	9%	6%	9%	9%	13%	19%	21%	0%	0%	
DNF	14%	15%	14%	16%	15%	18%	19%	15%	15%	16%	14%	15%	17%	20%	10%	14%	16%	16%	18%	27%	17%	0%	
Opted Out	10%	12%	11%	12%	12%	14%	14%	14%	15%	16%	15%	12%	11%	12%	12%	12%	11%	11%	11%	11%	3%	9%	
Ineligible	22%	19%	16%	16%	16%	19%	16%	16%	11%	14%	14%	16%	16%	16%	24%	10%	14%	19%	18%	29%	18%	14%	
Psychiatric Inpatient Treatment																							
Graduated	0%	0%	0%	0%	0%	0%	0%	0%	0%	0%	0%	0%	0%	0%	0%	0%	0%	0%	0%	0%	0%	0%	0%
DNF	1%	0%	0%	1%	1%	0%	1%	1%	1%	1%	0%	1%	0%	1%	0%	0%	0%	0%	0%	0%	0%	0%	0%
Opted Out	0%	0%	0%	0%	0%	0%	0%	0%	0%	0%	0%	0%	0%	0%	0%	0%	0%	0%	0%	0%	0%	0%	0%
Ineligible	0%	0%	0%	0%	3%	0%	0%	0%	0%	3%	0%	0%	0%	0%	0%	0%	3%	0%	0%	0%	0%	0%	0%

Skagit County
 Percent of Each Drug Court Group Receiving Some Medicaid Reimbursement in Each Medicaid Category
 For Each Quarter Pre- and Post-Drug Court Referral

Skagit County: Percent Receiving Medicaid Reimbursement By Reimbursement Category and Offender Group																									
Quarters From Referral to Drug Court																									
		-12	-11	-10	-9	-8	-7	-6	-5	-4	-3	-2	-1	1	2	3	4	5	6	7	8	9	10	11	12
Chemical Dependency Outpatient Treatment																									
Graduated		3%	3%	3%	3%	3%	3%	3%	7%	3%	3%	0%	17%	23%	27%	23%	30%	23%	17%	12%	0%	7%	0%	0%	0%
DNF		4%	4%	4%	4%	8%	8%	8%	8%	4%	13%	13%	13%	17%	25%	17%	4%	5%	10%	6%	0%	0%	0%	0%	0%
Opted Out		0%	0%	0%	0%	0%	0%	0%	0%	0%	0%	0%	0%	0%	0%	0%									
Detoxification																									
Graduated		0%	0%	0%	0%	0%	0%	0%	0%	0%	0%	0%	0%	0%	0%	0%	0%	0%	0%	0%	0%	0%	0%	0%	0%
DNF		0%	0%	0%	0%	0%	0%	0%	0%	0%	0%	0%	0%	0%	0%	0%	0%	0%	0%	0%	0%	0%	0%	0%	0%
Opted Out		0%	0%	0%	0%	0%	0%	0%	0%	0%	0%	0%	0%	0%	0%	0%									
Emergency Room Services																									
Graduated		0%	0%	3%	3%	0%	13%	10%	7%	10%	3%	10%	23%	20%	13%	10%	7%	3%	7%	4%	6%	7%	9%	13%	0%
DNF		8%	8%	8%	8%	13%	0%	8%	8%	4%	4%	8%	13%	4%	21%	8%	4%	9%	5%	11%	20%	10%	33%	17%	0%
Opted Out		0%	0%	0%	0%	0%	0%	0%	0%	0%	0%	0%	0%	0%	0%	0%									
Medical Inpatient Treatment																									
Graduated		0%	0%	0%	3%	3%	3%	7%	3%	7%	0%	3%	3%	3%	3%	3%	7%	0%	0%	0%	0%	0%	0%	0%	0%
DNF		0%	4%	4%	0%	0%	0%	0%	0%	0%	0%	0%	8%	0%	0%	4%	4%	0%	0%	6%	7%	0%	11%	0%	0%
Opted Out		0%	0%	0%	0%	0%	0%	0%	0%	0%	0%	0%	0%	0%	0%	0%									

Skagit County (cont.)		Quarters From Referral to Drug Court																						
		-12	-11	-10	-9	-8	-7	-6	-5	-4	-3	-2	-1	1	2	3	4	5	6	7	8	9	10	11
Mental Health Outpatient Treatment																								
Graduated	0%	0%	0%	0%	0%	0%	0%	0%	3%	3%	0%	0%	7%	10%	0%	0%	0%	3%	0%	0%	7%	9%	0%	0%
DNF	0%	4%	0%	0%	0%	0%	0%	0%	0%	0%	0%	0%	4%	4%	4%	0%	0%	0%	11%	7%	0%	0%	0%	0%
Opted Out	0%	0%	0%	0%	0%	0%	0%	0%	0%	0%	0%	0%	0%	0%	0%									
Nursing Home and Congregate Care Services																								
Graduated	0%	0%	0%	0%	0%	0%	3%	0%	0%	0%	0%	0%	0%	0%	0%	0%	0%	0%	0%	0%	0%	0%	0%	0%
DNF	4%	0%	0%	0%	0%	0%	0%	0%	0%	0%	0%	0%	0%	0%	0%	0%	0%	0%	0%	0%	0%	0%	0%	0%
Opted Out	0%	0%	0%	0%	0%	0%	0%	0%	0%	0%	0%	0%	0%	0%	0%									
Medical Outpatient Treatment																								
Graduated	13%	20%	20%	20%	17%	23%	30%	30%	23%	23%	20%	33%	43%	60%	43%	37%	33%	30%	27%	28%	33%	27%	38%	25%
DNF	17%	17%	17%	25%	25%	25%	29%	33%	29%	38%	38%	29%	25%	38%	33%	29%	23%	30%	22%	40%	40%	22%	33%	25%
Opted Out	0%	0%	0%	0%	0%	0%	0%	0%	0%	0%	0%	0%	0%	0%	0%									
Psychiatric Inpatient Treatment																								
Graduated	0%	0%	0%	0%	0%	0%	0%	0%	0%	0%	0%	0%	0%	0%	0%	0%	0%	0%	0%	0%	0%	0%	0%	0%
DNF	4%	4%	4%	4%	0%	0%	0%	0%	0%	0%	0%	0%	0%	0%	0%	0%	0%	0%	0%	7%	0%	0%	0%	0%
Opted Out	0%	0%	0%	0%	0%	0%	0%	0%	0%	0%	0%	0%	0%	0%	0%									

Kitsap County
 Percent of Each Drug Court Group Receiving Some Medicaid Reimbursement in Each Medicaid Category
 For Each Quarter Pre- and Post-Drug Court Referral

Kitsap County: Percent Receiving Medicaid Reimbursement By Reimbursement Category and Offender Group																								
Quarters From Referral to Drug Court																								
	-12	-11	-10	-9	-8	-7	-6	-5	-4	-3	-2	-1	1	2	3	4	5	6	7	8	9	10	11	12
Chemical Dependency Outpatient Treatment																								
Graduated	0%	0%	0%	0%	0%	0%	0%	0%	0%	0%	0%	0%	0%	0%	0%	0%	0%	0%	0%	0%	0%	0%	0%	0%
DNF	6%	13%	13%	6%	6%	0%	6%	0%	6%	6%	6%	6%	19%	6%	0%	0%	0%	0%	0%	0%	0%	0%	0%	0%
Opted Out	0%	0%	0%	0%	0%	0%	0%	0%	0%	0%	0%	0%	0%	0%	0%	0%	0%	0%	0%	0%	0%	0%	0%	0%
Ineligible	0%	0%	0%	0%	0%	0%	0%	0%	0%	0%	0%	0%	0%	0%	0%	0%	0%	0%	0%	0%	0%	0%	0%	0%
Detoxification																								
Graduated	0%	0%	0%	0%	0%	0%	0%	0%	0%	0%	0%	0%	0%	0%	0%	0%	0%	0%	0%	0%	0%	0%	0%	0%
DNF	0%	0%	0%	0%	0%	0%	0%	0%	0%	0%	0%	0%	0%	0%	0%	0%	0%	0%	0%	0%	0%	0%	0%	0%
Opted Out	0%	0%	0%	0%	0%	0%	0%	0%	0%	0%	0%	0%	0%	0%	0%	0%	0%	0%	0%	0%	0%	0%	0%	0%
Ineligible	0%	0%	0%	0%	0%	0%	0%	0%	0%	0%	0%	0%	0%	0%	0%	0%	0%	0%	0%	0%	0%	0%	0%	0%
Emergency Room Services																								
Graduated	0%	0%	0%	0%	0%	0%	0%	0%	0%	0%	0%	0%	0%	0%	17%	0%	0%	0%	0%	0%	0%	0%	0%	0%
DNF	0%	0%	0%	0%	0%	0%	0%	0%	6%	0%	0%	0%	0%	6%	0%	0%	11%	14%	20%	0%	0%	0%	0%	0%
Opted Out	0%	0%	0%	0%	0%	0%	0%	0%	0%	0%	0%	0%	0%	0%	0%	0%	0%	0%	0%	0%	0%	0%	0%	0%
Ineligible	0%	0%	0%	0%	0%	0%	0%	0%	0%	0%	0%	0%	0%	0%	0%	0%	0%	0%	0%	0%	0%	0%	0%	0%
Medical Inpatient Treatment																								
Graduated	0%	0%	0%	0%	0%	0%	0%	0%	0%	0%	0%	0%	0%	0%	0%	0%	0%	0%	0%	0%	0%	0%	0%	0%
DNF	6%	0%	0%	0%	0%	0%	0%	0%	0%	0%	0%	0%	0%	6%	0%	0%	0%	0%	0%	0%	0%	0%	0%	0%
Opted Out	0%	0%	0%	0%	0%	0%	0%	0%	0%	0%	0%	0%	0%	0%	0%	0%	0%	0%	0%	0%	0%	0%	0%	0%
Ineligible	0%	0%	0%	0%	0%	0%	0%	0%	0%	0%	0%	0%	0%	0%	0%	0%	0%	0%	0%	0%	0%	0%	0%	0%

Kitsap County (cont.)		Quarters From Referral to Drug Court																						
		-12	-11	-10	-9	-8	-7	-6	-5	-4	-3	-2	-1	1	2	3	4	5	6	7	8	9	10	11
Mental Health Outpatient Treatment																								
Graduated	0%	0%	0%	0%	0%	0%	0%	0%	0%	0%	0%	0%	0%	0%	0%	0%	0%	0%	0%	0%	0%	0%	0%	0%
DNF	0%	0%	0%	0%	0%	0%	0%	0%	0%	0%	0%	0%	0%	0%	0%	0%	0%	11%	14%	0%				
Opted Out	0%	0%	0%	0%	0%	0%	0%	0%	0%	0%	0%	0%	0%	0%	0%	0%	0%	0%	0%					
Ineligible	0%	0%	0%	0%	0%	0%	0%	0%	0%	0%	0%	0%	0%	0%	0%	0%	0%	0%	0%					
Nursing Home and Congregate Care Services																								
Graduated	0%	0%	0%	0%	0%	0%	0%	0%	0%	0%	0%	0%	0%	0%	0%	0%	0%	0%	0%	0%	0%	0%	0%	0%
DNF	0%	0%	0%	0%	0%	0%	0%	0%	0%	0%	0%	0%	0%	0%	0%	0%	0%	0%	0%	0%	0%	0%	0%	0%
Opted Out	0%	0%	0%	0%	0%	0%	0%	0%	0%	0%	0%	0%	0%	0%	0%	0%	0%	0%	0%					
Ineligible	0%	0%	0%	0%	0%	0%	0%	0%	0%	0%	0%	0%	0%	0%	0%	0%	0%	0%	0%					
Medical Outpatient Treatment																								
Graduated	0%	0%	0%	0%	0%	0%	0%	0%	0%	0%	0%	0%	0%	33%	17%	0%	0%	0%	0%					
DNF	19%	25%	25%	25%	25%	25%	31%	25%	31%	31%	31%	31%	31%	44%	20%	9%	22%	14%	20%					
Opted Out	0%	0%	0%	0%	0%	0%	0%	0%	0%	0%	0%	0%	0%	0%	0%	0%	0%	0%						
Ineligible	0%	0%	0%	0%	0%	0%	0%	0%	0%	33%	33%	33%	33%	33%	0%	0%	0%	0%						
Psychiatric Inpatient Treatment																								
Graduated	0%	0%	0%	0%	0%	0%	0%	0%	0%	0%	0%	0%	0%	0%	0%	0%	0%	0%	0%	0%	0%	0%	0%	0%
DNF	0%	0%	0%	0%	0%	0%	0%	0%	0%	0%	0%	0%	0%	0%	0%	0%	9%	0%	0%	0%				
Opted Out	0%	0%	0%	0%	0%	0%	0%	0%	0%	0%	0%	0%	0%	0%	0%	0%	0%	0%						
Ineligible	0%	0%	0%	0%	0%	0%	0%	0%	0%	0%	0%	0%	0%	0%	0%	0%	0%	0%						

King County
Mean Amount of Medicaid Reimbursement for Each Drug Court Group for Each Medicaid Category
For Each Quarter Pre- and Post-Drug Court Referral

King County: Mean Amount of Medicaid Reimbursement Per Participant By Reimbursement Category and Participant Group																								
Quarters From Referral to Drug Court																								
	-12	-11	-10	-9	-8	-7	-6	-5	-4	-3	-2	-1	1	2	3	4	5	6	7	8	9	10	11	12
Chemical Dependency Outpatient Treatment																								
Graduated	7	16	13	17	17	10	9	8	7	10	10	8	21	31	26	32	25	26	32	16	15	22	22	23
DNF	16	14	16	18	18	18	17	15	16	14	12	12	21	23	17	14	15	15	18	23	23	18	20	18
Opted Out	4	5	6	4	6	5	6	7	5	6	6	5	8	6	5	6	6	6	8	7	8	11	12	10
Ineligible	10	13	4	2	4	5	6	6	5	5	4	4	4	5	1	4	6	22	38	27	5	6	10	13
Detoxification																								
Graduated	\$0	\$0	\$0	\$0	\$0	\$0	\$0	\$10	\$0	\$0	\$0	\$0	\$0	\$0	\$0	\$0	\$0	\$0	\$0	\$0	\$0	\$0	\$0	\$0
DNF	\$0	\$0	\$0	\$0	\$0	\$0	\$0	\$0	\$0	\$0	\$2	\$0	\$0	\$0	\$0	\$0	\$0	\$0	\$0	\$0	\$0	\$0	\$0	\$0
Opted Out	\$0	\$0	\$0	\$0	\$1	\$0	\$0	\$0	\$0	\$0	\$1	\$0	\$0	\$0	\$0	\$3	\$2	\$2	\$0	\$0	\$0	\$0	\$0	\$0
Ineligible	\$0	\$0	\$0	\$0	\$0	\$0	\$0	\$0	\$0	\$0	\$0	\$0	\$3	\$0	\$0	\$0	\$0	\$0	\$0	\$0	\$0	\$0	\$0	\$0
Emergency Room Services																								
Graduated	\$36	\$35	\$7	\$24	\$13	\$49	\$282	\$45	\$45	\$38	\$48	\$73	\$23	\$16	\$27	\$5	\$55	\$64	\$36	\$99	\$310	\$89	\$44	\$12
DNF	\$45	\$58	\$69	\$70	\$48	\$27	\$61	\$86	\$78	\$127	\$117	\$112	\$115	\$82	\$90	\$63	\$131	\$57	\$65	\$59	\$48	\$69	\$65	\$64
Opted Out	\$24	\$53	\$55	\$32	\$21	\$55	\$34	\$37	\$53	\$58	\$46	\$48	\$74	\$66	\$83	\$53	\$58	\$47	\$34	\$51	\$59	\$50	\$32	\$48
Ineligible	\$81	\$165	\$68	\$43	\$115	\$60	\$45	\$30	\$52	\$108	\$70	\$79	\$67	\$51	\$44	\$63	\$133	\$16	\$39	\$38	\$70	\$12	\$103	\$3
Medical Inpatient Treatment																								
Graduated	\$5	\$11	\$45	\$7	\$21	\$73	\$90	\$20	\$31	\$8	\$29	\$12	\$20	\$4	\$0	\$6	\$46	\$17	\$17	\$5	\$38	\$66	\$1	\$26
DNF	\$33	\$31	\$38	\$29	\$23	\$2	\$46	\$6	\$52	\$38	\$33	\$21	\$56	\$49	\$88	\$46	\$135	\$65	\$42	\$186	\$25	\$43	\$56	\$50
Opted Out	\$14	\$53	\$19	\$57	\$15	\$27	\$31	\$38	\$27	\$13	\$28	\$32	\$44	\$57	\$25	\$25	\$44	\$32	\$21	\$27	\$23	\$17	\$25	\$51
Ineligible	\$3	\$37	\$58	\$11	\$33	\$110	\$6	\$13	\$91	\$13	\$12	\$28	\$9	\$59	\$106	\$20	\$118	\$22	\$24	\$22	\$7	\$16	\$2	\$1

King County (cont.)		Quarters From Referral to Drug Court																							
		-12	-11	-10	-9	-8	-7	-6	-5	-4	-3	-2	-1	1	2	3	4	5	6	7	8	9	10	11	12
Mental Health Outpatient Treatment																									
Graduated	\$9	\$14	\$9	\$33	\$10	\$10	\$2	\$4	\$2	\$2	\$1	\$0	\$2	\$0	\$2	\$2	\$2	\$2	\$1	\$1	\$1	\$1	\$0	\$1	
DNF	\$6	\$7	\$6	\$4	\$8	\$11	\$8	\$6	\$5	\$6	\$7	\$4	\$3	\$1	\$3	\$1	\$1	\$1	\$1	\$1	\$1	\$2	\$2	\$2	
Opted Out	\$9	\$10	\$8	\$3	\$7	\$7	\$11	\$6	\$4	\$4	\$4	\$6	\$2	\$2	\$2	\$1	\$1	\$1	\$1	\$1	\$1	\$1	\$18	\$1	
Ineligible	\$3	\$2	\$1	\$4	\$3	\$2	\$6	\$3	\$6	\$6	\$3	\$3	\$4	\$2	\$2	\$0	\$0	\$0	\$0	\$0	\$0	\$0	\$1	\$0	
Nursing Home and Congregate Care Services																									
Graduated	\$0	\$0	\$0	\$0	\$0	\$0	\$16	\$18	\$0	\$0	\$0	\$28	\$3	\$0	\$0	\$0	\$0	\$0	\$0	\$21	\$0	\$48	\$19	\$0	
DNF	\$0	\$1	\$0	\$0	\$0	\$0	\$1	\$17	\$0	\$0	\$0	\$0	\$0	\$0	\$0	\$3	\$0	\$4	\$8	\$3	\$16	\$31	\$24	\$45	
Opted Out	\$0	\$0	\$0	\$0	\$0	\$6	\$8	\$8	\$12	\$9	\$10	\$5	\$2	\$15	\$24	\$17	\$21	\$33	\$57	\$36	\$25	\$19	\$10	\$7	
Ineligible	\$0	\$0	\$0	\$0	\$20	\$23	\$0	\$0	\$8	\$2	\$0	\$0	\$0	\$0	\$0	\$10	\$10	\$36	\$0	\$14	\$5	\$0	\$0	\$0	
Medical Outpatient Treatment																									
Graduated	\$50	\$98	\$46	\$48	\$54	\$48	\$64	\$54	\$57	\$50	\$42	\$66	\$71	\$130	\$81	\$82	\$130	\$113	\$91	\$102	\$85	\$118	\$107	\$121	
DNF	\$69	\$82	\$78	\$71	\$76	\$63	\$71	\$77	\$70	\$79	\$92	\$94	\$91	\$107	\$105	\$103	\$103	\$105	\$157	\$115	\$125	\$115	\$108	\$121	
Opted Out	\$46	\$54	\$49	\$59	\$53	\$48	\$60	\$68	\$72	\$76	\$79	\$89	\$86	\$95	\$88	\$87	\$82	\$88	\$101	\$102	\$102	\$92	\$102	\$104	
Ineligible	\$59	\$56	\$72	\$51	\$68	\$66	\$56	\$47	\$55	\$94	\$59	\$65	\$53	\$61	\$63	\$72	\$55	\$72	\$91	\$80	\$50	\$52	\$60	\$46	
Psychiatric Inpatient Treatment																									
Graduated	\$31	\$0	\$0	\$0	\$0	\$0	\$10	\$2	\$1	\$19	\$0	\$29	\$0	\$0	\$2	\$0	\$20	\$0	\$0	\$17	\$0	\$0	\$0	\$1	
DNF	\$18	\$0	\$0	\$11	\$20	\$20	\$26	\$54	\$31	\$15	\$34	\$9	\$34	\$42	\$26	\$1	\$9	\$22	\$17	\$14	\$4	\$1	\$1	\$17	
Opted Out	\$0	\$1	\$5	\$8	\$3	\$4	\$14	\$3	\$7	\$10	\$13	\$12	\$45	\$7	\$17	\$14	\$20	\$8	\$7	\$2	\$9	\$1	\$13	\$15	
Ineligible	\$12	\$31	\$9	\$0	\$35	\$13	\$3	\$27	\$45	\$9	\$3	\$13	\$11	\$35	\$46	\$15	\$20	\$0	\$2	\$1	\$7	\$0	\$1	\$0	

Pierce County
Mean Amount of Medicaid Reimbursement for Each Drug Court Group for Each Medicaid Category
For Each Quarter Pre- and Post-Drug Court Referral

Pierce County: Mean Amount of Medicaid Reimbursement Per Participant By Reimbursement Category and Participant Group																								
Quarters From Referral to Drug Court																								
	-12	-11	-10	-9	-8	-7	-6	-5	-4	-3	-2	-1	1	2	3	4	5	6	7	8	9	10	11	12
Chemical Dependency Outpatient Treatment																								
Graduated	6	2	3	38	4	2	3	4	4	4	2	1	8	23	30	18	19	11	12	6	8	6	1	5
DNF	8	10	9	10	10	10	12	10	6	5	4	3	8	3	6	7	6	21	7	7	8	4	7	5
Opted Out	2	2	2	6	9	16	8	6	4	3	0	3	4	4	6	11	14	6	16	16	9	11	10	14
Ineligible	4	4	3	7	4	10	7	6	5	3	2	3	3	4	7	8	12	12	13	14	12	10	11	11
Detoxification																								
Graduated	\$0	\$0	\$0	\$0	\$0	\$0	\$0	\$0	\$0	\$0	\$0	\$0	\$0	\$0	\$0	\$0	\$0	\$0	\$0	\$0	\$0	\$0	\$0	\$0
DNF	\$0	\$0	\$0	\$0	\$0	\$0	\$0	\$0	\$0	\$0	\$0	\$3	\$0	\$0	\$0	\$0	\$0	\$0	\$0	\$0	\$0	\$0	\$0	\$0
Opted Out	\$0	\$0	\$0	\$0	\$0	\$0	\$0	\$0	\$0	\$0	\$0	\$0	\$0	\$0	\$0	\$0	\$0	\$0	\$0	\$0	\$0	\$0	\$0	\$0
Ineligible	\$0	\$0	\$0	\$0	\$0	\$0	\$0	\$0	\$0	\$0	\$0	\$0	\$0	\$0	\$0	\$0	\$0	\$0	\$0	\$0	\$6	\$0	\$0	\$0
Emergency Room Services																								
Graduated	\$31	\$46	\$1	\$9	\$50	\$4	\$8	\$14	\$2	\$22	\$13	\$41	\$7	\$11	\$17	\$9	\$24	\$32	\$28	\$2	\$4	\$22	\$36	\$35
DNF	\$106	\$12	\$10	\$15	\$20	\$18	\$3	\$43	\$22	\$7	\$44	\$49	\$45	\$124	\$227	\$61	\$58	\$14	\$37	\$3	\$50	\$9	\$16	\$10
Opted Out	\$0	\$36	\$3	\$11	\$27	\$28	\$31	\$35	\$10	\$100	\$34	\$6	\$55	\$55	\$17	\$52	\$11	\$43	\$68	\$33	\$18	\$45	\$29	\$126
Ineligible	\$50	\$45	\$19	\$34	\$45	\$34	\$39	\$60	\$33	\$57	\$35	\$64	\$37	\$57	\$83	\$89	\$60	\$49	\$24	\$38	\$43	\$39	\$24	\$93
Medical Inpatient Treatment																								
Graduated	\$44	\$3	\$0	\$0	\$1	\$30	\$34	\$8	\$0	\$3	\$22	\$25	\$0	\$33	\$11	\$13	\$0	\$4	\$1	\$0	\$0	\$0	\$1	\$1
DNF	\$39	\$2	\$0	\$5	\$9	\$1	\$5	\$36	\$14	\$11	\$10	\$2	\$62	\$13	\$6	\$97	\$9	\$0	\$0	\$1	\$28	\$18	\$0	\$0
Opted Out	\$0	\$5	\$16	\$11	\$11	\$16	\$1	\$2	\$12	\$0	\$44	\$38	\$39	\$32	\$6	\$4	\$26	\$16	\$23	\$18	\$1	\$17	\$7	\$13
Ineligible	\$66	\$21	\$55	\$4	\$14	\$20	\$28	\$25	\$30	\$31	\$16	\$1	\$32	\$87	\$51	\$63	\$12	\$19	\$119	\$4	\$4	\$2	\$27	\$128

Pierce County (cont.)

Quarters From Referral to Drug Court

	-12	-11	-10	-9	-8	-7	-6	-5	-4	-3	-2	-1	1	2	3	4	5	6	7	8	9	10	11	12
Mental Health Outpatient Treatment																								
Graduated	\$0	\$0	\$0	\$0	\$0	\$0	\$0	\$1	\$0	\$0	\$0	\$0	\$0	\$0	\$0	\$0	\$0	\$0	\$0	\$0	\$0	\$0	\$0	\$0
DNF	\$0	\$0	\$0	\$13	\$0	\$0	\$0	\$0	\$0	\$0	\$0	\$0	\$0	\$0	\$0	\$0	\$0	\$0	\$6	\$0	\$0	\$0	\$0	\$0
Opted Out	\$1	\$1	\$18	\$4	\$2	\$0	\$0	\$0	\$0	\$0	\$0	\$0	\$0	\$7	\$0	\$0	\$11	\$8	\$8	\$0	\$0	\$0	\$0	\$0
Ineligible	\$7	\$9	\$34	\$29	\$9	\$10	\$13	\$24	\$34	\$9	\$7	\$3	\$11	\$10	\$25	\$28	\$8	\$0	\$1	\$0	\$0	\$0	\$0	\$0
Nursing Home and Congregate Care Services																								
Graduated	\$0	\$0	\$0	\$0	\$0	\$0	\$0	\$0	\$0	\$0	\$20	\$2	\$0	\$0	\$0	\$0	\$0	\$0	\$0	\$0	\$0	\$0	\$0	\$0
DNF	\$0	\$0	\$0	\$0	\$0	\$0	\$4	\$5	\$1	\$0	\$0	\$0	\$0	\$29	\$30	\$60	\$53	\$0	\$0	\$0	\$5	\$29	\$0	\$0
Opted Out	\$0	\$0	\$0	\$0	\$0	\$4	\$4	\$0	\$0	\$0	\$0	\$0	\$0	\$0	\$0	\$0	\$0	\$11	\$0	\$0	\$0	\$0	\$0	\$0
Ineligible	\$0	\$0	\$0	\$0	\$0	\$0	\$0	\$0	\$0	\$10	\$6	\$0	\$0	\$0	\$13	\$8	\$7	\$0	\$0	\$0	\$1	\$4	\$1	\$5
Medical Outpatient Treatment																								
Graduated	\$53	\$48	\$39	\$45	\$66	\$61	\$74	\$53	\$53	\$77	\$61	\$94	\$78	\$130	\$160	\$157	\$147	\$155	\$139	\$127	\$132	\$119	\$116	\$96
DNF	\$62	\$44	\$43	\$44	\$49	\$48	\$39	\$47	\$77	\$38	\$45	\$46	\$46	\$99	\$74	\$84	\$62	\$45	\$60	\$55	\$91	\$66	\$89	\$65
Opted Out	\$38	\$50	\$66	\$48	\$54	\$64	\$69	\$58	\$47	\$60	\$59	\$57	\$50	\$53	\$70	\$72	\$77	\$53	\$81	\$70	\$59	\$56	\$59	\$68
Ineligible	\$70	\$83	\$48	\$42	\$35	\$35	\$45	\$42	\$74	\$58	\$100	\$68	\$61	\$87	\$79	\$80	\$74	\$81	\$75	\$89	\$73	\$71	\$81	\$89
Psychiatric Inpatient Treatment																								
Graduated	\$0	\$0	\$0	\$0	\$0	\$0	\$13	\$0	\$0	\$1	\$25	\$1	\$0	\$0	\$2	\$0	\$0	\$0	\$0	\$0	\$0	\$1	\$11	\$0
DNF	\$1	\$0	\$0	\$9	\$0	\$6	\$0	\$8	\$1	\$5	\$0	\$0	\$1	\$11	\$1	\$7	\$0	\$9	\$4	\$6	\$0	\$0	\$0	\$20
Opted Out	\$0	\$0	\$0	\$11	\$1	\$5	\$11	\$12	\$4	\$1	\$0	\$0	\$3	\$0	\$10	\$0	\$0	\$5	\$21	\$2	\$1	\$13	\$8	\$4
Ineligible	\$32	\$3	\$10	\$2	\$17	\$13	\$0	\$9	\$18	\$13	\$14	\$20	\$10	\$16	\$21	\$20	\$11	\$9	\$7	\$1	\$7	\$0	\$54	\$8

Spokane County
Mean Amount of Medicaid Reimbursement for Each Drug Court Group for Each Medicaid Category
For Each Quarter Pre- and Post-Drug Court Referral

Spokane County: Mean Amount of Medicaid Reimbursement Per Participant By Reimbursement Category and Participant Group																									
Quarters From Referral to Drug Court																									
	-12	-11	-10	-9	-8	-7	-6	-5	-4	-3	-2	-1	1	2	3	4	5	6	7	8	9	10	11	12	
Chemical Dependency Outpatient Treatment																									
Graduated	4	0	3	2	2	4	13	17	12	16	16	2	48	94	88	56	38	36	10	18	7	0	7	12	
DNF	3	5	2	4	0	0	1	2	9	5	8	10	77	63	51	33	39	27	25	22	15	11	10	12	
Opted Out	5	7	7	15	9	7	5	5	4	8	7	6	3	3	4	6	7	10	4	6	12	5	4	3	
Ineligible	4	5	10	4	3	2	4	2	2	2	3	2	1	6	7	1	2	3	3	3	11	7	4	2	
Detoxification																									
Graduated	\$0	\$0	\$0	\$0	\$0	\$0	\$0	\$0	\$0	\$0	\$0	\$0	\$0	\$0	\$0	\$0	\$0	\$0	\$0	\$0	\$0	\$0	\$0	\$0	\$0
DNF	\$0	\$0	\$0	\$0	\$0	\$0	\$0	\$0	\$0	\$0	\$0	\$0	\$0	\$0	\$0	\$0	\$0	\$0	\$0	\$0	\$0	\$0	\$0	\$0	\$0
Opted Out	\$0	\$0	\$0	\$0	\$0	\$0	\$0	\$0	\$0	\$0	\$0	\$0	\$0	\$0	\$0	\$0	\$0	\$0	\$0	\$0	\$0	\$0	\$0	\$0	\$0
Ineligible	\$0	\$0	\$0	\$0	\$0	\$0	\$0	\$0	\$0	\$0	\$0	\$0	\$0	\$0	\$0	\$0	\$0	\$0	\$0	\$0	\$0	\$0	\$0	\$0	\$0
Emergency Room Services																									
Graduated	\$8	\$16	\$0	\$139	\$30	\$70	\$36	\$100	\$74	\$29	\$15	\$1	\$100	\$5	\$4	\$1	\$0	\$0	\$0	\$13	\$0	\$6	\$1	\$0	
DNF	\$0	\$36	\$34	\$0	\$85	\$4	\$11	\$5	\$44	\$6	\$4	\$5	\$41	\$3	\$3	\$2	\$36	\$37	\$9	\$65	\$5	\$0	\$0	\$39	
Opted Out	\$24	\$13	\$12	\$22	\$8	\$35	\$44	\$23	\$7	\$24	\$29	\$16	\$238	\$49	\$20	\$38	\$24	\$15	\$71	\$28	\$24	\$28	\$56	\$11	
Ineligible	\$8	\$10	\$28	\$13	\$6	\$21	\$13	\$6	\$32	\$13	\$71	\$38	\$173	\$10	\$37	\$111	\$25	\$24	\$13	\$14	\$33	\$118	\$14	\$139	
Medical Inpatient Treatment																									
Graduated	\$0	\$0	\$0	\$81	\$1	\$7	\$0	\$17	\$142	\$54	\$44	\$0	\$7	\$0	\$0	\$0	\$0	\$0	\$45	\$0	\$0	\$0	\$0	\$0	
DNF	\$30	\$0	\$7	\$0	\$4	\$6	\$20	\$97	\$2	\$0	\$0	\$0	\$33	\$34	\$144	\$42	\$1	\$17	\$11	\$1	\$0	\$30	\$76	\$1	
Opted Out	\$10	\$52	\$24	\$8	\$76	\$24	\$5	\$31	\$58	\$13	\$21	\$18	\$9	\$98	\$3	\$37	\$79	\$99	\$23	\$20	\$5	\$11	\$34	\$28	
Ineligible	\$0	\$19	\$33	\$1	\$11	\$4	\$9	\$4	\$11	\$9	\$6	\$6	\$34	\$2	\$19	\$10	\$5	\$45	\$16	\$3	\$62	\$1	\$2	\$10	

Spokane County (cont.)		Quarters From Referral to Drug Court																							
		-12	-11	-10	-9	-8	-7	-6	-5	-4	-3	-2	-1	1	2	3	4	5	6	7	8	9	10	11	12
Mental Health Outpatient Treatment																									
Graduated	\$5	\$6	\$2	\$0	\$0	\$0	\$1	\$14	\$11	\$1	\$0	\$0	\$1	\$2	\$0	\$0	\$0	\$0	\$0	\$0	\$1	\$1	\$0	\$0	
DNF	\$5	\$3	\$8	\$0	\$0	\$0	\$0	\$1	\$1	\$1	\$1	\$1	\$0	\$0	\$0	\$0	\$0	\$0	\$0	\$0	\$0	\$0	\$0	\$0	
Opted Out	\$5	\$2	\$4	\$2	\$3	\$0	\$1	\$1	\$1	\$0	\$0	\$0	\$0	\$0	\$0	\$0	\$0	\$1	\$0	\$0	\$0	\$0	\$0	\$0	
Ineligible	\$0	\$1	\$0	\$0	\$0	\$1	\$2	\$2	\$0	\$0	\$0	\$0	\$0	\$14	\$0	\$0	\$0	\$0	\$18	\$0	\$0	\$0	\$0	\$0	
Nursing Home and Congregate Care Services																									
Graduated	\$0	\$0	\$0	\$0	\$0	\$0	\$0	\$0	\$0	\$0	\$0	\$0	\$0	\$0	\$0	\$0	\$0	\$0	\$0	\$0	\$0	\$0	\$0	\$0	
DNF	\$0	\$0	\$0	\$0	\$17	\$31	\$0	\$44	\$9	\$0	\$0	\$0	\$0	\$0	\$0	\$0	\$0	\$0	\$0	\$0	\$0	\$0	\$0	\$0	
Opted Out	\$0	\$0	\$0	\$0	\$0	\$0	\$0	\$0	\$0	\$0	\$0	\$0	\$0	\$0	\$0	\$1	\$0	\$0	\$0	\$1	\$0	\$0	\$0	\$0	
Ineligible	\$0	\$0	\$0	\$0	\$0	\$0	\$0	\$0	\$1	\$0	\$0	\$0	\$0	\$3	\$5	\$5	\$0	\$1	\$7	\$0	\$0	\$0	\$0	\$0	
Medical Outpatient Treatment																									
Graduated	\$63	\$42	\$33	\$37	\$37	\$52	\$56	\$94	\$73	\$83	\$58	\$74	\$48	\$85	\$181	\$104	\$118	\$135	\$107	\$95	\$187	\$130	\$127	\$119	
DNF	\$50	\$30	\$83	\$43	\$84	\$61	\$57	\$80	\$57	\$75	\$62	\$77	\$138	\$75	\$131	\$119	\$79	\$74	\$107	\$94	\$68	\$73	\$101	\$89	
Opted Out	\$83	\$79	\$77	\$94	\$102	\$98	\$100	\$132	\$101	\$121	\$91	\$85	\$82	\$94	\$128	\$89	\$105	\$94	\$113	\$112	\$157	\$135	\$157	\$168	
Ineligible	\$47	\$57	\$52	\$50	\$57	\$52	\$63	\$64	\$65	\$63	\$68	\$64	\$57	\$52	\$63	\$54	\$64	\$60	\$68	\$50	\$40	\$55	\$46	\$49	
Psychiatric Inpatient Treatment																									
Graduated	\$0	\$0	\$0	\$0	\$54	\$0	\$94	\$107	\$223	\$13	\$0	\$0	\$0	\$0	\$0	\$0	\$0	\$0	\$0	\$0	\$0	\$0	\$0	\$0	
DNF	\$0	\$3	\$0	\$0	\$0	\$0	\$99	\$0	\$0	\$0	\$0	\$26	\$29	\$0	\$0	\$0	\$0	\$0	\$0	\$0	\$0	\$0	\$0	\$0	
Opted Out	\$4	\$3	\$0	\$0	\$7	\$0	\$0	\$0	\$0	\$0	\$6	\$0	\$0	\$2	\$4	\$0	\$0	\$0	\$0	\$0	\$0	\$0	\$0	\$0	
Ineligible	\$2	\$1	\$6	\$2	\$0	\$18	\$1	\$7	\$5	\$8	\$12	\$3	\$5	\$6	\$6	\$12	\$4	\$0	\$0	\$5	\$25	\$0	\$0	\$0	

Thurston County
Mean Amount of Medicaid Reimbursement for Each Drug Court Group for Each Medicaid Category
For Each Quarter Pre- and Post-Drug Court Referral

Thurston County: Mean Amount of Medicaid Reimbursement Per Participant By Reimbursement Category and Participant Group																								
Quarters From Referral to Drug Court																								
	-12	-11	-10	-9	-8	-7	-6	-5	-4	-3	-2	-1	1	2	3	4	5	6	7	8	9	10	11	12
Chemical Dependency Outpatient Treatment																								
Graduated	0	0	0	2	0	0	0	0	0	0	0	5	0	0	0	0	0	0	0	0	0	0	0	
DNF	8	1	1	13	10	2	2	2	2	0	1	12	2	2	0	11	1	1	0	24	16	0		
Opted Out	3	3	3	8	13	6	7	7	10	17	2	1	7	12	4	6	3	0	2	7	0	0		
Ineligible	0	0	9	5	2	0	0	0	0	0	0	0	0	2	0	11	0	0	0	0	0	0		
Detoxification																								
Graduated	\$0	\$0	\$0	\$0	\$0	\$0	\$0	\$0	\$0	\$0	\$0	\$0	\$0	\$0	\$0	\$0	\$0	\$0	\$0	\$0	\$0	\$0	\$0	
DNF	\$0	\$0	\$0	\$0	\$0	\$0	\$0	\$0	\$0	\$0	\$0	\$0	\$0	\$0	\$0	\$0	\$19	\$0	\$0	\$0	\$0	\$0	\$0	
Opted Out	\$0	\$0	\$0	\$0	\$0	\$0	\$0	\$0	\$0	\$0	\$0	\$0	\$0	\$0	\$0	\$0	\$0	\$0	\$0	\$0	\$0	\$0	\$0	
Ineligible	\$0	\$0	\$0	\$0	\$0	\$0	\$0	\$0	\$0	\$0	\$0	\$0	\$0	\$0	\$0	\$0	\$0	\$0	\$0	\$0	\$0	\$0	\$0	
Emergency Room Services																								
Graduated	\$0	\$0	\$0	\$9	\$0	\$0	\$0	\$8	\$23	\$0	\$2	\$0	\$0	\$0	\$0	\$0	\$0	\$0	\$0	\$0	\$0	\$0	\$0	
DNF	\$16	\$4	\$12	\$11	\$11	\$1	\$2	\$7	\$15	\$27	\$4	\$58	\$19	\$30	\$3	\$19	\$209	\$7	\$5	\$28	\$11	\$0		
Opted Out	\$0	\$11	\$1	\$1	\$9	\$9	\$3	\$23	\$4	\$13	\$12	\$24	\$109	\$19	\$32	\$5	\$0	\$9	\$11	\$1	\$0	\$0		
Ineligible	\$21	\$17	\$18	\$2	\$42	\$15	\$30	\$22	\$91	\$75	\$4	\$10	\$0	\$0	\$8	\$7	\$0	\$3	\$0	\$0	\$0	\$0	\$22	
Medical Inpatient Treatment																								
Graduated	\$0	\$0	\$0	\$0	\$0	\$0	\$0	\$0	\$0	\$0	\$0	\$0	\$0	\$0	\$0	\$0	\$0	\$0	\$0	\$0	\$153	\$0	\$0	
DNF	\$0	\$0	\$0	\$0	\$53	\$0	\$0	\$0	\$0	\$1	\$0	\$17	\$69	\$38	\$0	\$103	\$21	\$0	\$62	\$133	\$0	\$0		
Opted Out	\$0	\$0	\$3	\$0	\$0	\$14	\$0	\$5	\$1	\$0	\$441	\$11	\$13	\$2	\$3	\$45	\$0	\$0	\$0	\$0	\$0	\$0		
Ineligible	\$21	\$0	\$0	\$21	\$0	\$1	\$21	\$0	\$5	\$8	\$0	\$0	\$21	\$0	\$0	\$0	\$0	\$0	\$0	\$0	\$0	\$0		

\$0

Thurston County (cont.)		Quarters From Referral to Drug Court																					
		-12	-11	-10	-9	-8	-7	-6	-5	-4	-3	-2	-1	1	2	3	4	5	6	7	8	9	10
Mental Health Outpatient Treatment																							
Graduated	\$0	\$0	\$0	\$0	\$0	\$0	\$0	\$0	\$0	\$0	\$0	\$0	\$0	\$0	\$0	\$0	\$0	\$0	\$0	\$3	\$0	\$0	\$0
DNF	\$6	\$0	\$0	\$0	\$0	\$0	\$0	\$0	\$0	\$1	\$0	\$1	\$0	\$0	\$0	\$0	\$0	\$0	\$0	\$0	\$0	\$0	\$0
Opted Out	\$0	\$0	\$0	\$0	\$0	\$0	\$1	\$0	\$0	\$0	\$0	\$0	\$0	\$0	\$0	\$0	\$0	\$0	\$0	\$0	\$0	\$0	\$0
Ineligible	\$0	\$0	\$0	\$0	\$0	\$0	\$0	\$0	\$0	\$0	\$0	\$0	\$0	\$1	\$0	\$0	\$0	\$0	\$0	\$0	\$0	\$0	\$0
Nursing Home and Congregate Care Services																							
Graduated	\$0	\$0	\$0	\$0	\$0	\$0	\$0	\$0	\$0	\$0	\$0	\$0	\$0	\$0	\$0	\$0	\$0	\$0	\$0	\$0	\$0	\$0	\$0
DNF	\$0	\$0	\$0	\$0	\$0	\$0	\$0	\$0	\$1	\$0	\$0	\$0	\$21	\$77	\$0	\$34	\$19	\$0	\$0	\$0	\$0	\$0	\$0
Opted Out	\$0	\$0	\$0	\$0	\$0	\$0	\$0	\$0	\$0	\$0	\$48	\$113	\$4	\$0	\$0	\$0	\$0	\$0	\$0	\$0	\$0	\$0	\$0
Ineligible	\$0	\$0	\$0	\$0	\$0	\$0	\$0	\$0	\$0	\$0	\$0	\$0	\$0	\$0	\$1	\$0	\$0	\$2	\$0	\$0	\$0	\$0	\$0
Medical Outpatient Treatment																							
Graduated	\$30	\$63	\$11	\$40	\$138	\$32	\$89	\$58	\$108	\$116	\$49	\$74	\$34	\$40	\$36	\$41	\$50	\$68	\$100	\$43	\$0	\$0	
DNF	\$51	\$51	\$96	\$85	\$84	\$64	\$96	\$53	\$55	\$65	\$51	\$67	\$118	\$176	\$38	\$73	\$105	\$79	\$78	\$139	\$130	\$0	
Opted Out	\$47	\$38	\$50	\$54	\$76	\$64	\$56	\$81	\$94	\$76	\$62	\$54	\$49	\$67	\$67	\$83	\$54	\$51	\$40	\$30	\$23	\$69	
Ineligible	\$126	\$86	\$74	\$82	\$80	\$57	\$85	\$89	\$42	\$61	\$83	\$72	\$108	\$68	\$76	\$9	\$41	\$22	\$52	\$121	\$80	\$9	
Psychiatric Inpatient Treatment																							
Graduated	\$0	\$0	\$0	\$0	\$0	\$0	\$0	\$0	\$0	\$0	\$0	\$0	\$0	\$0	\$0	\$0	\$0	\$0	\$0	\$0	\$0	\$0	
DNF	\$26	\$0	\$0	\$45	\$97	\$0	\$44	\$16	\$23	\$31	\$0	\$19	\$0	\$60	\$0	\$0	\$0	\$0	\$0	\$0	\$0	\$0	
Opted Out	\$0	\$0	\$0	\$0	\$0	\$0	\$3	\$0	\$0	\$1	\$0	\$0	\$0	\$0	\$0	\$0	\$0	\$0	\$0	\$0	\$0	\$0	
Ineligible	\$0	\$0	\$0	\$0	\$112	\$0	\$0	\$0	\$0	\$26	\$0	\$0	\$0	\$0	\$0	\$0	\$6	\$0	\$0	\$0	\$0	\$0	

Skagit County
Mean Amount of Medicaid Reimbursement for Each Drug Court Group for Each Medicaid Category
For Each Quarter Pre- and Post-Drug Court Referral

Skagit County: Mean Amount of Medicaid Reimbursement Per Participant By Reimbursement Category and Participant Group																								
Quarters From Referral to Drug Court																								
	-12	-11	-10	-9	-8	-7	-6	-5	-4	-3	-2	-1	1	2	3	4	5	6	7	8	9	10	11	12
Chemical Dependency Outpatient Treatment																								
Graduated	10	18	4	4	14	11	27	21	3	3	0	27	298	261	187	216	143	61	27	0	4	0	0	0
DNF	36	36	36	35	43	39	42	43	32	22	40	65	186	255	79	22	4	36	32	0	0	0	0	0
Opted Out	0	0	0	0	0	0	0	0	0	0	0	0	0	0	0									
Detoxification																								
Graduated	\$0	\$0	\$0	\$0	\$0	\$0	\$0	\$0	\$0	\$0	\$0	\$0	\$0	\$0	\$0	\$0	\$0	\$0	\$0	\$0	\$0	\$0	\$0	\$0
DNF	\$0	\$0	\$0	\$0	\$0	\$0	\$0	\$0	\$0	\$0	\$0	\$0	\$0	\$0	\$0	\$0	\$0	\$0	\$0	\$0	\$0	\$0	\$0	\$0
Opted Out	\$0	\$0	\$0	\$0	\$0	\$0	\$0	\$0	\$0	\$0	\$0	\$0	\$0	\$0	\$0									
Emergency Room Services																								
Graduated	\$0	\$0	\$18	\$87	\$0	\$27	\$259	\$125	\$596	\$3	\$132	\$47	\$42	\$8	\$12	\$7	\$2	\$12	\$3	\$15	\$5	\$35	\$11	\$0
DNF	\$36	\$103	\$191	\$20	\$191	\$0	\$39	\$44	\$11	\$5	\$6	\$20	\$22	\$38	\$10	\$5	\$18	\$6	\$105	\$457	\$22	\$2,057	\$23	\$0
Opted Out	\$0	\$0	\$0	\$0	\$0	\$0	\$0	\$0	\$0	\$0	\$0	\$0	\$0	\$0	\$0									
Medical Inpatient Treatment																								
Graduated	\$0	\$0	\$0	\$14	\$156	\$0	\$166	\$112	\$60	\$0	\$10	\$0	\$8	\$3	\$26	\$201	\$0	\$0	\$0	\$0	\$0	\$0	\$0	\$0
DNF	\$0	\$1	\$15	\$0	\$0	\$0	\$0	\$0	\$0	\$0	\$0	\$6	\$0	\$0	\$75	\$16	\$0	\$0	\$15	\$474	\$0	\$31	\$0	\$0
Opted Out	\$0	\$0	\$0	\$0	\$0	\$0	\$0	\$0	\$0	\$0	\$0	\$0	\$0	\$0	\$0									

Skagit County (cont.)		Quarters From Referral to Drug Court																						
		-12	-11	-10	-9	-8	-7	-6	-5	-4	-3	-2	-1	1	2	3	4	5	6	7	8	9	10	11
Mental Health Outpatient Treatment																								
Graduated	\$0	\$0	\$0	\$0	\$0	\$0	\$0	\$0	\$4	\$1	\$0	\$0	\$4	\$5	\$0	\$0	\$0	\$4	\$0	\$0	\$8	\$5	\$0	\$0
DNF	\$0	\$15	\$0	\$0	\$0	\$0	\$0	\$0	\$0	\$0	\$0	\$0	\$1	\$3	\$3	\$0	\$0	\$0	\$3	\$4	\$0	\$0	\$0	\$0
Opted Out	\$0	\$0	\$0	\$0	\$0	\$0	\$0	\$0	\$0	\$0	\$0	\$0	\$0	\$0	\$0									
Nursing Home and Congregate Care Services																								
Graduated	\$0	\$0	\$0	\$0	\$0	\$0	\$0	\$0	\$0	\$0	\$0	\$0	\$0	\$0	\$0	\$0	\$0	\$0	\$0	\$0	\$0	\$0	\$0	\$0
DNF	\$4	\$0	\$0	\$0	\$0	\$0	\$0	\$0	\$0	\$0	\$0	\$0	\$0	\$0	\$0	\$0	\$0	\$0	\$0	\$0	\$0	\$0	\$0	\$0
Opted Out	\$0	\$0	\$0	\$0	\$0	\$0	\$0	\$0	\$0	\$0	\$0	\$0	\$0	\$0	\$0									
Medical Outpatient Treatment																								
Graduated	\$79	\$104	\$53	\$76	\$44	\$352	\$355	\$380	\$300	\$297	\$154	\$144	\$269	\$266	\$344	\$296	\$161	\$193	\$171	\$178	\$202	\$190	\$122	\$178
DNF	\$162	\$129	\$88	\$115	\$228	\$98	\$164	\$202	\$150	\$193	\$102	\$145	\$88	\$102	\$355	\$175	\$89	\$159	\$228	\$203	\$149	\$148	\$182	\$32
Opted Out	\$0	\$0	\$0	\$0	\$0	\$0	\$0	\$0	\$0	\$0	\$0	\$0	\$0	\$0	\$0									
Psychiatric Inpatient Treatment																								
Graduated	\$0	\$0	\$0	\$0	\$0	\$0	\$0	\$0	\$0	\$0	\$0	\$0	\$0	\$0	\$0	\$0	\$0	\$0	\$0	\$0	\$0	\$0	\$0	\$0
DNF	\$330	\$395	\$84	\$150	\$0	\$0	\$0	\$0	\$0	\$0	\$0	\$0	\$0	\$0	\$0	\$0	\$0	\$0	\$0	\$0	\$12	\$0	\$0	\$0
Opted Out	\$0	\$0	\$0	\$0	\$0	\$0	\$0	\$0	\$0	\$0	\$0	\$0	\$0	\$0	\$0									

Kitsap County
Mean Amount of Medicaid Reimbursement for Each Drug Court Group for Each Medicaid Category
For Each Quarter Pre- and Post-Drug Court Referral

Kitsap County: Mean Amount of Medicaid Reimbursement Per Participant By Reimbursement Category and Participant Group																								
Quarters From Referral to Drug Court																								
	-12	-11	-10	-9	-8	-7	-6	-5	-4	-3	-2	-1	1	2	3	4	5	6	7	8	9	10	11	12
Chemical Dependency Outpatient Treatment																								
Graduated	0	0	0	0	0	0	0	0	0	0	0	0	0	0	0	0	0	0	0	0	0	0	0	0
DNF	17	65	123	28	7	0	11	0	15	95	55	53	69	5	0	0	0	0	0	0	0	0	0	0
Opted Out	0	0	0	0	0	0	0	0	0	0	0	0	0	0	0	0	0	0	0	0	0	0	0	0
Ineligible	0	0	0	0	0	0	0	0	0	0	0	0	0	0	0	0	0	0	0	0	0	0	0	0
Detoxification																								
Graduated	\$0	\$0	\$0	\$0	\$0	\$0	\$0	\$0	\$0	\$0	\$0	\$0	\$0	\$0	\$0	\$0	\$0	\$0	\$0	\$0	\$0	\$0	\$0	\$0
DNF	\$0	\$0	\$0	\$0	\$0	\$0	\$0	\$0	\$0	\$0	\$0	\$0	\$0	\$0	\$0	\$0	\$0	\$0	\$0	\$0	\$0	\$0	\$0	\$0
Opted Out	\$0	\$0	\$0	\$0	\$0	\$0	\$0	\$0	\$0	\$0	\$0	\$0	\$0	\$0	\$0	\$0	\$0	\$0	\$0	\$0	\$0	\$0	\$0	\$0
Ineligible	\$0	\$0	\$0	\$0	\$0	\$0	\$0	\$0	\$0	\$0	\$0	\$0	\$0	\$0	\$0	\$0	\$0	\$0	\$0	\$0	\$0	\$0	\$0	\$0
Emergency Room Services																								
Graduated	\$0	\$0	\$0	\$0	\$0	\$0	\$0	\$0	\$0	\$0	\$0	\$0	\$0	\$0	\$17	\$0	\$0	\$0	\$0	\$0	\$0	\$0	\$0	\$0
DNF	\$0	\$0	\$0	\$0	\$0	\$0	\$0	\$0	\$14	\$0	\$0	\$0	\$0	\$11	\$0	\$0	\$13	\$40	\$23	\$0	\$0	\$0	\$0	\$0
Opted Out	\$0	\$0	\$0	\$0	\$0	\$0	\$0	\$0	\$0	\$0	\$0	\$0	\$0	\$0	\$0	\$0	\$0	\$0	\$0	\$0	\$0	\$0	\$0	\$0
Ineligible	\$0	\$0	\$0	\$0	\$0	\$0	\$0	\$0	\$0	\$0	\$0	\$0	\$0	\$0	\$0	\$0	\$0	\$0	\$0	\$0	\$0	\$0	\$0	\$0
Medical Inpatient Treatment																								
Graduated	\$0	\$0	\$0	\$0	\$0	\$0	\$0	\$0	\$0	\$0	\$0	\$0	\$0	\$0	\$0	\$0	\$0	\$0	\$0	\$0	\$0	\$0	\$0	\$0
DNF	\$470	\$0	\$0	\$0	\$0	\$0	\$0	\$0	\$0	\$0	\$0	\$0	\$0	\$7	\$0	\$0	\$0	\$0	\$0	\$0	\$0	\$0	\$0	\$0
Opted Out	\$0	\$0	\$0	\$0	\$0	\$0	\$0	\$0	\$0	\$0	\$0	\$0	\$0	\$0	\$0	\$0	\$0	\$0	\$0	\$0	\$0	\$0	\$0	\$0
Ineligible	\$0	\$0	\$0	\$0	\$0	\$0	\$0	\$0	\$0	\$0	\$0	\$0	\$0	\$0	\$0	\$0	\$0	\$0	\$0	\$0	\$0	\$0	\$0	\$0

Kitsap County (cont.)		Quarters From Referral to Drug Court																						
		-12	-11	-10	-9	-8	-7	-6	-5	-4	-3	-2	-1	1	2	3	4	5	6	7	8	9	10	11
Mental Health Outpatient Treatment																								
Graduated	\$0	\$0	\$0	\$0	\$0	\$0	\$0	\$0	\$0	\$0	\$0	\$0	\$0	\$0	\$0	\$0	\$0	\$0	\$0	\$0	\$0	\$0	\$0	\$0
DNF	\$0	\$0	\$0	\$0	\$0	\$0	\$0	\$0	\$0	\$0	\$0	\$0	\$0	\$0	\$0	\$0	\$0	\$12	\$21	\$0				
Opted Out	\$0	\$0	\$0	\$0	\$0	\$0	\$0	\$0	\$0	\$0	\$0	\$0	\$0	\$0	\$0	\$0	\$0	\$0	\$0	\$0				
Ineligible	\$0	\$0	\$0	\$0	\$0	\$0	\$0	\$0	\$0	\$0	\$0	\$0	\$0	\$0	\$0	\$0	\$0	\$0	\$0					
Nursing Home and Congregate Care Services																								
Graduated	\$0	\$0	\$0	\$0	\$0	\$0	\$0	\$0	\$0	\$0	\$0	\$0	\$0	\$0	\$0	\$0	\$0	\$0	\$0	\$0	\$0	\$0	\$0	\$0
DNF	\$0	\$0	\$0	\$0	\$0	\$0	\$0	\$0	\$0	\$0	\$0	\$0	\$0	\$0	\$0	\$0	\$0	\$0	\$0	\$0	\$0	\$0	\$0	\$0
Opted Out	\$0	\$0	\$0	\$0	\$0	\$0	\$0	\$0	\$0	\$0	\$0	\$0	\$0	\$0	\$0	\$0	\$0	\$0	\$0	\$0				
Ineligible	\$0	\$0	\$0	\$0	\$0	\$0	\$0	\$0	\$0	\$0	\$0	\$0	\$0	\$0	\$0	\$0	\$0	\$0	\$0					
Medical Outpatient Treatment																								
Graduated	\$0	\$0	\$0	\$0	\$0	\$0	\$0	\$0	\$0	\$0	\$0	\$0	\$0	\$402	\$8	\$0	\$0	\$0	\$0					
DNF	\$126	\$96	\$118	\$108	\$414	\$137	\$155	\$107	\$276	\$172	\$166	\$151	\$153	\$177	\$51	\$17	\$55	\$59	\$181					
Opted Out	\$0	\$0	\$0	\$0	\$0	\$0	\$0	\$0	\$0	\$0	\$0	\$0	\$0	\$0	\$0	\$0	\$0	\$0						
Ineligible	\$0	\$0	\$0	\$0	\$0	\$0	\$0	\$0	\$0	\$148	\$186	\$198	\$162	\$146	\$0	\$0	\$0	\$0						
Psychiatric Inpatient Treatment																								
Graduated	\$0	\$0	\$0	\$0	\$0	\$0	\$0	\$0	\$0	\$0	\$0	\$0	\$0	\$0	\$0	\$0	\$0	\$0	\$0	\$0	\$0	\$0	\$0	\$0
DNF	\$0	\$0	\$0	\$0	\$0	\$0	\$0	\$0	\$0	\$0	\$0	\$0	\$0	\$0	\$0	\$0	\$23	\$0	\$0	\$0				
Opted Out	\$0	\$0	\$0	\$0	\$0	\$0	\$0	\$0	\$0	\$0	\$0	\$0	\$0	\$0	\$0	\$0	\$0	\$0	\$0					
Ineligible	\$0	\$0	\$0	\$0	\$0	\$0	\$0	\$0	\$0	\$0	\$0	\$0	\$0	\$0	\$0	\$0	\$0	\$0						

King County
 Total Amount of Medicaid Reimbursement for Each Drug Court Group for Each Medicaid Category
 For Each Quarter Pre- and Post-Drug Court Referral

King County: Total Medicaid Reimbursements By Reimbursement Category and Outcome Group																								
Quarters From Referral to Drug Court																								
	-12	-11	-10	-9	-8	-7	-6	-5	-4	-3	-2	-1	1	2	3	4	5	6	7	8	9	10	11	12
Chemical Dependency Outpatient Treatment																								
Graduated	1,445	3,732	3,051	4,440	4,852	3,146	2,900	2,397	2,132	3,164	3,157	2,589	6,492	9,642	8,073	10,137	7,725	8,111	9,649	4,617	4,207	5,612	5,312	5,343
DNF	8,882	8,572	10,114	12,130	13,268	13,679	13,438	12,164	12,663	10,902	9,709	9,863	16,730	18,679	13,813	11,242	11,544	11,605	13,362	15,980	15,557	11,183	11,706	9,841
Opted Out	6,779	10,102	12,662	7,700	13,854	12,394	14,644	15,353	11,677	13,498	14,301	12,734	18,209	13,256	11,380	12,069	12,038	11,360	15,132	13,408	14,267	18,051	18,710	15,152
Ineligible	4,184	5,499	1,609	722	2,151	2,310	2,822	2,893	2,408	2,662	2,277	1,906	2,163	2,436	721	1,799	2,343	7,833	12,286	7,508	1,157	1,476	2,072	2,510
Detoxification																								
Graduated	0	0	0	0	0	0	0	3,253	0	0	0	0	0	0	0	0	0	0	0	0	0	0	0	0
DNF	0	0	0	0	0	0	0	0	0	0	1,279	0	0	0	0	0	0	0	0	0	0	0	0	0
Opted Out	0	0	0	0	2,864	0	0	0	0	0	1,526	0	0	0	0	7,411	3,105	3,763	768	0	0	0	0	0
Ineligible	0	0	0	0	0	0	0	0	0	0	0	0	1,622	0	0	0	0	0	0	0	0	0	0	0
Emergency Room Services																								
Graduated	7,519	7,951	1,701	6,289	3,555	15,185	88,274	14,181	14,079	12,004	15,164	22,946	7,347	5,068	8,439	1,526	17,109	19,737	10,939	28,280	84,683	22,602	10,456	2,782
DNF	25,474	36,185	44,496	47,214	34,695	21,336	48,343	68,010	62,213	100,729	92,925	89,396	91,143	64,803	71,105	48,905	100,106	43,128	46,866	41,163	31,779	42,279	37,654	34,827
Opted Out	44,591	102,898	112,977	70,086	47,732	128,392	78,817	87,123	125,586	135,062	108,661	112,639	173,929	155,080	189,103	113,551	117,622	92,497	64,060	92,756	102,086	81,297	50,568	70,590
Ineligible	34,967	72,508	30,774	20,496	56,414	30,654	23,224	15,387	26,526	55,485	35,901	40,678	34,356	25,912	21,602	27,887	52,434	5,683	12,406	10,689	17,831	2,845	21,779	654
Medical Inpatient Treatment																								
Graduated	1,021	2,450	10,733	1,887	5,912	22,510	28,177	6,265	9,567	2,488	9,157	3,755	6,177	1,175	57	2,034	14,275	5,290	5,043	1,373	10,364	16,909	335	5,994
DNF	18,707	19,549	24,316	19,680	16,980	1,284	36,576	4,688	41,436	30,280	26,237	16,884	44,467	38,873	69,772	35,597	103,093	48,504	30,562	130,118	16,693	26,096	32,235	26,906
Opted Out	25,447	102,813	38,915	124,028	34,972	63,941	73,194	88,316	63,750	30,081	66,724	75,422	103,645	133,081	57,087	53,761	90,738	62,865	40,295	49,768	40,726	27,044	39,304	73,711
Ineligible	1,269	16,036	25,934	5,378	16,193	55,619	3,220	6,717	46,637	6,731	6,399	14,423	4,386	30,252	51,596	8,630	46,550	7,683	7,702	6,200	1,815	3,640	516	100

King County (cont.)

Quarters From Referral to Drug Court

	-12	-11	-10	-9	-8	-7	-6	-5	-4	-3	-2	-1	1	2	3	4	5	6	7	8	9	10	11	12
Mental Health Outpatient Treatment																								
Graduated	1,938	3,289	2,125	8,480	2,752	3,163	667	1,336	532	526	333	78	608	67	552	666	518	574	438	322	346	210	53	122
DNF	3,206	4,411	3,616	2,608	6,141	8,409	6,122	4,953	4,349	4,485	5,834	3,276	2,259	1,155	1,981	946	774	479	691	755	759	1,083	899	1,130
Opted Out	17,143	19,679	16,634	7,217	14,795	16,628	26,846	13,558	9,571	10,014	8,528	13,916	5,679	5,416	4,754	1,693	2,476	1,433	1,322	1,232	2,540	967	28,715	1,133
Ineligible	1,274	940	656	1,888	1,597	1,134	3,151	1,423	3,017	2,872	1,734	1,771	1,852	897	735	57	177	0	150	121	29	0	120	0
Nursing Home and Congregate Care Services																								
Graduated	0	0	0	0	0	0	4,867	5,564	0	0	0	8,629	1,018	0	0	0	0	0	0	5,889	0	12,120	4,535	0
DNF	0	804	0	0	0	0	884	13,276	0	0	0	0	0	46	0	2,569	35	3,354	5,736	2,245	10,391	19,180	14,042	24,036
Opted Out	0	0	0	704	0	12,924	19,751	19,502	27,927	21,068	24,496	10,786	4,088	34,428	55,625	36,826	42,905	64,246	108,354	64,529	44,218	31,097	15,486	9,867
Ineligible	0	123	130	0	9,952	11,558	11	0	4,233	796	0	183	0	0	0	4,480	4,023	12,770	0	3,993	1,318	0	0	0
Medical Outpatient Treatment																								
Graduated	10,499	22,522	11,061	12,498	15,185	14,693	19,892	16,835	17,874	15,499	13,261	20,665	22,094	40,710	25,354	25,729	40,559	34,919	27,425	29,110	23,134	30,189	25,791	27,716
DNF	39,279	50,944	50,358	48,537	54,845	48,635	56,710	60,847	55,814	62,447	73,493	74,599	72,190	84,991	83,161	80,172	78,562	78,628	113,549	80,624	82,965	70,495	62,061	65,118
Opted Out	85,113	105,437	99,802	126,342	118,988	112,870	140,485	159,563	169,176	178,857	186,618	209,846	201,851	222,607	199,027	184,085	167,460	174,420	191,620	184,912	177,888	150,579	159,270	150,844
Ineligible	25,405	24,653	32,462	23,966	33,150	33,652	28,983	24,023	28,045	48,448	30,172	33,288	27,370	30,909	30,759	31,578	21,691	25,576	29,249	22,183	12,671	11,817	12,669	8,591
Psychiatric Inpatient Treatment																								
Graduated	6,476	0	0	0	0	126	3,101	754	176	5,941	0	9,006	0	0	486	0	6,137	77	0	4,823	0	0	0	168
DNF	10,135	265	281	7,722	14,217	15,872	20,838	42,681	24,437	11,831	26,637	7,474	27,331	33,595	20,711	800	7,123	16,445	12,135	9,872	2,900	511	606	9,341
Opted Out	922	2,285	9,548	16,630	7,638	8,538	33,590	6,819	16,170	23,422	29,697	28,068	105,194	17,377	37,711	29,667	41,259	15,056	13,767	3,017	15,988	1,918	19,830	22,133
Ineligible	5,063	13,555	4,165	0	16,990	6,428	1,523	14,034	23,256	4,641	1,544	6,776	5,779	17,801	22,417	6,582	7,921	0	795	200	1,857	30	156	82

Pierce County
 Total Amount of Medicaid Reimbursement for Each Drug Court Group for Each Medicaid Category
 For Each Quarter Pre- and Post-Drug Court Referral

Pierce County: Total Medicaid Reimbursements By Reimbursement Category and Outcome Group																								
Quarters From Referral to Drug Court																								
	-12	-11	-10	-9	-8	-7	-6	-5	-4	-3	-2	-1	1	2	3	4	5	6	7	8	9	10	11	12
Chemical Dependency Outpatient Treatment																								
Graduated	1,411	454	649	10,535	996	580	756	1,003	1,222	1,075	541	401	2,231	6,557	8,480	5,116	5,307	3,138	3,299	1,445	1,825	1,278	182	857
DNF	3,433	4,164	3,995	4,744	4,661	4,747	5,636	4,895	2,820	2,152	1,855	1,585	3,632	1,234	2,835	3,015	2,724	8,592	2,989	2,512	2,867	1,246	1,980	1,282
Opted Out	347	474	558	2,206	3,545	6,953	3,563	2,528	1,598	1,067	0	1,339	1,748	1,770	2,458	4,686	5,495	2,527	6,132	6,132	3,476	3,849	3,200	4,220
Ineligible	1,094	975	1,093	3,786	3,337	8,314	6,006	5,449	3,908	2,856	1,712	2,258	2,245	3,268	5,977	6,700	9,475	9,300	10,023	10,663	8,715	7,450	8,186	7,383
Detoxification																								
Graduated	0	0	0	0	0	0	0	0	0	0	0	0	0	0	0	0	0	0	0	0	0	0	0	0
DNF	0	0	0	0	0	0	0	0	0	0	0	1,470	0	0	0	0	0	0	0	0	0	0	0	0
Opted Out	0	0	0	0	0	0	0	0	0	0	0	0	0	0	0	0	0	0	0	0	0	0	0	0
Ineligible	0	0	0	0	0	0	0	0	0	0	0	0	0	0	0	0	0	0	0	0	4,132	0	0	0
Emergency Room Services																								
Graduated	7,703	11,542	245	2,524	14,185	1,259	2,400	3,932	493	6,193	3,738	11,746	2,069	3,057	4,884	2,493	6,922	9,050	7,702	468	996	4,754	7,183	5,955
DNF	45,689	5,011	4,195	7,028	9,318	8,602	1,519	20,059	10,584	3,260	20,582	23,240	20,970	58,603	106,777	27,290	25,356	5,895	14,847	1,254	17,466	2,860	4,768	2,553
Opted Out	0	7,656	761	3,976	11,109	11,966	13,046	14,719	4,245	42,766	14,681	2,468	23,236	23,280	7,400	21,284	4,412	17,102	26,910	12,870	6,489	15,959	9,822	38,798
Ineligible	13,825	12,489	7,258	19,744	34,280	29,775	33,573	51,929	28,438	49,869	30,031	55,427	31,777	48,898	71,249	74,112	49,030	39,298	18,427	28,697	31,963	29,118	17,161	64,517
Medical Inpatient Treatment																								
Graduated	11,020	717	0	0	372	8,579	9,747	2,257	0	925	6,370	7,027	28	9,513	3,220	3,824	30	1,203	203	0	0	0	178	247
DNF	17,046	698	0	2,092	4,339	265	2,182	16,808	6,517	5,322	4,582	860	29,339	5,949	2,972	43,728	3,750	122	179	250	9,832	5,714	40	7
Opted Out	0	1,058	4,072	3,795	4,479	6,977	370	1,021	5,324	13	18,852	16,081	16,614	13,676	2,442	1,754	10,632	6,501	9,139	7,109	228	6,070	2,222	4,006
Ineligible	18,258	5,952	20,632	2,244	10,792	17,602	24,691	21,785	26,207	26,494	13,811	1,253	27,785	75,306	43,731	52,867	9,640	15,528	93,368	3,006	3,253	1,610	19,288	88,624

Pierce County (cont.)

Quarters From Referral to Drug Court

	-12	-11	-10	-9	-8	-7	-6	-5	-4	-3	-2	-1	1	2	3	4	5	6	7	8	9	10	11	12
Mental Health Outpatient Treatment																								
Graduated	0	0	0	0	0	0	0	364	0	56	0	42	0	0	0	0	0	0	0	79	0	25	0	67
DNF	167	84	0	5,825	0	0	0	0	0	51	72	62	59	201	63	30	30	30	2,243	30	144	96	0	30
Opted Out	154	153	4,681	1,281	958	134	140	99	37	136	139	136	66	2,841	0	30	4,421	3,375	3,248	38	67	78	0	136
Ineligible	1,950	2,629	12,750	16,982	7,106	8,529	11,458	20,732	29,804	7,431	5,783	2,742	9,565	8,977	21,275	23,378	6,940	293	757	156	130	64	303	267
Nursing Home and Congregate Care Services																								
Graduated	0	0	0	0	0	0	0	0	0	0	5,581	477	0	114	34	20	0	0	0	0	0	35	0	0
DNF	0	0	0	0	0	0	1,718	2,345	457	0	0	0	0	13,717	13,982	27,195	23,244	0	46	43	1,684	9,521	0	0
Opted Out	0	0	45	0	0	1,675	1,654	0	0	0	0	0	54	40	74	62	49	4,355	0	0	0	0	0	0
Ineligible	0	0	0	0	0	0	0	0	0	8,964	5,204	0	0	0	10,780	6,253	5,568	0	63	0	1,065	2,905	376	3,418
Medical Outpatient Treatment																								
Graduated	13,289	11,988	10,026	12,242	18,681	17,526	21,104	15,139	15,231	21,847	17,334	26,784	22,191	37,121	45,541	44,619	42,036	43,694	37,611	31,870	31,332	25,742	23,306	16,462
DNF	26,789	19,009	18,914	19,902	22,976	22,384	18,533	21,938	36,274	18,062	21,007	21,814	21,495	46,431	35,073	37,912	26,790	18,431	24,092	19,915	31,608	21,504	26,581	17,408
Opted Out	8,172	10,854	16,765	16,664	22,013	27,358	29,384	24,528	20,143	25,555	25,120	24,177	21,198	22,650	29,524	29,253	30,774	20,977	31,816	27,051	21,746	19,857	19,777	21,140
Ineligible	19,333	23,128	17,916	24,235	26,836	30,646	38,716	36,162	64,472	50,608	86,502	58,881	52,613	75,034	67,472	66,238	60,183	64,863	58,775	68,357	54,342	52,580	58,929	61,851
Psychiatric Inpatient Treatment																								
Graduated	0	0	0	0	0	0	3,661	0	0	393	7,143	362	0	0	642	0	134	0	0	0	0	269	2,285	0
DNF	269	0	0	3,880	0	2,675	0	3,920	364	2,361	0	0	403	5,057	260	3,193	0	3,873	1,499	2,200	0	0	0	5,221
Opted Out	0	0	0	3,937	493	2,144	4,816	4,912	1,606	517	0	0	1,334	122	4,432	0	0	1,894	8,146	824	275	4,601	2,778	1,296
Ineligible	8,862	758	3,727	1,192	13,242	11,629	59	7,426	15,491	10,963	12,423	17,204	8,608	14,206	17,958	16,575	8,740	7,312	5,245	732	5,257	0	38,861	5,808

Spokane County
 Total Amount of Medicaid Reimbursement for Each Drug Court Group for Each Medicaid Category
 For Each Quarter Pre- and Post-Drug Court Referral

Spokane County: Total Medicaid Reimbursements By Reimbursement Category and Outcome Group																								
Quarters From Referral to Drug Court																								
	-12	-11	-10	-9	-8	-7	-6	-5	-4	-3	-2	-1	1	2	3	4	5	6	7	8	9	10	11	12
Chemical Dependency Outpatient Treatment																								
Graduated	335	0	268	188	191	352	1,138	1,459	1,007	1,338	1,350	139	4,087	8,027	7,457	4,780	3,191	3,031	788	1,318	507	0	400	589
DNF	379	545	209	457	23	0	159	198	1,063	590	980	1,220	9,065	7,417	5,885	3,786	4,381	2,941	2,571	2,136	1,406	969	816	875
Opted Out	2,421	3,316	3,594	7,241	4,371	3,276	2,625	2,277	2,092	4,082	3,251	2,651	1,583	1,632	1,898	2,415	2,881	3,593	1,426	1,783	3,415	1,368	1,030	501
Ineligible	7,381	8,591	18,335	8,454	4,837	3,328	7,342	4,002	3,539	4,086	4,852	3,595	2,309	11,741	11,512	2,042	2,726	4,353	3,167	3,002	10,467	5,859	3,199	1,259
Detoxification																								
Graduated	0	0	0	0	0	0	0	0	0	0	0	0	0	0	0	0	0	0	0	0	0	0	0	0
DNF	0	0	0	0	0	0	0	0	0	0	0	0	0	0	0	0	0	0	0	0	0	0	0	0
Opted Out	0	0	0	0	0	0	0	0	0	0	0	0	0	0	0	0	0	0	0	0	0	0	0	0
Ineligible	0	0	0	0	0	0	0	0	0	0	0	0	0	0	0	0	0	0	0	0	0	0	0	0
Emergency Room Services																								
Graduated	657	1,326	0	11,793	2,516	5,933	3,048	8,466	6,265	2,484	1,259	120	8,498	395	314	63	0	0	0	950	0	381	46	0
DNF	35	4,250	3,956	0	9,972	430	1,283	593	5,218	699	433	614	4,881	409	375	185	4,080	3,967	912	6,325	485	0	0	2,745
Opted Out	11,706	6,047	5,666	10,756	3,808	16,641	21,446	11,220	3,514	11,428	14,100	7,814	114,930	23,358	9,065	16,157	9,852	5,603	24,041	8,863	7,035	7,611	13,475	2,095
Ineligible	16,077	18,220	53,668	24,673	10,718	39,525	24,577	12,040	61,107	24,676	134,099	72,078	327,120	19,117	62,322	174,416	35,694	30,827	15,351	14,445	31,443	100,453	10,711	89,875
Medical Inpatient Treatment																								
Graduated	0	0	0	6,912	57	612	0	1,470	12,032	4,557	3,715	0	559	0	0	0	0	0	3,586	0	0	0	0	0
DNF	3,491	0	780	0	448	716	2,365	11,475	185	0	0	0	3,937	4,001	16,724	4,747	102	1,796	1,109	125	0	2,576	5,922	64
Opted Out	4,719	25,188	11,392	3,962	36,426	11,473	2,286	14,785	27,762	6,106	9,884	8,825	4,281	46,437	1,232	15,643	32,014	36,054	7,969	6,337	1,579	2,959	8,195	5,544
Ineligible	691	35,311	63,189	963	21,472	6,879	16,252	7,384	20,738	17,262	11,891	10,649	65,280	4,120	32,958	15,945	6,531	58,144	18,795	3,492	58,252	550	1,862	6,167

Spokane County (cont.)

Quarters From Referral to Drug Court

	-12	-11	-10	-9	-8	-7	-6	-5	-4	-3	-2	-1	1	2	3	4	5	6	7	8	9	10	11	12
Mental Health Outpatient Treatment																								
Graduated	428	547	192	0	0	0	57	1,208	893	45	0	0	125	170	16	0	0	0	30	0	54	59	0	0
DNF	625	353	1,003	0	0	0	0	59	142	125	74	87	14	0	0	0	0	0	0	0	0	0	0	0
Opted Out	2,204	1,168	1,752	1,090	1,402	155	599	485	565	61	147	60	0	0	45	78	120	213	161	0	87	120	27	0
Ineligible	420	1,231	168	154	579	1,483	3,197	2,983	438	580	573	434	150	25,445	432	236	408	418	20,595	60	406	30	0	0
Nursing Home and Congregate Care Services																								
Graduated	0	0	0	0	0	0	0	0	0	0	0	0	0	0	0	0	0	0	0	0	0	0	0	0
DNF	0	0	0	0	1,990	3,686	0	5,180	1,049	0	0	0	0	0	0	0	0	0	0	0	0	0	0	0
Opted Out	0	0	0	0	0	0	0	0	0	0	0	0	0	67	0	323	0	0	0	192	67	0	0	0
Ineligible	0	0	0	0	5	0	0	0	2,671	20	0	0	35	5,159	8,777	8,547	0	1,841	8,348	0	32	0	0	0
Medical Outpatient Treatment																								
Graduated	5,368	3,585	2,846	3,125	3,113	4,423	4,736	8,007	6,209	7,056	4,922	6,267	4,115	7,230	15,361	8,818	10,048	11,470	8,490	6,954	12,923	8,342	7,751	6,072
DNF	5,865	3,563	9,830	5,058	9,923	7,171	6,740	9,459	6,709	8,899	7,304	9,065	16,285	8,881	15,189	13,513	8,897	8,024	11,093	9,172	6,451	6,183	7,871	6,296
Opted Out	40,211	37,884	37,119	45,362	49,144	47,005	48,022	63,529	48,472	58,235	43,973	40,761	39,691	44,882	58,773	37,814	42,779	34,140	38,476	35,129	46,325	36,419	38,090	33,162
Ineligible	89,544	108,29	98,298	95,484	107,34	99,486	119,38	120,78	122,29	119,99	128,38	122,12	107,57	95,168	107,83	85,432	93,051	77,960	79,140	51,906	37,922	47,096	34,681	31,570
		0			2		7	5	3	4	1	9	5		4									
Psychiatric Inpatient Treatment																								
Graduated	0	0	0	0	4,605	0	7,999	9,132	18,986	1,091	0	0	0	0	0	0	0	0	0	0	0	0	0	0
DNF	0	342	0	0	0	0	11,707	0	0	0	0	3,108	3,391	0	0	0	0	0	0	0	0	0	0	0
Opted Out	1,701	1,281	0	0	3,226	192	0	0	0	0	2,878	0	0	971	1,877	0	0	0	0	0	0	0	0	0
Ineligible	4,208	2,431	10,471	4,338	0	34,287	1,581	13,105	10,051	15,812	23,478	5,682	9,813	11,952	9,761	18,448	5,268	0	0	4,856	23,391	341	0	0

Thurston County
 Total Amount of Medicaid Reimbursement for Each Drug Court Group for Each Medicaid Category
 For Each Quarter Pre- and Post-Drug Court Referral

Thurston County: Total Medicaid Reimbursements By Reimbursement Category and Outcome Group																								
Quarters From Referral to Drug Court																								
	-12	-11	-10	-9	-8	-7	-6	-5	-4	-3	-2	-1	1	2	3	4	5	6	7	8	9	10	11	12
Chemical Dependency Outpatient Treatment																								
Graduated	0	0	0	82	0	0	0	0	0	0	0	151	0	0	0	0	0	0	0	0	0	0	0	0
DNF	769	101	94	1,210	920	212	216	195	194	0	136	1,191	197	199	0	1,027	86	42	0	1,063	391	0		
Opted Out	906	696	903	2,067	3,627	1,718	1,914	2,043	2,758	4,600	607	174	1,795	3,149	929	1,258	625	60	208	405	0	0		
Ineligible	0	0	331	168	85	0	0	0	0	0	0	0	0	86	0	329	0	0	0	0	0	0	0	0
Detoxification																								
Graduated	0	0	0	0	0	0	0	0	0	0	0	0	0	0	0	0	0	0	0	0	0	0	0	0
DNF	0	0	0	0	0	0	0	0	0	0	0	0	0	0	0	1,785	0	0	0	0	0	0	0	0
Opted Out	0	0	0	0	0	0	0	0	0	0	0	0	0	0	0	0	0	0	0	0	0	0	0	0
Ineligible	0	0	0	0	0	0	0	0	0	0	0	0	0	0	0	0	0	0	0	0	0	0	0	0
Emergency Room Services																								
Graduated	0	0	0	304	0	0	0	280	774	0	73	0	0	0	0	0	0	0	0	0	0	0	0	0
DNF	1,581	374	1,160	1,053	1,060	142	172	686	1,423	2,605	370	5,609	1,828	2,844	262	1,786	17,931	527	280	1,238	264	0		
Opted Out	32	2,954	205	373	2,462	2,425	908	6,356	1,099	3,603	3,235	6,559	29,857	5,277	7,944	1,213	50	1,389	1,100	82	0	0		
Ineligible	774	621	670	59	1,552	559	1,094	810	3,372	2,784	154	363	0	0	262	212	0	73	0	0	0	0	157	
Medical Inpatient Treatment																								
Graduated	0	0	0	0	0	0	0	0	0	0	0	0	0	0	0	0	0	0	0	2,900	0	0		
DNF	0	0	0	0	5,099	0	0	0	0	98	0	1,598	6,629	3,647	0	9,441	1,801	0	3,713	5,972	0	0		
Opted Out	0	0	760	0	0	3,906	0	1,382	313	8	120,361	3,100	3,642	606	747	9,883	0	0	0	0	0	0		
Ineligible	772	0	0	775	0	23	760	0	172	310	0	0	768	0	0	0	0	0	0	0	0	0	0	0

Thurston County (cont.)		Quarters From Referral to Drug Court																					
		-12	-11	-10	-9	-8	-7	-6	-5	-4	-3	-2	-1	1	2	3	4	5	6	7	8	9	10
Mental Health Outpatient Treatment																							
Graduated	0	0	0	0	0	0	0	0	0	0	0	0	0	0	0	0	0	0	0	76	0	0	0
DNF	551	0	0	0	0	0	0	0	0	78	41	108	41	0	0	0	0	0	0	0	0	0	0
Opted Out	0	30	82	30	31	31	200	74	63	30	0	30	60	0	0	0	0	0	0	0	0	0	0
Ineligible	0	0	0	0	0	0	0	0	0	0	0	0	0	47	6	0	0	0	0	0	0	0	0
Nursing Home and Congregate Care Services																							
Graduated	0	0	0	0	0	0	0	0	0	0	0	0	0	0	0	0	0	0	0	0	0	0	0
DNF	0	0	0	0	0	0	0	0	73	0	45	0	1,969	7,377	0	3,169	1,650	37	0	0	0	0	0
Opted Out	0	0	0	0	0	0	0	0	26	0	13,231	30,926	1,122	35	29	37	0	0	0	0	0	0	0
Ineligible	0	0	0	0	0	0	0	0	0	0	0	0	0	0	37	0	0	61	0	0	0	0	0
Medical Outpatient Treatment																							
Graduated	1,000	2,066	366	1,315	4,566	1,044	2,926	1,898	3,561	3,824	1,622	2,441	1,116	1,331	1,192	1,347	1,642	2,173	2,700	808	0	0	0
DNF	4,899	4,932	9,220	8,153	8,100	6,144	9,218	5,133	5,303	6,270	4,938	6,401	11,308	16,863	3,613	6,687	8,988	5,904	4,661	6,264	3,129	0	0
Opted Out	12,753	10,439	13,771	14,686	20,631	17,377	15,404	22,011	25,571	20,818	17,001	14,873	13,270	18,349	16,635	18,307	9,908	7,681	3,836	1,840	700	757	0
Ineligible	4,660	3,174	2,739	3,025	2,947	2,108	3,135	3,282	1,565	2,270	3,076	2,654	3,999	2,504	2,519	292	1,184	598	1,153	1,697	881	65	0
Psychiatric Inpatient Treatment																							
Graduated	0	0	0	0	0	0	0	0	0	0	0	0	0	0	0	0	0	0	0	0	0	0	0
DNF	2,485	0	0	4,297	9,307	0	4,194	1,556	2,172	3,006	0	1,796	0	5,732	0	0	0	0	0	0	0	0	0
Opted Out	0	0	0	0	0	0	764	0	0	379	0	0	0	0	0	0	0	0	0	0	0	0	0
Ineligible	0	0	0	0	4,130	0	0	0	0	973	0	0	0	0	0	0	174	0	0	0	0	0	0

Skagit County
 Total Amount of Medicaid Reimbursement for Each Drug Court Group for Each Medicaid Category
 For Each Quarter Pre- and Post-Drug Court Referral

Skagit County: Total Medicaid Reimbursements By Reimbursement Category and Outcome Group																								
Quarters From Referral to Drug Court																								
	-12	-11	-10	-9	-8	-7	-6	-5	-4	-3	-2	-1	1	2	3	4	5	6	7	8	9	10	11	12
Chemical Dependency Outpatient Treatment																								
Graduated	290	553	127	133	425	328	814	623	102	97	0	820	8,943	7,842	5,614	6,477	4,295	1,816	715	0	54	0	0	0
DNF	872	874	858	840	1,027	926	1,005	1,034	763	540	953	1,567	4,467	6,130	1,904	520	97	714	573	0	0	0	0	0
Opted Out	0	0	0	0	0	0	0	0	0	0	0	0	0	0	0	0	0	0	0	0	0	0	0	0
Detoxification																								
Graduated	0	0	0	0	0	0	0	0	0	0	0	0	0	0	0	0	0	0	0	0	0	0	0	0
DNF	0	0	0	0	0	0	0	0	0	0	0	0	0	0	0	0	0	0	0	0	0	0	0	0
Opted Out	0	0	0	0	0	0	0	0	0	0	0	0	0	0	0	0	0	0	0	0	0	0	0	0
Emergency Room Services																								
Graduated	0	0	536	2,621	0	816	7,767	3,753	17,867	89	3,957	1,419	1,269	238	358	218	50	347	67	265	71	382	84	0
DNF	872	2,468	4,591	474	4,594	0	945	1,050	268	116	148	487	522	916	242	130	389	121	1,885	6,859	218	18,513	139	0
Opted Out	0	0	0	0	0	0	0	0	0	0	0	0	0	0	0	0	0	0	0	0	0	0	0	0
Medical Inpatient Treatment																								
Graduated	0	0	0	406	4,691	8	4,970	3,365	1,790	0	309	11	254	88	789	6,019	0	0	0	0	0	0	0	0
DNF	0	34	366	0	0	0	0	0	0	0	0	136	0	0	1,794	391	0	0	263	7,107	0	281	0	0
Opted Out	0	0	0	0	0	0	0	0	0	0	0	0	0	0	0	0	0	0	0	0	0	0	0	0

Skagit County (cont.)		Quarters From Referral to Drug Court																							
		-12	-11	-10	-9	-8	-7	-6	-5	-4	-3	-2	-1	1	2	3	4	5	6	7	8	9	10	11	12
Mental Health Outpatient Treatment																									
Graduated	0	0	0	0	0	0	0	0	107	31	0	0	108	150	0	0	0	118	0	0	119	60	0	0	
DNF	0	371	0	0	0	0	0	0	0	0	0	0	30	60	60	0	0	0	60	60	0	0	0	0	
Opted Out	0	0	0	0	0	0	0	0	0	0	0	0	0	0	0										
Nursing Home and Congregate Care Services																									
Graduated	0	0	0	0	0	0	5	0	0	0	0	0	0	0	0	0	0	0	0	0	0	0	0	0	
DNF	93	0	0	0	0	0	0	0	0	0	0	0	0	0	0	0	0	0	0	0	0	0	0	0	
Opted Out	0	0	0	0	0	0	0	0	0	0	0	0	0	0	0										
Medical Outpatient Treatment																									
Graduated	2,361	3,119	1,599	2,278	1,315	10,549	10,641	11,408	8,985	8,908	4,632	4,305	8,074	7,967	10,328	8,891	4,817	5,790	4,438	3,202	3,028	2,085	975	710	
DNF	3,878	3,093	2,112	2,751	5,468	2,360	3,932	4,859	3,594	4,627	2,445	3,470	2,122	2,451	8,528	4,198	1,968	3,183	4,106	3,044	1,488	1,330	1,090	129	
Opted Out	0	0	0	0	0	0	0	0	0	0	0	0	0	0	0										
Psychiatric Inpatient Treatment																									
Graduated	0	0	0	0	0	0	0	0	0	0	0	0	0	0	0	0	0	0	0	0	0	0	0	0	
DNF	7,926	9,471	2,005	3,593	0	0	0	0	0	0	0	0	0	0	0	0	0	0	0	0	179	0	0	0	
Opted Out	0	0	0	0	0	0	0	0	0	0	0	0	0	0	0										

Kitsap County
 Total Amount of Medicaid Reimbursement for Each Drug Court Group for Each Medicaid Category
 For Each Quarter Pre- and Post-Drug Court Referral

Kitsap County: Total Medicaid Reimbursements By Reimbursement Category and Outcome Group																								
Quarters From Referral to Drug Court																								
	-12	-11	-10	-9	-8	-7	-6	-5	-4	-3	-2	-1	1	2	3	4	5	6	7	8	9	10	11	12
Chemical Dependency Outpatient Treatment																								
Graduated	0	0	0	0	0	0	0	0	0	0	0	0	0	0	0	0	0	0	0	0	0	0	0	0
DNF	279	1,044	1,962	451	119	0	177	0	240	1,518	885	851	1,103	78	0	0	0	0	0	0	0	0	0	0
Opted Out	0	0	0	0	0	0	0	0	0	0	0	0	0	0	0	0	0	0	0	0	0	0	0	0
Ineligible	0	0	0	0	0	0	0	0	0	0	0	0	0	0	0	0	0	0	0	0	0	0	0	0
Detoxification																								
Graduated	0	0	0	0	0	0	0	0	0	0	0	0	0	0	0	0	0	0	0	0	0	0	0	0
DNF	0	0	0	0	0	0	0	0	0	0	0	0	0	0	0	0	0	0	0	0	0	0	0	0
Opted Out	0	0	0	0	0	0	0	0	0	0	0	0	0	0	0	0	0	0	0	0	0	0	0	0
Ineligible	0	0	0	0	0	0	0	0	0	0	0	0	0	0	0	0	0	0	0	0	0	0	0	0
Emergency Room Services																								
Graduated	0	0	0	0	0	0	0	0	0	0	0	0	0	0	104	0	0	0	0	0	0	0	0	0
DNF	0	0	0	0	0	0	0	0	227	0	0	0	0	169	0	0	113	277	114	0	0	0	0	0
Opted Out	0	0	0	0	0	0	0	0	0	0	0	0	0	0	0	0	0	0	0	0	0	0	0	0
Ineligible	0	0	0	0	0	0	0	0	0	0	0	0	0	0	0	0	0	0	0	0	0	0	0	0
Medical Inpatient Treatment																								
Graduated	0	0	0	0	0	0	0	0	0	0	0	0	0	0	0	0	0	0	0	0	0	0	0	0
DNF	7,517	0	0	0	0	0	0	0	0	0	0	0	0	110	0	0	0	0	0	0	0	0	0	0
Opted Out	0	0	0	0	0	0	0	0	0	0	0	0	0	0	0	0	0	0	0	0	0	0	0	0
Ineligible	0	0	0	0	0	0	0	0	0	0	0	0	0	0	0	0	0	0	0	0	0	0	0	0

Kitsap County (cont.)

Quarters From Referral to Drug Court

	-12	-11	-10	-9	-8	-7	-6	-5	-4	-3	-2	-1	1	2	3	4	5	6	7	8	9	10	11	12
Mental Health Outpatient Treatment																								
Graduated	0	0	0	0	0	0	0	0	0	0	0	0	0	0	0	0	0	0	0	0	0	0	0	0
DNF	0	0	0	0	0	0	0	0	0	0	0	0	0	0	0	0	0	104	145	0				
Opted Out	0	0	0	0	0	0	0	0	0	0	0	0	0	0	0	0	0	0	0					
Ineligible	0	0	0	0	0	0	0	0	0	0	0	0	0	0	0	0	0	0	0					
Nursing Home and Congregate Care Services																								
Graduated	0	0	0	0	0	0	0	0	0	0	0	0	0	0	0	0	0	0	0	0	0	0	0	0
DNF	0	0	0	0	0	0	0	0	0	0	0	0	0	0	0	0	0	0	0	0	0	0	0	0
Opted Out	0	0	0	0	0	0	0	0	0	0	0	0	0	0	0	0	0	0	0					
Ineligible	0	0	0	0	0	0	0	0	0	0	0	0	0	0	0	0	0	0	0					
Medical Outpatient Treatment																								
Graduated	0	0	0	0	0	0	0	0	0	0	0	0	0	2,411	46	0	0	0	0					
DNF	2,013	1,535	1,884	1,729	6,617	2,191	2,479	1,716	4,414	2,747	2,656	2,423	2,454	2,831	767	192	497	410	904					
Opted Out	0	0	0	0	0	0	0	0	0	0	0	0	0	0	0	0	0	0	0					
Ineligible	0	0	0	0	0	0	0	0	0	443	559	593	485	437	0	0	0	0						
Psychiatric Inpatient Treatment																								
Graduated	0	0	0	0	0	0	0	0	0	0	0	0	0	0	0	0	0	0	0	0	0	0	0	0
DNF	0	0	0	0	0	0	0	0	0	0	0	0	0	0	0	0	248	0	0	0				
Opted Out	0	0	0	0	0	0	0	0	0	0	0	0	0	0	0	0	0	0	0					
Ineligible	0	0	0	0	0	0	0	0	0	0	0	0	0	0	0	0	0	0	0					

Number of Subjects with Data in Each Subject Group for Each Quarter

Number of Individuals With Medicaid Reimbursement Data By County and Offender Group																								
Quarters From Referral to Drug Court																								
	-12	-11	-10	-9	-8	-7	-6	-5	-4	-3	-2	-1	1	2	3	4	5	6	7	8	9	10	11	12
King County																								
Graduated	209	229	238	259	283	308	313	313	313	313	313	313	313	313	313	313	313	309	300	285	273	255	240	230
DNF	568	621	644	679	725	776	795	795	795	795	795	795	795	795	792	781	766	751	723	701	666	614	577	540
Opted Out	1844	1955	2036	2159	2257	2335	2348	2348	2348	2348	2348	2348	2348	2346	2272	2127	2041	1974	1891	1812	1740	1632	1560	1456
Ineligible	432	439	451	474	490	507	513	513	513	513	513	513	513	510	489	441	394	353	320	279	253	229	211	188
Kitsap County																								
Graduated	6	6	6	6	6	6	6	6	6	6	6	6	6	6	6	6	6	6	3	0	0	0	0	0
DNF	16	16	16	16	16	16	16	16	16	16	16	16	16	16	15	11	9	7	5	0	0	0	0	0
Opted Out	2	2	2	2	2	2	2	2	2	2	2	2	2	2	2	1	1	1	0	0	0	0	0	0
Ineligible	3	3	3	3	3	3	3	3	3	3	3	3	3	3	2	1	1	1	0	0	0	0	0	0
Pierce County																								
Graduated	251	252	257	274	284	285	285	285	285	285	285	285	285	285	285	285	285	282	271	251	237	216	201	171
DNF	433	433	437	455	466	471	471	471	471	471	471	471	471	471	471	451	435	411	402	361	347	324	298	267
Opted Out	215	215	255	349	411	426	426	426	426	426	426	426	426	425	423	409	402	399	393	385	369	353	333	309
Ineligible	278	278	373	582	769	868	868	868	868	868	868	868	868	864	857	833	818	802	784	764	749	739	724	695

Number of Individuals With Medicaid Reimbursement Data
By County and Offender Group (Cont.)

		Quarters From Referral to Drug Court																							
		-12	-11	-10	-9	-8	-7	-6	-5	-4	-3	-2	-1	1	2	3	4	5	6	7	8	9	10	11	12
Skagit County																									
Graduated		30	30	30	30	30	30	30	30	30	30	30	30	30	30	30	30	30	30	26	18	15	11	8	4
DNF		24	24	24	24	24	24	24	24	24	24	24	24	24	24	24	24	22	20	18	15	10	9	6	4
Opted Out		1	1	1	1	1	1	1	1	1	1	1	1	1	1	1	0	0	0	0	0	0	0	0	0
Spokane County																									
Graduated		85	85	85	85	85	85	85	85	85	85	85	85	85	85	85	85	85	85	79	73	69	64	61	51
DNF		118	118	118	118	118	118	118	118	118	118	118	118	118	118	116	114	112	108	104	98	95	85	78	71
Opted Out		482	482	482	482	482	482	482	482	482	482	482	482	482	476	459	425	406	363	340	315	295	269	242	197
Ineligible		1895	1895	1895	1895	1895	1895	1895	1895	1895	1895	1895	1895	1895	1847	1701	1568	1445	1291	1159	1043	942	853	754	645
Thurston County																									
Graduated		33	33	33	33	33	33	33	33	33	33	33	33	33	33	33	33	33	32	27	19	11	5	0	0
DNF		96	96	96	96	96	96	96	96	96	96	96	96	96	96	96	92	86	75	60	45	24	7	0	0
Opted Out		273	273	273	273	273	273	273	273	273	273	273	273	273	273	248	221	184	151	96	62	31	11	0	0
Ineligible		37	37	37	37	37	37	37	37	37	37	37	37	37	37	33	31	29	27	22	14	11	7	0	0