

December, 2014

Risk and Protection Profile for Substance Abuse Prevention in **Yakima County**



4.47-39:2014

Research & Data Analysis Division

Vera Barga, B.S.

Irina V. Sharkova, Ph.D.

David Mancuso, Ph.D.

in conjunction with the

Division of Behavioral Health and Recovery

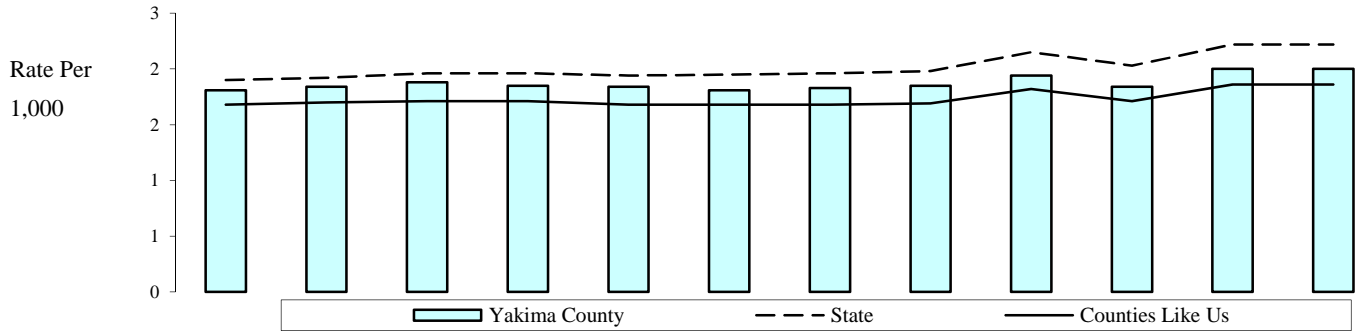
Chris Imhoff, Director



RDA Research & Data
Analysis Division

Community Domain: Availability of Drugs

Alcohol Retail Licenses



	2002	2003	2004	2005	2006	2007	2008	2009	2010	2011	2012	2013*
State	1.9	1.9	2.0	2.0	1.9	2.0	2.0	2.0	2.2	2.0	2.2	2.2
Counties Like Us	1.7	1.7	1.7	1.7	1.7	1.7	1.7	1.7	1.8	1.7	1.9	1.9
Yakima County	1.8	1.8	1.9	1.9	1.8	1.8	1.8	1.9	1.9	1.8	2.0	2.0
Licenses	407	416	427	427	428	427	438	446	473	449	493	493
All Persons	225,045	226,000	227,453	230,419	233,219	236,030	238,927	241,409	243,231	244,681	245,959	245,959

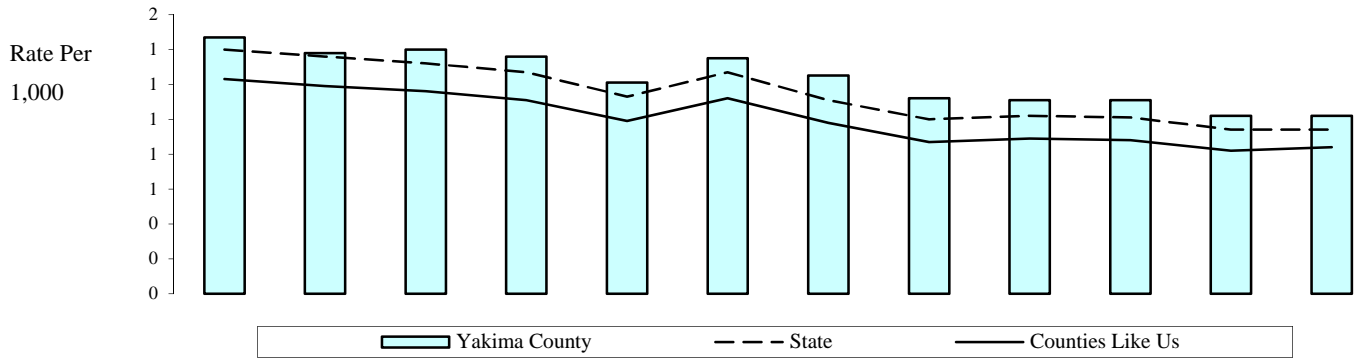
Note: The alcohol retail licenses active during the year, per 1,000 persons (all ages). Retail licenses include restaurants, grocery stores, and wine shops but do not include state liquor stores and agencies. Retail alcohol facilities on military bases and reservations are not licensed by the State and therefore are not included in these data. Policies on licensing distributors, taxing the proceeds, and determining who can sell alcohol vary substantially from state to state. Consequently, there is no consistent comparable source for national data. Data from 1999 to present is now geocoded from the facility address, rather than apportioned from zip code. This results in a more accurate, but different data total per county.

State Source: Washington State Liquor Control Board, Annual Operations Report
Population Estimates: Washington State Department of Health

Updated
 3/24/2014

Community Domain: Availability of Drugs

Tobacco Retail and Vending Machine Licenses



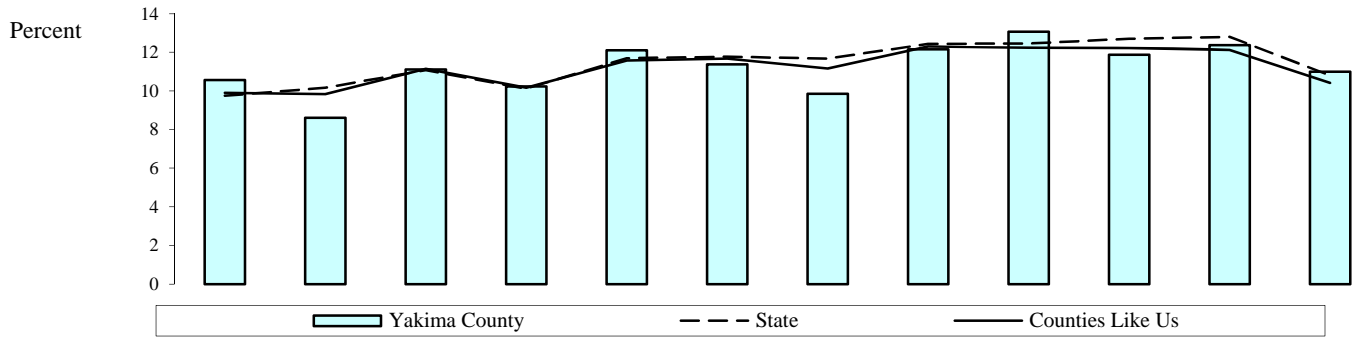
	2002	2003	2004	2005	2006	2007	2008	2009	2010	2011	2012	2013*
State	1.4	1.4	1.3	1.3	1.1	1.3	1.1	1.0	1.0	1.0	0.9	0.9
Counties Like Us	1.2	1.2	1.2	1.1	1.0	1.1	1.0	0.9	0.9	0.9	0.8	0.8
Yakima County	1.5	1.4	1.4	1.4	1.2	1.4	1.3	1.1	1.1	1.1	1.0	1.0
Licenses	331	312	319	313	282	319	299	271	269	271	252	252
All Persons	225,045	226,000	227,453	230,419	233,219	236,030	238,927	241,409	243,231	244,681	245,959	245,959

Note: The tobacco retailer and vending machine licenses active during the year, per 1,000 persons (all ages). Tobacco retailers on military bases and reservations are not licensed by the State and therefore are not included in these data. Tobacco sales licenses include tobacco retailer licenses (stores that sell tobacco products) and tobacco vending machines. No source of comparable national data was obtained.

State Source: Department of Health (from the Department of Licensing), Tobacco Prevention Program, Tobacco Statistics
 Population Estimates: Washington State Department of Health

Updated
 3/24/2014

Alcohol- or Drug-Related Deaths



	2002	2003	2004	2005	2006	2007	2008	2009	2010	2011	2012	2013
--	------	------	------	------	------	------	------	------	------	------	------	------

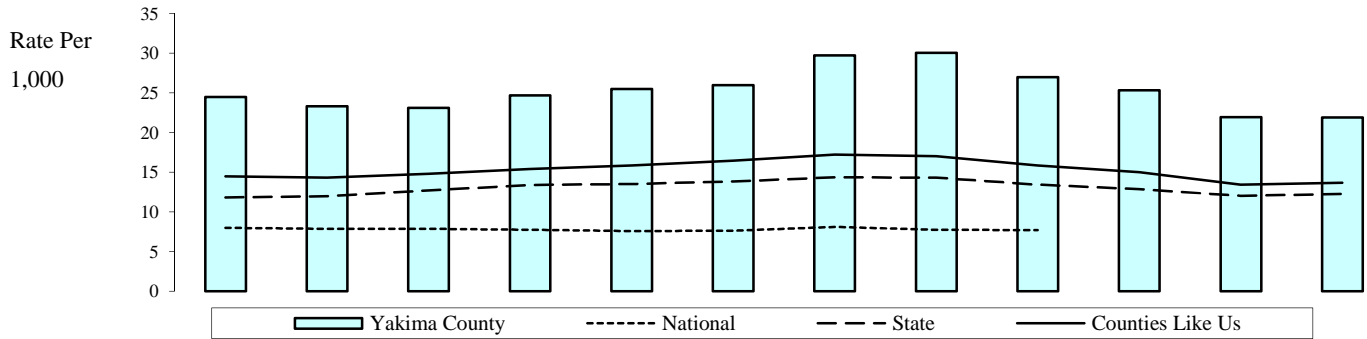
State	9.8	10.2	11.1	10.1	11.7	11.8	11.7	12.4	12.5	12.7	12.8	10.8
Counties Like Us	9.9	9.8	11.1	10.2	11.6	11.7	11.2	12.3	12.2	12.2	12.1	10.4
Yakima County	10.6	8.6	11.1	10.2	12.1	11.4	9.9	12.2	13.1	11.9	12.4	11.0
AOD-related	186	153	190	188	209	199	177	226	233	214	223	206
Deaths	1,759	1,778	1,710	1,836	1,726	1,748	1,796	1,860	1,783	1,802	1,803	1,875

Note: The deaths, with alcohol- or drug-related causes, per 100 deaths. Evaluation is based on all contributory causes of death for direct and indirect associations with alcohol and drug abuse. For a complete explanation of the codes and methods used please see Technical Notes: Counting Alcohol- or Drug-related Deaths. Suppression code definitions for yearly rates are explained in Technical Notes. Rates are not reported when fewer than 100 deaths occurred in an area.

State Source: Department of Health, Center for Health Statistics, Death Certificate Data File

Updated
9/8/2014

Clients of State-Funded Alcohol or Drug Services (Age 18+)



	2002	2003	2004	2005	2006	2007	2008	2009	2010	2011	2012	2013*
National	8.0	7.9	7.9	7.8	7.6	7.7	8.1	7.8	7.7		7.0	
State	11.8	12.0	12.7	13.4	13.5	13.8	14.4	14.3	13.4	12.9	12.0	12.3
Counties Like Us	14.5	14.3	14.8	15.4	15.9	16.5	17.2	17.0	15.8	15.0	13.5	13.7
Yakima County	24.5	23.3	23.1	24.7	25.5	26.0	29.7	30.0	27.0	25.4	22.0	21.9
Admits, 18+	3,790	3,643	3,652	3,924	4,115	4,245	4,927	5,040	4,567	4,325	3,766	3,761
Persons, 18+	154,764	156,234	157,990	159,087	161,299	163,443	165,731	167,791	169,197	170,603	171,585	171,585

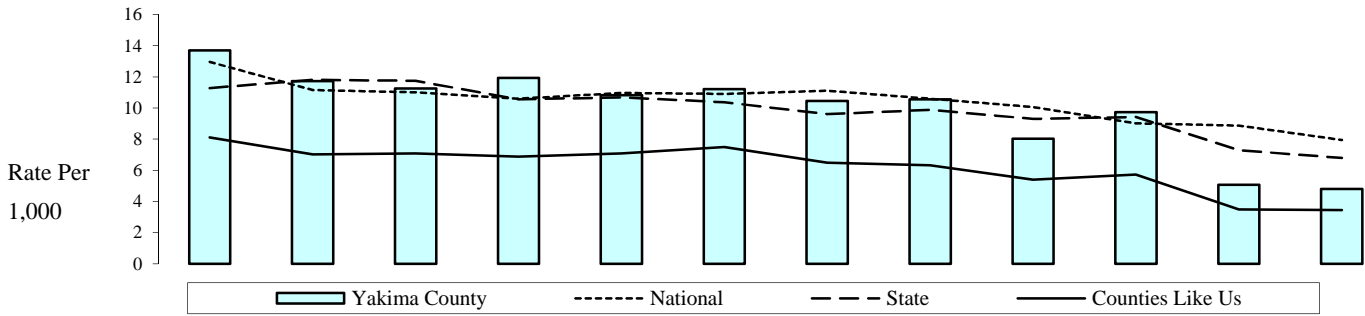
Note: The adults (age 18 and over) receiving state-funded alcohol or drug services, per 1,000 adults. Counts of adults are unduplicated so that those receiving services more than once during the year are only counted once for that year. State-funded services include treatment, assessment, and detox. Persons in Department of Corrections treatment programs are not included.

State Source: Department of Social and Health Services, Division of Behavioral Health and Recovery, Treatment and Assessment Report Generation Tool (TARGET). Population Estimates: Washington State Department of Health

National Source: Office of Applied Studies, Substance Abuse and Mental Health Services Administration, Treatment Episode Data Set (TEDS)

Updated
11/6/2014

Arrests (Age 18+), Alcohol-Related



	2002	2003	2004	2005	2006	2007	2008	2009	2010	2011	2012	2013*
National	13.0	11.2	11.0	10.6	11.0	10.9	11.1	10.6	10.1	9.0	8.9	7.9
State	11.3	11.8	11.8	10.6	10.7	10.4	9.6	9.9	9.3	9.4	7.3	6.8
Counties Like Us	8.1	7.0	7.1	6.9	7.1	7.5	6.5	6.3	5.4	5.7	3.5	3.5
Yakima County	13.7	11.7	11.3	11.9	10.8	11.2	10.5	10.6	8.0	9.7	5.1	4.8
Arrests, 18+	1,963	1,684	1,640	1,758	1,630	1,705	1,622	1,658	1,265	1,382	811	769
Adjusted Pop 18+	143,365	143,702	145,789	147,357	150,712	151,945	155,007	157,006	157,715	141,864	160,269	160,269

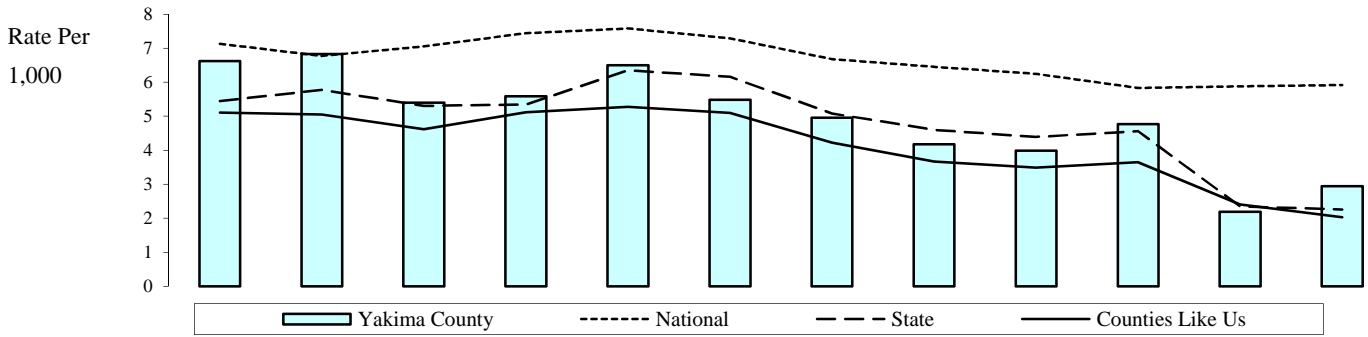
Note: The alcohol violations (age 18+), per 1,000 adults (age 18+). Alcohol violations include all crimes involving driving under the influence, liquor law violations, and drunkenness. DUI arrests by the Washington State Patrol are included in the state trend analysis. However, they are not included in the county rankings since WSP arrests are not assigned to counties. Denominators are adjusted by subtracting the population of police agencies that did not report arrests to UCR. In spite of this population adjustment, when the non-reporting police jurisdiction is where much of the crime occurs, the rate for the county will be lower than it would be if that jurisdiction was included. For percent subtracted, suppression code definitions and the agencies not reporting, see the Technical Notes and the appendix on Non-Reporting Agencies and Population.

State Source: Washington Association of Sheriffs and Police Chiefs, Uniform Crime Report (UCR), Tables 40 and 50.
Population Estimates: Washington State Department of Health

National Source: US Department of Justice, Bureau of Justice Statistics Sourcebook of Criminal Justice Statistics Online

Updated
10/7/2014

Arrests (Age 18+), Drug Law Violation



	2002	2003	2004	2005	2006	2007	2008	2009	2010	2011	2012	2013*
National	7.1	6.8	7.1	7.4	7.6	7.3	6.7	6.5	6.3	5.8	5.9	5.9
State	5.5	5.8	5.3	5.3	6.4	6.2	5.1	4.6	4.4	4.6	2.4	2.3
Counties Like Us	5.1	5.1	4.6	5.1	5.3	5.1	4.2	3.7	3.5	3.7	2.4	2.0
Yakima County	6.6	6.8	5.4	5.6	6.5	5.5	5.0	4.2	4.0	4.8	2.2	2.9
Arrests, 18+	949	982	787	824	980	833	769	656	629	676	351	471
Adjusted Pop 18+	143,365	143,702	145,789	147,357	150,712	151,945	155,007	157,006	157,715	141,864	160,269	160,269

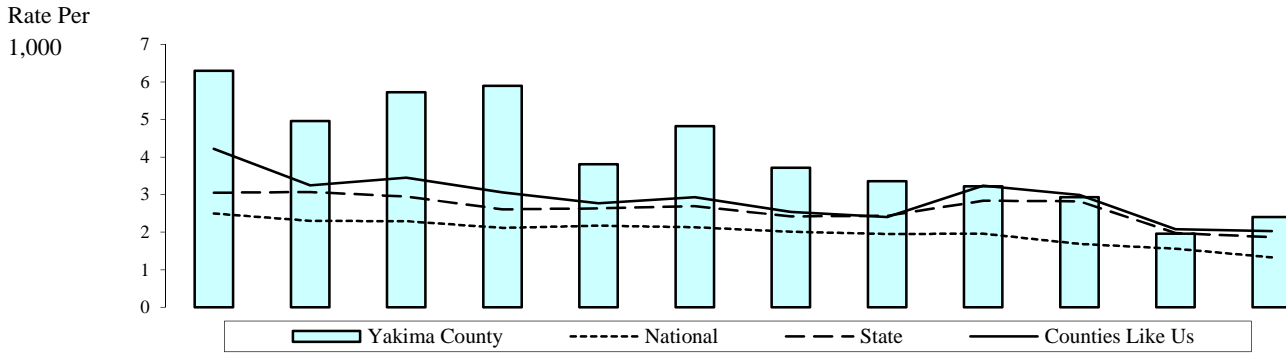
Note: The arrests of adults (age 18+) for drug law violations, per 1,000 adults (age 18+). Drug law violations include all crimes involving sale, manufacturing, and possession of drugs. Denominators are adjusted by subtracting the population of police agencies that did not report arrests to UCR. In spite of this population adjustment, when the non-reporting police jurisdiction is where much of the crime occurs, the rate for the county will be lower than it would be if that jurisdiction was included. For percent subtracted, suppression code definitions and the agencies not reporting, see the Technical Notes and the appendix on Non-Reporting Agencies and Population.

State Source: Washington Association of Sheriffs and Police Chiefs, Uniform Crime Report (UCR), Tables 40 and 50. Population Estimates: Washington State Department of Health

National Source: US Department of Justice, Bureau of Justice Statistics Sourcebook of Criminal Justice Statistics Online

Updated
10/7/2014

Arrests (Age 10-14), Alcohol- or Drug-Related



	2002	2003	2004	2005	2006	2007	2008	2009	2010	2011	2012	2013*
National	2.5	2.3	2.3	2.1	2.2	2.1	2.0	2.0	2.0	1.7	1.6	1.3
State	3.1	3.1	3.0	2.6	2.6	2.7	2.4	2.4	2.8	2.8	2.0	1.9
Counties Like Us	4.2	3.3	3.5	3.1	2.8	2.9	2.5	2.4	3.2	3.0	2.1	2.0
Yakima County	6.3	5.0	5.7	5.9	3.8	4.8	3.7	3.4	3.2	2.9	2.0	2.4
Arrests, 10-14	112	87	100	106	69	86	67	61	58	48	36	44
Adjusted Pop 10-14	17,779	17,551	17,463	17,963	18,108	17,854	18,022	18,160	18,033	16,406	18,333	18,333

Note: The arrests of younger adolescents (age 10-14) for alcohol and drug law violations, per 1,000 adolescents (age 10-14). Alcohol violations include all crimes involving driving under the influence, liquor law violations, and drunkenness. For children, arrests for liquor law violations are usually arrests for minor in possession. Drug law violations include all crimes involving sale, manufacturing, and possession of drugs.

1) Denominators are adjusted by subtracting the population of police agencies that did not report arrests to Uniform Crime Report (UCR). In spite of this population adjustment, when the non-reporting police jurisdiction is where much of the crime occurs, the rate for the county will be lower than it would be if that jurisdiction was included. For percent subtracted, suppression code definitions and the agencies not reporting, see the Technical Notes and the appendix on Non-Reporting Agencies and Population.

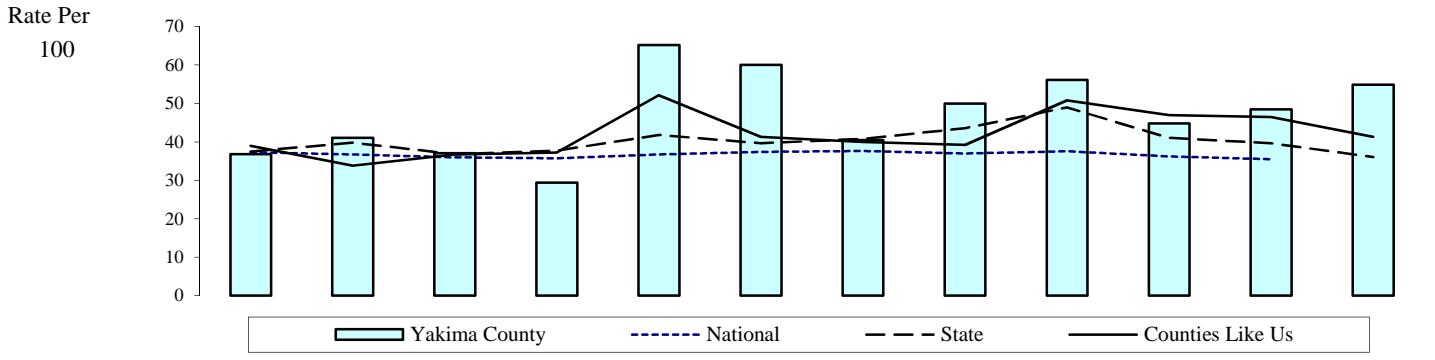
2) The DUI portion of this measure is likely understated, because arrests made by the State Patrol are not attributable to counties. State Patrol arrests are included in the state rates.

State Source: Washington Association of Sheriffs and Police Chiefs, Uniform Crime Report (UCR), Tables 40 and 50. Population Estimates: Washington State Department of Health

National Source: US Department of Justice, Bureau of Justice Statistics Sourcebook of Criminal Justice Statistics Online

Updated
10/7/2014

Alcohol-Related Traffic Fatalities Per All Traffic Fatalities



	2001	2002	2003	2004	2005	2006	2007	2008	2009	2010	2011	2012
National	37.3	36.7	36.0	35.7	36.7	37.4	37.7	37.0	37.6	36.2	35.4	
State	37.4	39.8	36.8	37.7	41.8	39.7	40.8	43.6	49.0	41.1	39.7	36.1
Counties Like Us	39.0	33.8	36.7	37.2	52.2	41.3	40.0	39.3	50.8	47.0	46.4	41.3
Yakima County	36.8	41.0	37.0	29.4	65.2	60.0	40.5	50.0	56.1	44.8	48.5	54.8
Alcohol-related Fatalities	7	16	10	10	30	24	17	12	23	13	16	17
	19	39	27	34	46	40	42	24	41	29	33	31

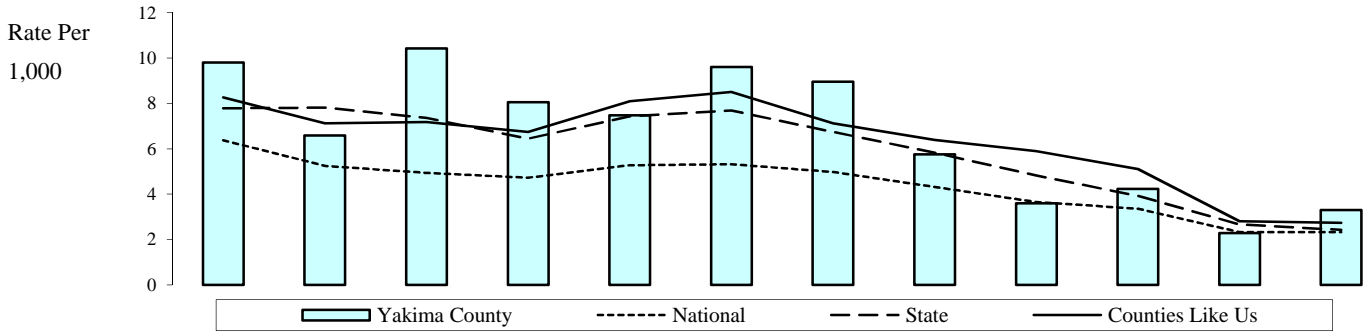
Note: The alcohol-related traffic fatalities, per 100 traffic fatalities. "Alcohol-related" means that the officer on the scene determined that at least one driver involved in the accident "had been drinking." Thus, "Alcohol-related" includes but is not limited to the legal definition of driving under the influence. Care should be taken since small numbers of events can cause unreliable rates in some counties.

State Source: Washington State Patrol, Records Section, Traffic Collisions in Washington State, Accident Records Database

National Source: National Center for Statistics and Analysis, Fatal Accident Reporting System (FARS)

Updated
2/14/2014

Arrests (Age 10-17), Alcohol Violation



	2002	2003	2004	2005	2006	2007	2008	2009	2010	2011	2012	2013*
National	6.4	5.3	4.9	4.7	5.3	5.3	5.0	4.3	3.7	3.4	2.3	2.3
State	7.8	7.8	7.4	6.5	7.4	7.7	6.7	5.8	4.8	3.9	2.7	2.4
Counties Like Us	8.3	7.1	7.2	6.7	8.1	8.5	7.1	6.4	5.9	5.1	2.8	2.7
Yakima County	9.8	6.6	10.4	8.1	7.5	9.6	9.0	5.8	3.6	4.2	2.3	3.3
Arrests, 10-17	277	184	290	233	220	281	265	170	105	109	65	94
Adjusted Pop 10-17	28,266	27,901	27,827	28,899	29,447	29,274	29,571	29,563	29,224	25,778	28,493	28,493

Note: The arrests of adolescents (age 10-17) for alcohol violations, per 1,000 adolescents (age 10-17). Alcohol violations include all crimes involving driving under the influence, liquor law violations, and drunkenness. For children, arrests for liquor law violations are usually arrests for minor in possession.

1) Denominators are adjusted by subtracting the population of police agencies that did not report arrests to UCR. In spite of this population adjustment, when the non-reporting police jurisdiction is where much of the crime occurs, the rate for the county will be lower than it would be if that jurisdiction was included. For percent subtracted, suppression code definitions and the agencies not reporting, see the Technical Notes and the appendix on Non-Reporting Agencies and Population.

2) The DUI portion of this measure is likely understated, because arrests made by the State Patrol are not attributable to counties. State Patrol arrests are included in the state rates.

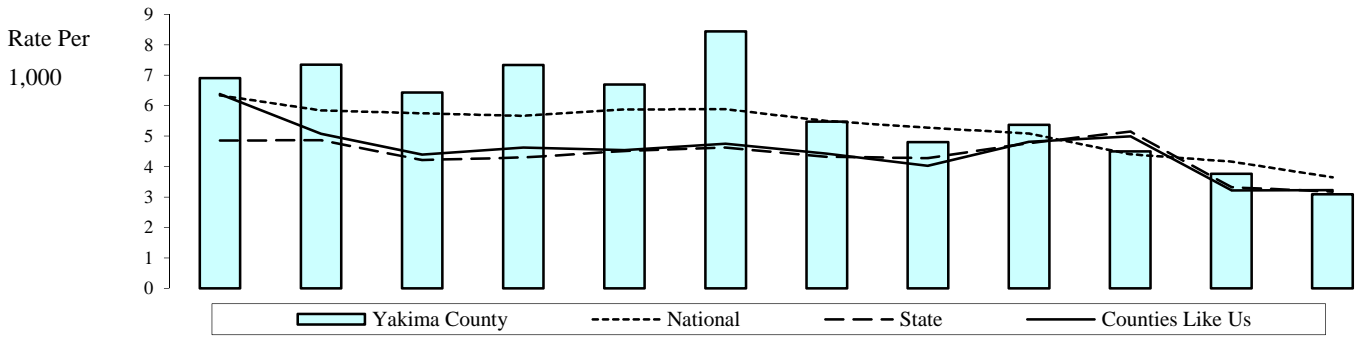
State Source: Washington Association of Sheriffs and Police Chiefs, Uniform Crime Report (UCR), Tables 40 and 50.
Population Estimates: Washington State Department of Health

National Source: US Department of Justice, Bureau of Justice Statistics Sourcebook of Criminal Justice Statistics Online

Updated
10/7/2014

Problem Outcomes: Substance Use

Arrests (Age 10-17), Drug Law Violation



	2002	2003	2004	2005	2006	2007	2008	2009	2010	2011	2012	2013*
National	6.3	5.8	5.8	5.7	5.9	5.9	5.5	5.3	5.1	4.4	4.2	3.7
State	4.9	4.9	4.2	4.3	4.5	4.6	4.3	4.3	4.8	5.2	3.3	3.2
Counties Like Us	6.4	5.1	4.4	4.6	4.5	4.8	4.4	4.0	4.8	5.0	3.2	3.2
Yakima County	6.9	7.4	6.4	7.3	6.7	8.4	5.5	4.8	5.4	4.5	3.8	3.1
Arrests, 10-17	195	205	179	212	197	247	162	142	157	116	107	88
Adjusted Pop 10-17	28,266	27,901	27,827	28,899	29,447	29,274	29,571	29,563	29,224	25,778	28,493	28,493

Note: The arrests of adolescents (age 10-17) for drug law violations, per 1,000 adolescents (age 10-17). Drug law violations include all crimes involving sale, manufacturing, and possession of drugs.

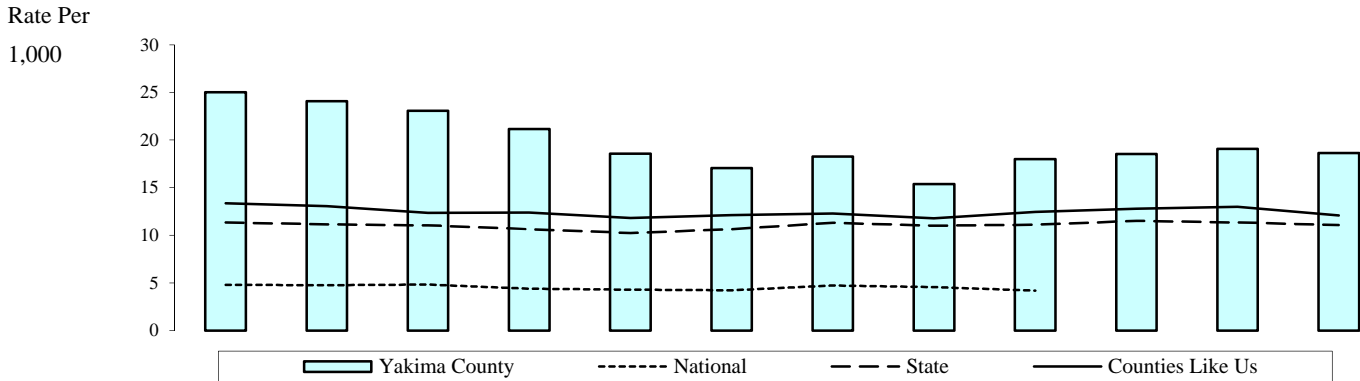
Denominators are adjusted by subtracting the population of police agencies that did not report arrests to UCR. In spite of this population adjustment, when the non-reporting police jurisdiction is where much of the crime occurs, the rate for the county will be lower than it would be if that jurisdiction was included. For percent subtracted, suppression code definitions and the agencies not reporting, see the Technical Notes and the appendix on Non-Reporting Agencies and Population.

State Source: Washington Association of Sheriffs and Police Chiefs, Uniform Crime Report (UCR), Tables 40 and 50.
Population Estimates: Washington State Department of Health

National Source: US Department of Justice, Bureau of Justice Statistics Sourcebook of Criminal Justice Statistics Online

Updated
10/7/2014

Clients of State-Funded Alcohol or Drug Services (Age 10-17)



	2002	2003	2004	2005	2006	2007	2008	2009	2010	2011	2012	2013*
National	4.8	4.8	4.8	4.4	4.3	4.2	4.7	4.6	4.2		3.7	
State	11.4	11.2	11.1	10.6	10.2	10.6	11.3	11.0	11.1	11.5	11.4	11.1
Counties Like Us	13.4	13.1	12.4	12.4	11.8	12.1	12.3	11.8	12.5	12.8	13.0	12.1
Yakima County	25.0	24.1	23.1	21.2	18.6	17.1	18.3	15.4	18.0	18.5	19.1	18.6
Admits, 10-17	782	753	717	675	594	547	585	492	579	579	589	575
Persons, 10-17	31,267	31,256	31,079	31,881	31,998	32,049	32,026	31,969	32,169	31,235	30,865	30,865

Note: The adolescents (age 10-17) receiving state-funded alcohol or drug services, per 1,000 adolescents 10-17. Counts of clients are unduplicated so that those receiving services more than once during the year are only counted once for that year. State-funded services include treatment, assessment, and detox. Persons in Department of Corrections treatment programs are not included.

State Source: Department of Social and Health Services, Division of Behavioral Health and Recovery, Treatment and Assessment Report Generation Tool (TARGET). Population Estimates: Washington State Department of Health

National Source: Office of Applied Studies, Substance Abuse and Mental Health Services Administration, Treatment Episode Data Set (TEDS)

Updated
11/6/2014