

December, 2014

Risk and Protection Profile for Substance Abuse Prevention in Mason County



4.47-23:2014

Research & Data Analysis Division

Vera Barga, B.S.

Irina V. Sharkova, Ph.D.

David Mancuso, Ph.D.

in conjunction with the

Division of Behavioral Health and Recovery

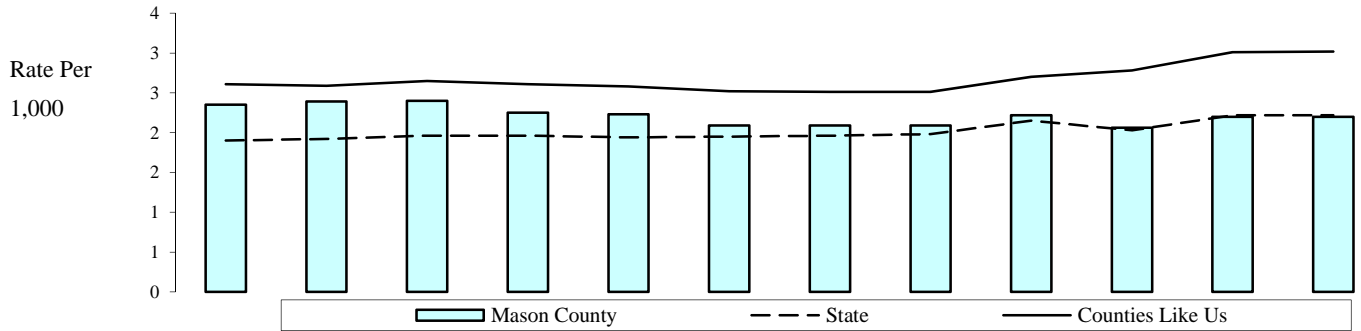
Chris Imhoff, Director



RDA Research & Data
Analysis Division

Community Domain: Availability of Drugs

Alcohol Retail Licenses



	2002	2003	2004	2005	2006	2007	2008	2009	2010	2011	2012	2013*
State	1.9	1.9	2.0	2.0	1.9	2.0	2.0	2.0	2.2	2.0	2.2	2.2
Counties Like Us	2.6	2.6	2.7	2.6	2.6	2.5	2.5	2.5	2.7	2.8	3.0	3.0
Mason County	2.4	2.4	2.4	2.3	2.2	2.1	2.1	2.1	2.2	2.1	2.2	2.2
Licenses	117	120	122	123	125	121	124	126	135	126	135	135
All Persons	49,799	50,200	50,800	54,551	56,063	57,951	59,459	60,199	60,699	61,096	61,444	61,444

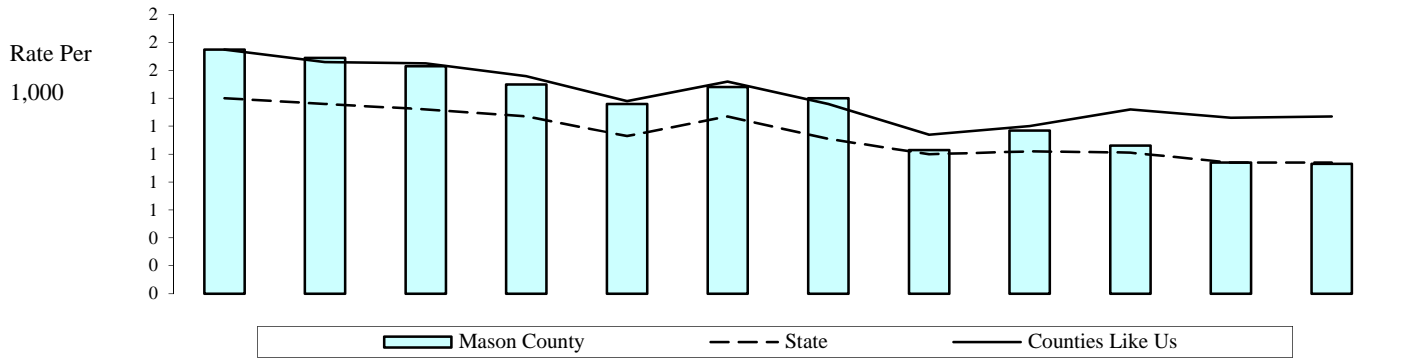
Note: The alcohol retail licenses active during the year, per 1,000 persons (all ages). Retail licenses include restaurants, grocery stores, and wine shops but do not include state liquor stores and agencies. Retail alcohol facilities on military bases and reservations are not licensed by the State and therefore are not included in these data. Policies on licensing distributors, taxing the proceeds, and determining who can sell alcohol vary substantially from state to state. Consequently, there is no consistent comparable source for national data. Data from 1999 to present is now geocoded from the facility address, rather than apportioned from zip code. This results in a more accurate, but different data total per county.

State Source: Washington State Liquor Control Board, Annual Operations Report
Population Estimates: Washington State Department of Health

Updated
 3/24/2014

Community Domain: Availability of Drugs

Tobacco Retail and Vending Machine Licenses



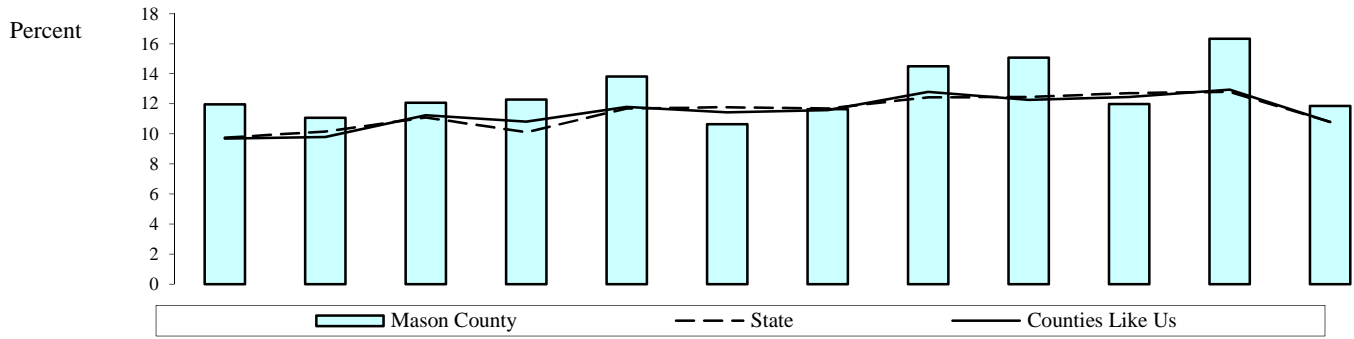
	2002	2003	2004	2005	2006	2007	2008	2009	2010	2011	2012	2013*
State	1.4	1.4	1.3	1.3	1.1	1.3	1.1	1.0	1.0	1.0	0.9	0.9
Counties Like Us	1.8	1.7	1.7	1.6	1.4	1.5	1.4	1.1	1.2	1.3	1.3	1.3
Mason County	1.8	1.7	1.6	1.5	1.4	1.5	1.4	1.0	1.2	1.1	0.9	0.9
Licenses	87	85	83	82	76	86	83	62	71	65	58	57
All Persons	49,799	50,200	50,800	54,551	56,063	57,951	59,459	60,199	60,699	61,096	61,444	61,444

Note: The tobacco retailer and vending machine licenses active during the year, per 1,000 persons (all ages). Tobacco retailers on military bases and reservations are not licensed by the State and therefore are not included in these data. Tobacco sales licenses include tobacco retailer licenses (stores that sell tobacco products) and tobacco vending machines. No source of comparable national data was obtained.

State Source: Department of Health (from the Department of Licensing), Tobacco Prevention Program, Tobacco Statistics
Population Estimates: Washington State Department of Health

Updated
3/24/2014

Alcohol- or Drug-Related Deaths



	2002	2003	2004	2005	2006	2007	2008	2009	2010	2011	2012	2013
--	------	------	------	------	------	------	------	------	------	------	------	------

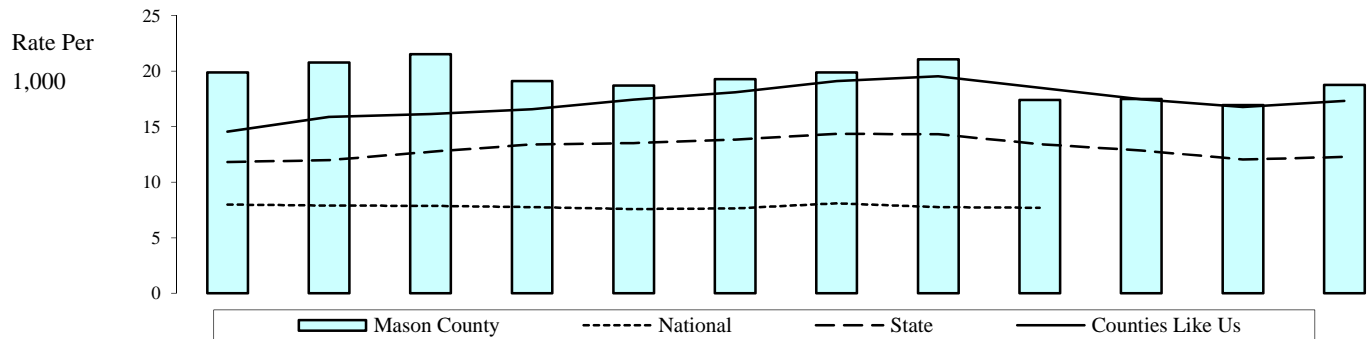
State	9.8	10.2	11.1	10.1	11.7	11.8	11.7	12.4	12.5	12.7	12.8	10.8
Counties Like Us	9.7	9.8	11.2	10.8	11.8	11.4	11.6	12.8	12.3	12.5	13.0	10.8
Mason County	12.0	11.1	12.1	12.3	13.8	10.7	11.7	14.5	15.1	12.0	16.3	11.9
AOD-related	57	59	65	72	81	64	67	80	87	74	99	77
Deaths	476	533	539	586	586	601	575	552	577	617	606	649

Note: The deaths, with alcohol- or drug-related causes, per 100 deaths. Evaluation is based on all contributory causes of death for direct and indirect associations with alcohol and drug abuse. For a complete explanation of the codes and methods used please see Technical Notes: Counting Alcohol- or Drug-related Deaths. Suppression code definitions for yearly rates are explained in Technical Notes. Rates are not reported when fewer than 100 deaths occurred in an area.

State Source: Department of Health, Center for Health Statistics, Death Certificate Data File

Updated
9/8/2014

Clients of State-Funded Alcohol or Drug Services (Age 18+)



	2002	2003	2004	2005	2006	2007	2008	2009	2010	2011	2012	2013*
National	8.0	7.9	7.9	7.8	7.6	7.7	8.1	7.8	7.7		7.0	
State	11.8	12.0	12.7	13.4	13.5	13.8	14.4	14.3	13.4	12.9	12.0	12.3
Counties Like Us	14.6	15.9	16.1	16.6	17.4	18.1	19.1	19.5	18.5	17.5	16.8	17.3
Mason County	19.9	20.8	21.5	19.1	18.7	19.3	19.9	21.1	17.4	17.5	16.9	18.8
Admits, 18+	762	806	848	814	823	880	935	1,006	841	855	834	924
Persons, 18+	38,344	38,813	39,426	42,643	44,007	45,647	47,010	47,791	48,322	48,896	49,247	49,247

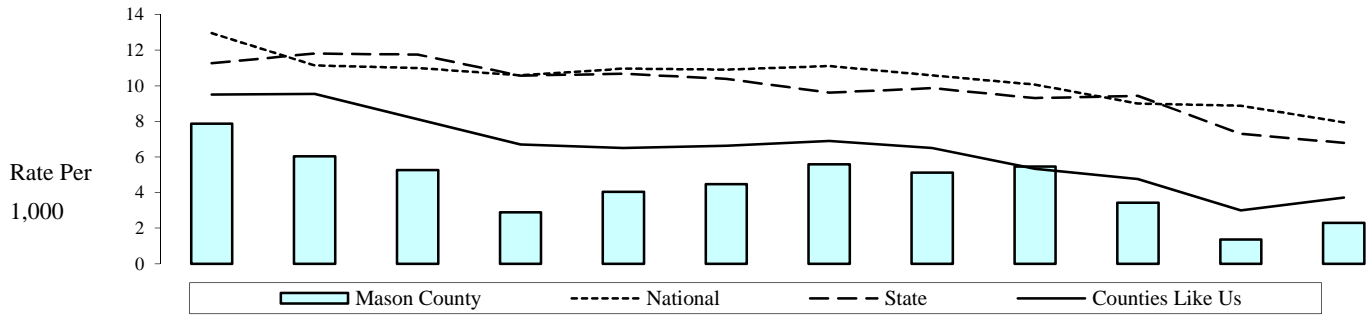
Note: The adults (age 18 and over) receiving state-funded alcohol or drug services, per 1,000 adults. Counts of adults are unduplicated so that those receiving services more than once during the year are only counted once for that year. State-funded services include treatment, assessment, and detox. Persons in Department of Corrections treatment programs are not included.

State Source: Department of Social and Health Services, Division of Behavioral Health and Recovery, Treatment and Assessment Report Generation Tool (TARGET). Population Estimates: Washington State Department of Health

National Source: Office of Applied Studies, Substance Abuse and Mental Health Services Administration, Treatment Episode Data Set (TEDS)

Updated
11/6/2014

Arrests (Age 18+), Alcohol-Related



	2002	2003	2004	2005	2006	2007	2008	2009	2010	2011	2012	2013*
National	13.0	11.2	11.0	10.6	11.0	10.9	11.1	10.6	10.1	9.0	8.9	7.9
State	11.3	11.8	11.8	10.6	10.7	10.4	9.6	9.9	9.3	9.4	7.3	6.8
Counties Like Us	9.5	9.5	8.1	6.7	6.5	6.6	6.9	6.5	5.3	4.8	3.0	3.7
Mason County	7.9	6.0	5.3	2.9	4.0	4.5	5.6	5.1	5.5	3.4	1.4	2.3
Arrests, 18+	298	228	205	122	176	202	260	242	260	130	66	111
Adjusted Pop 18+	37,879	37,823	38,958	42,160	43,518	45,153	46,515	47,294	47,609	37,965	48,546	48,546

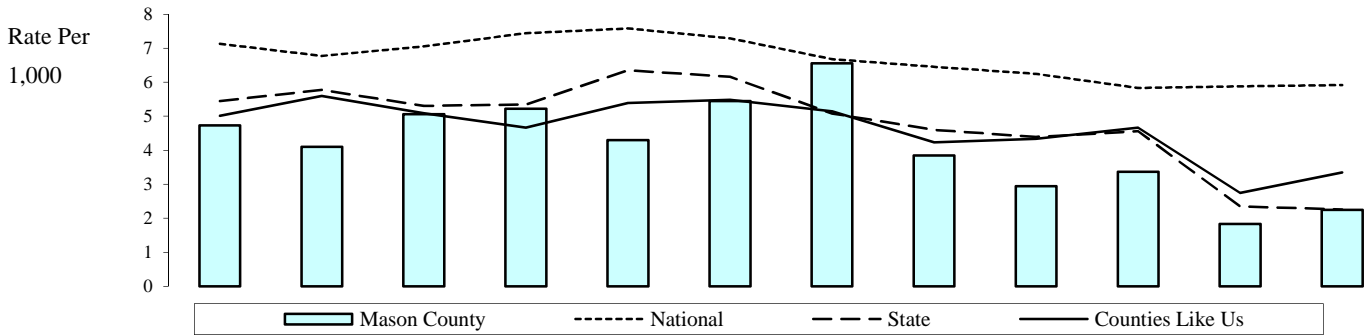
Note: The alcohol violations (age 18+), per 1,000 adults (age 18+). Alcohol violations include all crimes involving driving under the influence, liquor law violations, and drunkenness. DUI arrests by the Washington State Patrol are included in the state trend analysis. However, they are not included in the county rankings since WSP arrests are not assigned to counties. Denominators are adjusted by subtracting the population of police agencies that did not report arrests to UCR. In spite of this population adjustment, when the non-reporting police jurisdiction is where much of the crime occurs, the rate for the county will be lower than it would be if that jurisdiction was included. For percent subtracted, suppression code definitions and the agencies not reporting, see the Technical Notes and the appendix on Non-Reporting Agencies and Population.

State Source: Washington Association of Sheriffs and Police Chiefs, Uniform Crime Report (UCR), Tables 40 and 50.
Population Estimates: Washington State Department of Health

National Source: US Department of Justice, Bureau of Justice Statistics Sourcebook of Criminal Justice Statistics Online

Updated
10/7/2014

Arrests (Age 18+), Drug Law Violation



	2002	2003	2004	2005	2006	2007	2008	2009	2010	2011	2012	2013*
National	7.1	6.8	7.1	7.4	7.6	7.3	6.7	6.5	6.3	5.8	5.9	5.9
State	5.5	5.8	5.3	5.3	6.4	6.2	5.1	4.6	4.4	4.6	2.4	2.3
Counties Like Us	5.0	5.6	5.1	4.7	5.4	5.5	5.2	4.2	4.3	4.7	2.8	3.4
Mason County	4.7	4.1	5.1	5.2	4.3	5.5	6.6	3.9	2.9	3.4	1.8	2.3
Arrests, 18+	179	155	197	220	187	246	305	182	140	128	89	109
Adjusted Pop 18+	37,879	37,823	38,958	42,160	43,518	45,153	46,515	47,294	47,609	37,965	48,546	48,546

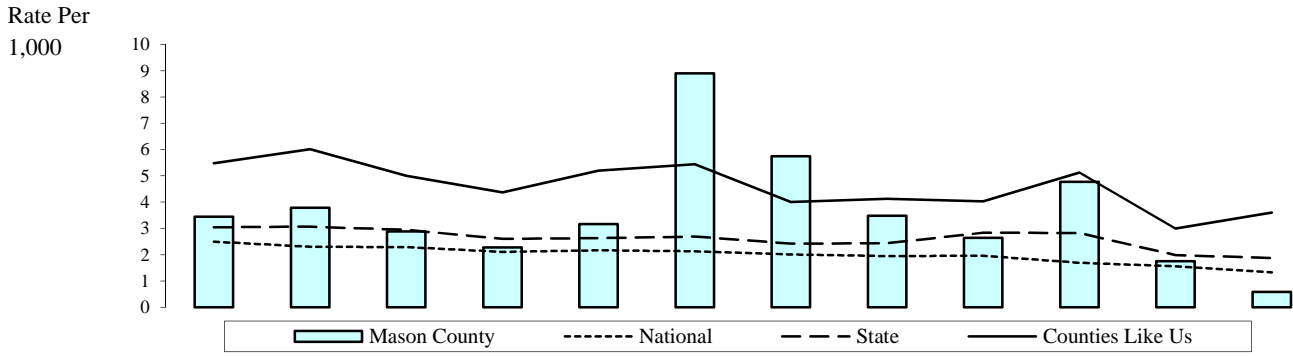
Note: The arrests of adults (age 18+) for drug law violations, per 1,000 adults (age 18+). Drug law violations include all crimes involving sale, manufacturing, and possession of drugs. Denominators are adjusted by subtracting the population of police agencies that did not report arrests to UCR. In spite of this population adjustment, when the non-reporting police jurisdiction is where much of the crime occurs, the rate for the county will be lower than it would be if that jurisdiction was included. For percent subtracted, suppression code definitions and the agencies not reporting, see the Technical Notes and the appendix on Non-Reporting Agencies and Population.

State Source: Washington Association of Sheriffs and Police Chiefs, Uniform Crime Report (UCR), Tables 40 and 50. Population Estimates: Washington State Department of Health

National Source: US Department of Justice, Bureau of Justice Statistics Sourcebook of Criminal Justice Statistics Online

Updated
10/7/2014

Arrests (Age 10-14), Alcohol- or Drug-Related



	2002	2003	2004	2005	2006	2007	2008	2009	2010	2011	2012	2013*
National	2.5	2.3	2.3	2.1	2.2	2.1	2.0	2.0	2.0	1.7	1.6	1.3
State	3.1	3.1	3.0	2.6	2.6	2.7	2.4	2.4	2.8	2.8	2.0	1.9
Counties Like Us	5.5	6.0	5.0	4.4	5.2	5.4	4.0	4.1	4.0	5.1	3.0	3.6
Mason County	3.4	3.8	2.9	2.3	3.2	8.9	5.8	3.5	2.6	4.8	1.8	0.6
Arrests, 10-14	12	13	10	8	11	31	20	12	9	13	6	2
Adjusted Pop 10-14	3,486	3,430	3,468	3,506	3,479	3,482	3,476	3,445	3,403	2,726	3,421	3,421

Note: The arrests of younger adolescents (age 10-14) for alcohol and drug law violations, per 1,000 adolescents (age 10-14). Alcohol violations include all crimes involving driving under the influence, liquor law violations, and drunkenness. For children, arrests for liquor law violations are usually arrests for minor in possession. Drug law violations include all crimes involving sale, manufacturing, and possession of drugs.

1) Denominators are adjusted by subtracting the population of police agencies that did not report arrests to Uniform Crime Report (UCR). In spite of this population adjustment, when the non-reporting police jurisdiction is where much of the crime occurs, the rate for the county will be lower than it would be if that jurisdiction was included. For percent subtracted, suppression code definitions and the agencies not reporting, see the Technical Notes and the appendix on Non-Reporting Agencies and Population.

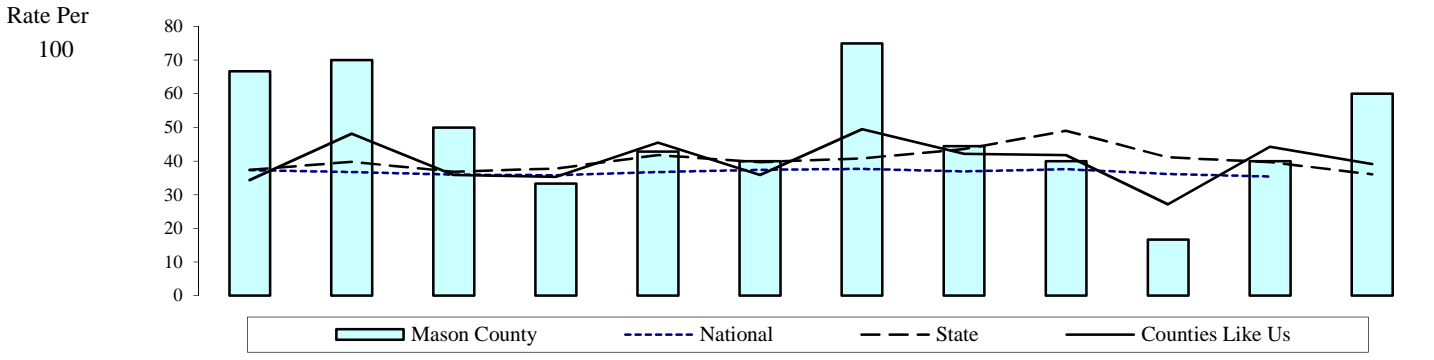
2) The DUI portion of this measure is likely understated, because arrests made by the State Patrol are not attributable to counties. State Patrol arrests are included in the state rates.

State Source: Washington Association of Sheriffs and Police Chiefs, Uniform Crime Report (UCR), Tables 40 and 50. Population Estimates: Washington State Department of Health

National Source: US Department of Justice, Bureau of Justice Statistics Sourcebook of Criminal Justice Statistics Online

Updated
10/7/2014

Alcohol-Related Traffic Fatalities Per All Traffic Fatalities



	2001	2002	2003	2004	2005	2006	2007	2008	2009	2010	2011	2012
National	37.3	36.7	36.0	35.7	36.7	37.4	37.7	37.0	37.6	36.2	35.4	
State	37.4	39.8	36.8	37.7	41.8	39.7	40.8	43.6	49.0	41.1	39.7	36.1
Counties Like Us	34.4	48.1	35.9	35.4	45.5	35.9	49.5	42.2	41.8	27.1	44.3	39.1
Mason County	66.7	70.0	50.0	33.3	42.9	40.0	75.0	44.4	40.0	16.7	40.0	60.0
Alcohol-related	8	7	6	4	6	6	6	4	2	1	4	3
Fatalities	12	10	12	12	14	15	8	9	5	6	10	5

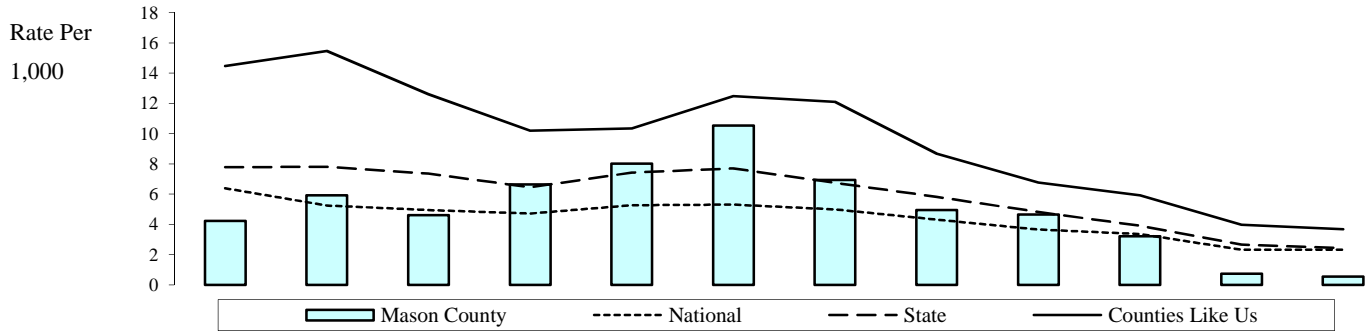
Note: The alcohol-related traffic fatalities, per 100 traffic fatalities. "Alcohol-related" means that the officer on the scene determined that at least one driver involved in the accident "had been drinking." Thus, "Alcohol-related" includes but is not limited to the legal definition of driving under the influence. Care should be taken since small numbers of events can cause unreliable rates in some counties.

State Source: Washington State Patrol, Records Section, Traffic Collisions in Washington State, Accident Records Database

National Source: National Center for Statistics and Analysis, Fatal Accident Reporting System (FARS)

Updated
2/14/2014

Arrests (Age 10-17), Alcohol Violation



	2002	2003	2004	2005	2006	2007	2008	2009	2010	2011	2012	2013*
National	6.4	5.3	4.9	4.7	5.3	5.3	5.0	4.3	3.7	3.4	2.3	2.3
State	7.8	7.8	7.4	6.5	7.4	7.7	6.7	5.8	4.8	3.9	2.7	2.4
Counties Like Us	14.5	15.5	12.6	10.2	10.4	12.5	12.1	8.7	6.8	5.9	4.0	3.7
Mason County	4.2	5.9	4.6	6.6	8.0	10.5	6.9	4.9	4.7	3.2	0.7	0.6
Arrests, 10-17	24	33	26	38	46	61	40	28	26	14	4	3
Adjusted Pop 10-17	5,669	5,578	5,654	5,727	5,743	5,793	5,771	5,673	5,579	4,362	5,478	5,478

Note: The arrests of adolescents (age 10-17) for alcohol violations, per 1,000 adolescents (age 10-17). Alcohol violations include all crimes involving driving under the influence, liquor law violations, and drunkenness. For children, arrests for liquor law violations are usually arrests for minor in possession.

1) Denominators are adjusted by subtracting the population of police agencies that did not report arrests to UCR. In spite of this population adjustment, when the non-reporting police jurisdiction is where much of the crime occurs, the rate for the county will be lower than it would be if that jurisdiction was included. For percent subtracted, suppression code definitions and the agencies not reporting, see the Technical Notes and the appendix on Non-Reporting Agencies and Population.

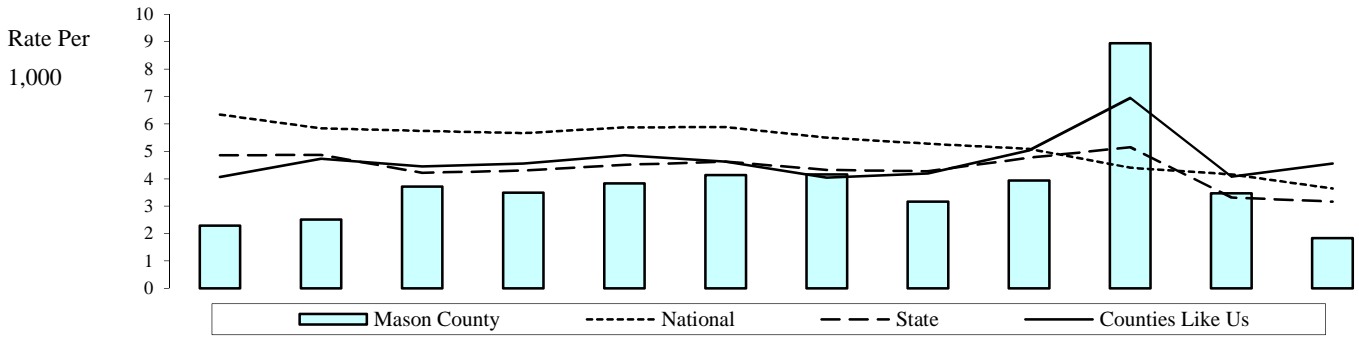
2) The DUI portion of this measure is likely understated, because arrests made by the State Patrol are not attributable to counties. State Patrol arrests are included in the state rates.

State Source: Washington Association of Sheriffs and Police Chiefs, Uniform Crime Report (UCR), Tables 40 and 50.
 Population Estimates: Washington State Department of Health

National Source: US Department of Justice, Bureau of Justice Statistics Sourcebook of Criminal Justice Statistics Online

Updated
 10/7/2014

Arrests (Age 10-17), Drug Law Violation



	2002	2003	2004	2005	2006	2007	2008	2009	2010	2011	2012	2013*
National	6.3	5.8	5.8	5.7	5.9	5.9	5.5	5.3	5.1	4.4	4.2	3.7
State	4.9	4.9	4.2	4.3	4.5	4.6	4.3	4.3	4.8	5.2	3.3	3.2
Counties Like Us	4.1	4.7	4.5	4.6	4.9	4.6	4.0	4.2	5.0	7.0	4.1	4.6
Mason County	2.3	2.5	3.7	3.5	3.8	4.1	4.2	3.2	3.9	8.9	3.5	1.8
Arrests, 10-17	13	14	21	20	22	24	24	18	22	39	19	10
Adjusted Pop 10-17	5,669	5,578	5,654	5,727	5,743	5,793	5,771	5,673	5,579	4,362	5,478	5,478

Note: The arrests of adolescents (age 10-17) for drug law violations, per 1,000 adolescents (age 10-17). Drug law violations include all crimes involving sale, manufacturing, and possession of drugs.

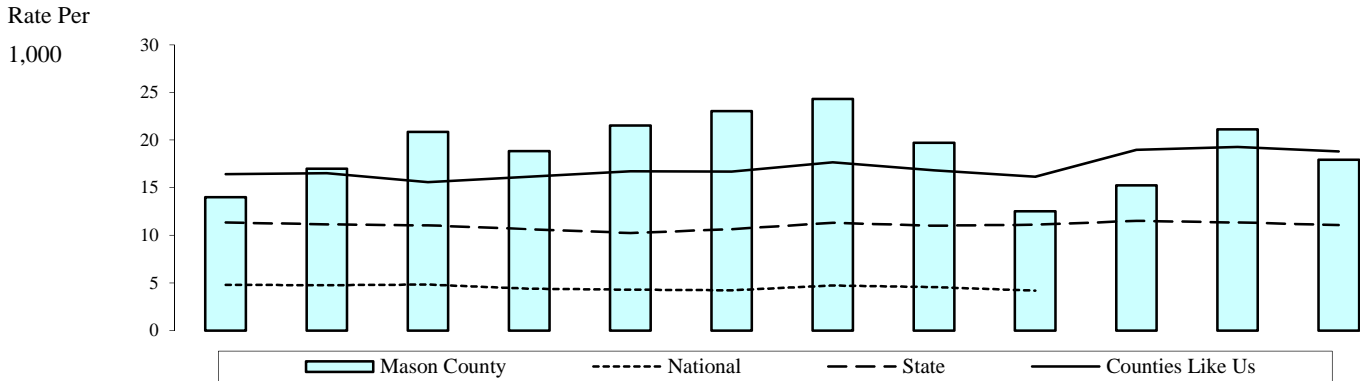
Denominators are adjusted by subtracting the population of police agencies that did not report arrests to UCR. In spite of this population adjustment, when the non-reporting police jurisdiction is where much of the crime occurs, the rate for the county will be lower than it would be if that jurisdiction was included. For percent subtracted, suppression code definitions and the agencies not reporting, see the Technical Notes and the appendix on Non-Reporting Agencies and Population.

State Source: Washington Association of Sheriffs and Police Chiefs, Uniform Crime Report (UCR), Tables 40 and 50.
 Population Estimates: Washington State Department of Health

National Source: US Department of Justice, Bureau of Justice Statistics Sourcebook of Criminal Justice Statistics Online

Updated
 10/7/2014

Clients of State-Funded Alcohol or Drug Services (Age 10-17)



	2002	2003	2004	2005	2006	2007	2008	2009	2010	2011	2012	2013*
National	4.8	4.8	4.8	4.4	4.3	4.2	4.7	4.6	4.2		3.7	
State	11.4	11.2	11.1	10.6	10.2	10.6	11.3	11.0	11.1	11.5	11.4	11.1
Counties Like Us	16.4	16.5	15.6	16.2	16.7	16.7	17.7	16.8	16.2	19.0	19.3	18.8
Mason County	14.0	17.0	20.8	18.9	21.5	23.0	24.3	19.7	12.5	15.3	21.1	17.9
Admits, 10-17	81	98	120	110	126	136	143	114	72	86	119	101
Persons, 10-17	5,776	5,770	5,758	5,837	5,854	5,905	5,881	5,782	5,742	5,639	5,636	5,636

Note: The adolescents (age 10-17) receiving state-funded alcohol or drug services, per 1,000 adolescents 10-17. Counts of clients are unduplicated so that those receiving services more than once during the year are only counted once for that year. State-funded services include treatment, assessment, and detox. Persons in Department of Corrections treatment programs are not included.

State Source: Department of Social and Health Services, Division of Behavioral Health and Recovery, Treatment and Assessment Report Generation Tool (TARGET). Population Estimates: Washington State Department of Health

National Source: Office of Applied Studies, Substance Abuse and Mental Health Services Administration, Treatment Episode Data Set (TEDS)

Updated
11/6/2014